

## [KD Validated] Anti-ARHGEF2 Rabbit pAb

Purified Rabbit Polyclonal Antibody

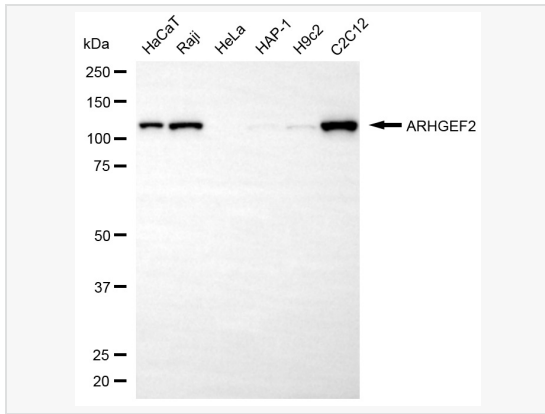
Catalog # P020518

### Product Information

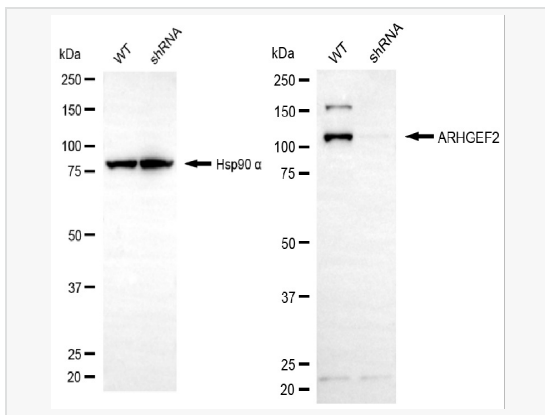
Application	WB
Reactivity	Human, Mouse, Rat
Dilution	WB 1:500~1:2,500
Host	Rabbit
Clonality	Polyclonal
Isotype	IgG
Label	Unconjugated
Immunogen	A synthesized peptide derived from human GEF HI
Format	Affinity purified polyclonal antibody supplied in PBS with 0.02% sodium azide and 50% glycerol, pH 7.3.
Storage	Shipped on wet ice. Store at -20°C. Stable for 12 months from date of receipt. Aliquoting is unnecessary for -20°C storage.
Precautions	[KD Validated] Anti-ARHGEF2 Rabbit pAb is for research use only and not for use in diagnostic or therapeutic procedures.

### Protein Information

Synonyms	ARHGEF2; Rho/Rac Guanine Nucleotide Exchange Factor 2; GEF-H1; LFP40; KIAA0651; GEFH1; P40; Lfc; Rho/Rac Guanine Nucleotide Exchange Factor (GEF) 2; Rho Guanine Nucleotide Exchange Factor 2; Proliferating Cell Nucleolar Antigen P40; Guanine Nucleotide Exchange Factor HI; Microtubule-Regulated Rho-GEF; NEDMHM; GEF.
Calculated MW	Calculated MW: 112 kDa; Observed MW: 120 kDa
Uniprot ID	Q92974
Gene ID	9181
Background	Rho GTPases play a fundamental role in numerous cellular processes that are initiated by extracellular stimuli that work through G protein coupled receptors. The encoded protein may form complex with G proteins and stimulate rho-dependent signals. Alternatively spliced transcript variants encoding different isoforms have been identified.[provided by RefSeq, Jun 2009].
Cellular Location	Cytoplasm. Cell junction > tight junction. Golgi apparatus. Cytoplasm > cytoskeleton > spindle. Cell projection > ruffle membrane. Localizes to the tips of cortical microtubules of the mitotic spindle during cell division, and is further released upon microtubule depolymerization. Recruited into membrane ruffles induced by <i>S.flexneri</i> at tight junctions of polarized epithelial cells.



Western blotting analysis using ARHGEF2 antibody (P020518). Total cell lysates (30  $\mu$ g) from various cell lines were loaded and separated by SDS-PAGE. The blot was incubated with ARHGEF2 antibody (P020518, 1:2,500) and HRP-conjugated goat anti-rabbit secondary antibody (1:20,000) respectively. Image was developed using ECL Substrate Kit.



Western blotting analysis using ARHGEF2 antibody (P020518). ARHGEF2 expression in wild-type (WT) and ARHGEF2 shRNA knockdown (KD) HeLa cells with 30  $\mu$ g of total cell lysates. Hsp90  $\alpha$  serves as a loading control. The blot was incubated with ARHGEF2 antibody (P020518, 1:2,500) and HRP-conjugated goat anti-rabbit secondary antibody (1:20,000) respectively. Image was developed using ECL Substrate Kit.