

[KD Validated] Anti-ATG5 Rabbit pAb

Purified Rabbit Polyclonal Antibody

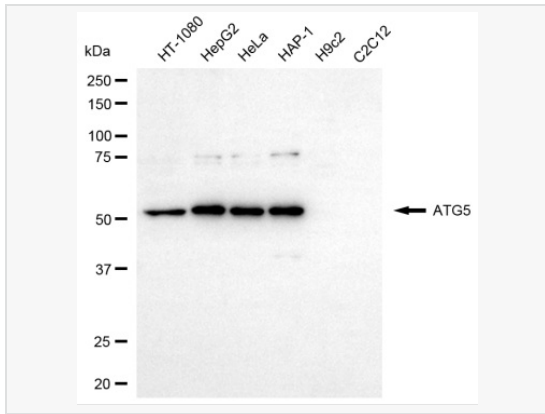
Catalog # P020515

Product Information

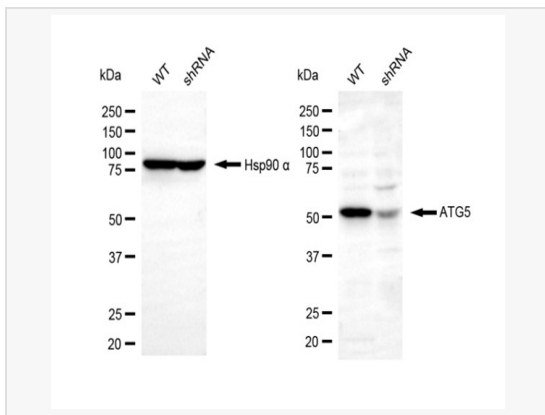
Application	WB
Reactivity	Human
Dilution	WB 1:200~1:1,000
Host	Rabbit
Clonality	Polyclonal
Isotype	IgG
Label	Unconjugated
Immunogen	A synthesized peptide derived from human ATG5
Format	Affinity purified polyclonal antibody supplied in PBS with 0.02% sodium azide and 50% glycerol, pH 7.3.
Storage	Shipped on wet ice. Store at -20°C. Stable for 12 months from date of receipt. Aliquoting is unnecessary for -20°C storage.
Precautions	[KD Validated] Anti-ATG5 Rabbit pAb is for research use only and not for use in diagnostic or therapeutic procedures.

Protein Information

Synonyms	ATG5; Autophagy Related 5; ASP; HAPG5; APG5L; APG5; Apoptosis-Specific Protein; Autophagy Protein 5; ATG5 Autophagy Related 5 Homolog (S. Cerevisiae); APG5 (Autophagy 5, S. Cerevisiae)-Like; APG5 Autophagy 5-Like (S. Cerevisiae); ATG5 Autophagy Related 5 Homolog; APG5 Autophagy 5-Like; APG5-LIKE; APG5-Like; SCAR25.
Calculated MW	Calculated MW: 32 kDa; Observed MW: 55 kDa
Uniprot ID	Q9HIY0
Gene ID	9474
Background	Required for autophagy. Conjugates to ATG12 and associates with isolation membrane to form cup-shaped isolation membrane and autophagosome. Involved in mitochondrial quality control after oxidative damage, and in subsequent cellular longevity.



Western blotting analysis using ATG5 antibody (P020515). Total cell lysates (30 μ g) from various cell lines were loaded and separated by SDS-PAGE. The blot was incubated with ATG5 antibody (P020515, 1:1,000) and HRP-conjugated goat anti-rabbit secondary antibody (1:20,000) respectively. Image was developed using ECL Substrate Kit.



Western blotting analysis using ATG5 antibody (P020515). ATG5 expression in wild-type (WT) and ATG5 shRNA knockdown (KD) HeLa cells with 30 μ g of total cell lysates. Hsp90 α serves as a loading control. The blot was incubated with ATG5 antibody (P020515, 1:1,000) and HRP-conjugated goat anti-rabbit secondary antibody (1:20,000) respectively. Image was developed using ECL Substrate Kit.