

[KD Validated] Anti-CSNK1A1 Rabbit mAb

Purified Recombinant Rabbit Monoclonal Antibody

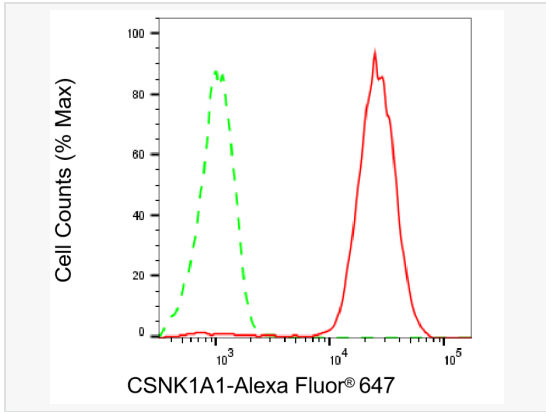
Catalog # R020472

Product Information

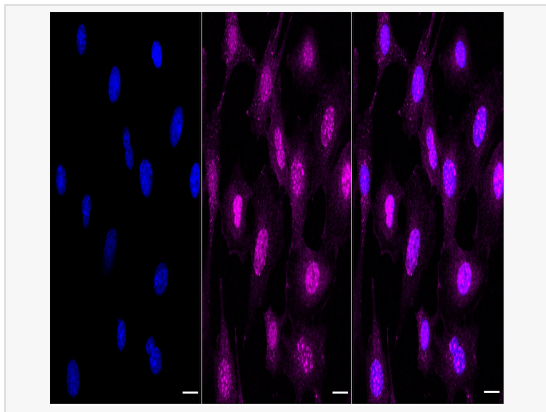
Application	WB, FC, IF (Cell)/ICC
Reactivity	Human, Mouse, Rat
Dilution	WB 1:1,000~1:5,000; FC 1:100~1:1,000; IF 1:100~1:1,000
Host	Rabbit
Clonality	Monoclonal
Clone No.	97R45O53
Isotype	IgG
Label	Unconjugated
Immunogen	A synthesized peptide derived from human Casein Kinase 1 alpha
Format	Affinity purified monoclonal antibody supplied in PBS with 0.02% sodium azide and 50% glycerol, pH 7.3.
Storage	Shipped on wet ice. Store at -20°C. Stable for 12 months from date of receipt. Aliquoting is unnecessary for -20°C storage.
Precautions	[KD Validated] Anti-CSNK1A1 Rabbit mAb [97R45O53] is for research use only and not for use in diagnostic or therapeutic procedures.

Protein Information

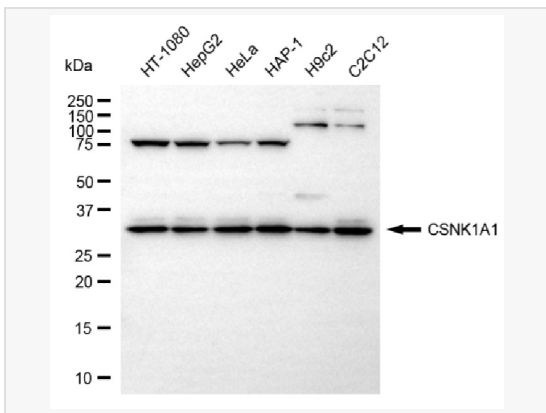
Synonyms	CSNK1A1; Casein Kinase 1 Alpha 1; CK1; CK1a; CK1a; Casein Kinase I Isoform Alpha; Clock Regulator Kinase; EC 2.7.11.1; CKI-Alpha; CK1alpha; CK1alpha; Epididymis Secretory Sperm Binding Protein Li 77p; Down-Regulated In Lung Cancer; Casein Kinase 1, Alpha; HEL-S-77p; HLCDGP1; PRO2975.
Calculated MW	Calculated MW: 39 kDa; Observed MW: 34 kDa
Uniprot ID	P48729
Gene ID	1452
Background	Casein kinases are operationally defined by their preferential utilization of acidic proteins such as caseins as substrates. It can phosphorylate a large number of proteins. Participates in Wnt signaling. Phosphorylates CTNNB1 at 'Ser-45'. May play a role in segregating chromosomes during mitosis.



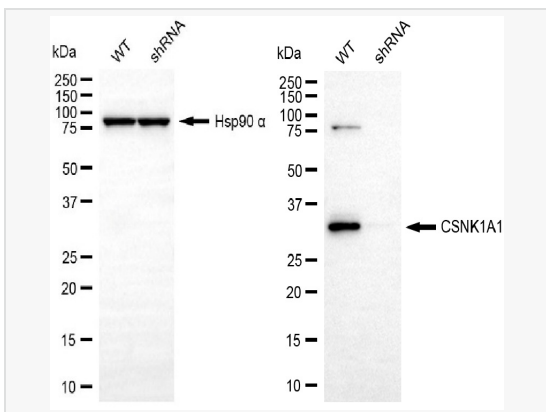
Flow cytometric analysis of CSNK1A1 expression in C2C12 cells using CSNK1A1 antibody (R020472, 1:2,000). Green, isotype control; red, CSNK1A1.



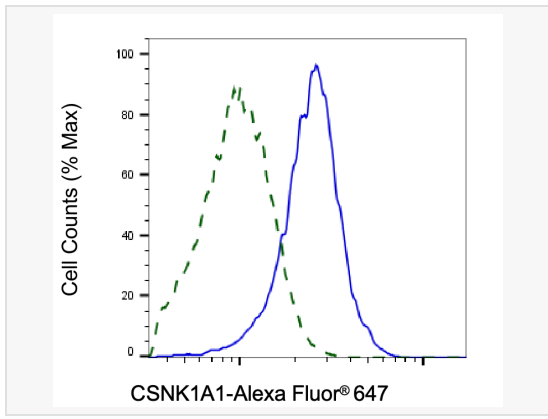
Immunocytochemical staining of HeLa cells with CSNK1A1 antibody (R020472, 1:1,000). Nuclei were stained blue with DAPI; CSNK1A1 was stained magenta with Alexa Fluor® 647. Images were taken using Leica stellaris 5. Protein abundance based on laser Intensity and smart gain: Medium. Scale bar, 20 µm.



Western blotting analysis using CSNK1A1 antibody (R020472). Total cell lysates (30 µg) from various cell lines were loaded and separated by SDS-PAGE. The blot was incubated with CSNK1A1 antibody (R020472, 1:5,000) and HRP-conjugated goat anti-rabbit secondary antibody (1:20,000) respectively. Image was developed using ECL Substrate Kit.



Western blotting analysis using CSNK1A1 antibody (R020472). CSNK1A1 expression in wild-type (WT) and CSNK1A1 shRNA knockdown (KD) HeLa cells with 20 µg of total cell lysates. Hsp90 α serves as a loading control. The blot was incubated with CSNK1A1 antibody (R020472, 1:5,000) and HRP-conjugated goat anti-rabbit secondary antibody (1:20,000) respectively. Image was developed using ECL Substrate Kit.



Validation of CSNK1A1 knockdown using flow cytometry. Wild-type(WT, Blue) and knockdown(KD, Green) HeLa cells were stained with CSNK1A1 antibody (R020472, 1:2,000) and analyzed using BD flow cytometer.