

[KD Validated] Anti-PAIP1 Rabbit mAb

Purified Recombinant Rabbit Monoclonal Antibody

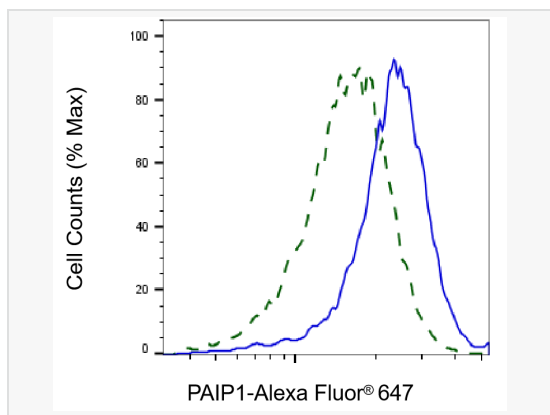
Catalog # R020463

Product Information

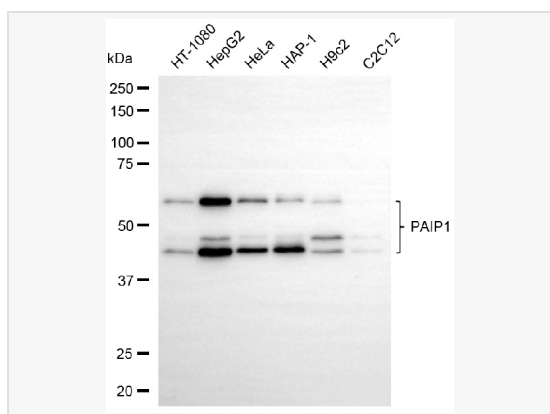
Application	WB, FC
Reactivity	Human, Mouse, Rat
Dilution	WB 1:1,000~1:5,000; FC 1:100~1:1,000
Host	Rabbit
Clonality	Monoclonal
Clone No.	53P11T68
Isotype	IgG
Label	Unconjugated
Immunogen	A synthesized peptide derived from human PAIP1
Format	Affinity purified monoclonal antibody supplied in PBS with 0.02% sodium azide and 50% glycerol, pH 7.3.
Storage	Shipped on wet ice. Store at -20°C. Stable for 12 months from date of receipt. Aliquoting is unnecessary for -20°C storage.
Precautions	[KD Validated] Anti-PAIP1 Rabbit mAb [53P11T68] is for research use only and not for use in diagnostic or therapeutic procedures.

Protein Information

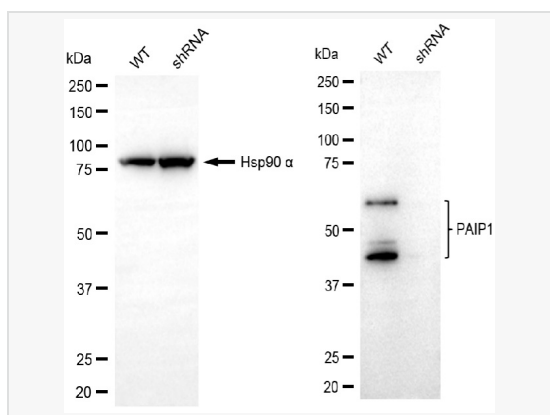
Synonyms	PAIP1; Poly(A) Binding Protein Interacting Protein 1; PABP-Interacting Protein 1; Polyadenylate-Binding Protein-Interacting Protein 1; PAIP-1; Poly(A)-Binding Protein-Interacting Protein 1; PABC1-Interacting Protein 1.
Calculated MW	Calculated MW: 54 kDa; Observed MW: 45-60 kDa
Uniprot ID	Q9H074
Gene ID	10605
Background	The protein encoded by this gene interacts with poly(A)-binding protein and with the cap-binding complex eIF4A. It is involved in translational initiation and protein biosynthesis. Overexpression of this gene in COS7 cells stimulates translation. Alternative splicing occurs at this locus and three transcript variants encoding three distinct isoforms have been identified. [provided by RefSeq, Jul 2008]
Cellular Location	Cytoplasm.



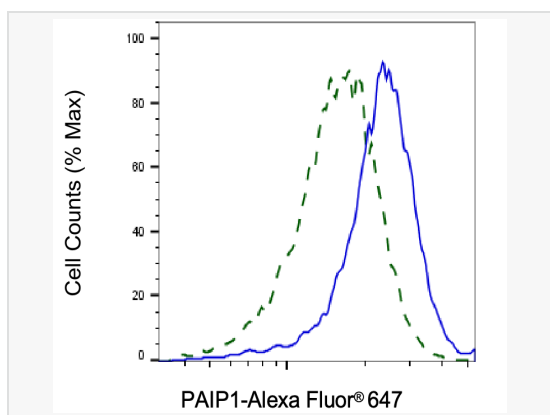
Flow cytometric analysis of PAIP1 expression in HepG2 cells using PAIP1 antibody (R020463, 1:2,000). Green, isotype control; red, PAIP1.



Western blotting analysis using PAIP1 antibody (R020463). Total cell lysates (30 μ g) from various cell lines were loaded and separated by SDS-PAGE. The blot was incubated with PAIP1 antibody (R020463, 1:5,000) and HRP-conjugated goat anti-rabbit secondary antibody (1:20,000) respectively. Image was developed using ECL Substrate Kit.



Western blotting analysis using PAIP1 antibody (R020463). PAIP1 expression in wild-type (WT) and PAIP1 shRNA knockdown (KD) HeLa cells with 30 μ g of total cell lysates. Hsp90 α serves as a loading control. The blot was incubated with PAIP1 antibody (R020463, 1:5,000) and HRP-conjugated goat anti-rabbit secondary antibody (1:20,000) respectively. Image was developed using ECL Substrate Kit.



Validation of PAIP1 knockdown using flow cytometry. Wild-type(WT, Blue) and knockdown(KD, Green) HeLa cells were stained with PAIP1 antibody (R020463, 1:2,000) and analyzed using BD flow cytometer.