

[KD Validated] Anti-PIP5K1C Rabbit mAb

Purified Recombinant Rabbit Monoclonal Antibody

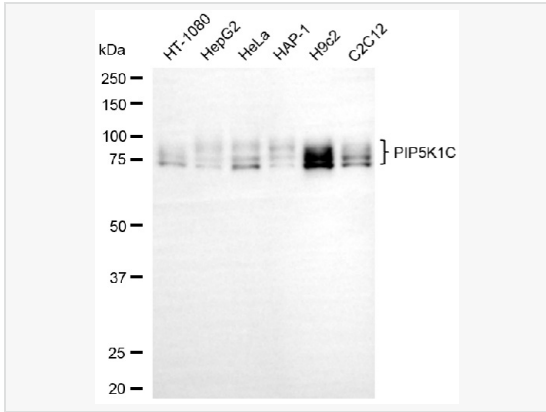
Catalog # R020435

Product Information

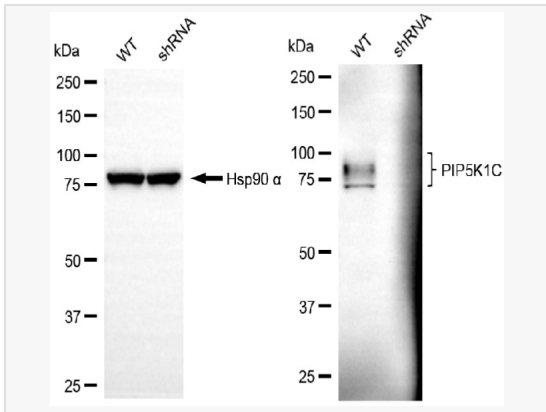
Application	WB, FC, IF (Cell)/ICC
Reactivity	Human, Mouse, Rat
Dilution	WB 1:1,000~1:5,000; FC 1:200~1:2,000; IF 1:100~1:1,000
Host	Rabbit
Clonality	Monoclonal
Clone No.	30Q95L94
Isotype	IgG
Label	Unconjugated
Immunogen	A synthesized peptide derived from human PIP5K1C
Format	Affinity purified monoclonal antibody supplied in PBS with 0.02% sodium azide and 50% glycerol, pH 7.3.
Storage	Shipped on wet ice. Store at -20°C. Stable for 12 months from date of receipt. Aliquoting is unnecessary for -20°C storage.
Precautions	[KD Validated] Anti-PIP5K1C Rabbit mAb [30Q95L94] is for research use only and not for use in diagnostic or therapeutic procedures.

Protein Information

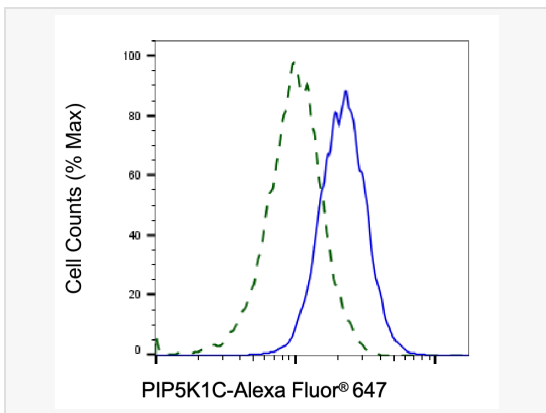
Synonyms	PIP5K1C; Phosphatidylinositol-4-Phosphate 5-Kinase Type 1 Gamma; PIP5Kgamma; KIAA0589; LCCS3; Phosphatidylinositol-4-Phosphate 5-Kinase, Type I, Gamma; Phosphatidylinositol 4-Phosphate 5-Kinase Type-1 Gamma; Type I Phosphatidylinositol 4-Phosphate 5-Kinase Gamma; PtdIns(4)P-5-Kinase 1 Gamma; PIP5K1gamma; EC 2.7.1.68; Diphosphoinositide Kinase; Type I PIP Kinase; PIP5K1-Gamma; PIP5K-GAMMA; EC 2.7.1.
Calculated MW	Calculated MW: 73 kDa; Observed MW: 73-90 kDa
Uniprot ID	O60331
Gene ID	23396



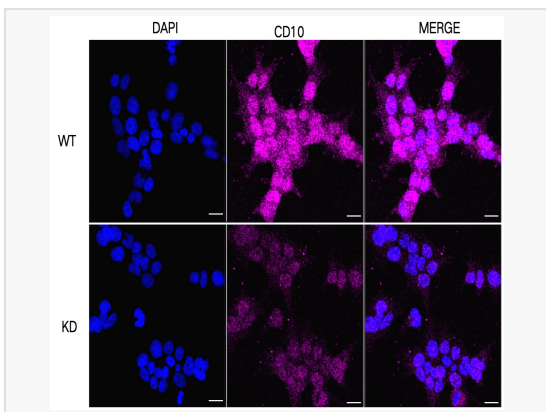
Western blotting analysis using PIP5K1C antibody (R020435). Total cell lysates (30 μ g) from various cell lines were loaded and separated by SDS-PAGE. The blot was incubated with PIP5K1C antibody (R020435, 1:5,000) and HRP-conjugated goat anti-rabbit secondary antibody (1:20,000) respectively. Image was developed using ECL Substrate Kit.



Western blotting analysis using PIP5K1C antibody (R020435). PIP5K1C expression in wild-type (WT) and PIP5K1C shRNA knockdown (KD) HeLa cells with 30 μ g of total cell lysates. Hsp90 α serves as a loading control. The blot was incubated with PIP5K1C antibody (R020435, 1:2,000) and HRP-conjugated goat anti-rabbit secondary antibody (1:20,000) respectively. Image was developed using ECL Substrate Kit.



Validation of PIP5K1C knockdown using flow cytometry. Wild-type(WT, Blue) and knockdown(KD, Green) HeLa cells were stained with PIP5K1C antibody (R020435, 1:2,000) and analyzed using BD flow cytometer.



Immunocytochemical staining of HeLa cells using PIP5K1C antibody (R020435, 1:1,000). Top panel: wild-type (WT); Bottom panel: PIP5K1C shRNA knockdown (KD). Nuclei were stained blue with DAPI; Acyl-CoA dehydrogenase short chain was stained magenta with Alexa Fluor[®] 647. Scale bar, 20 μ m.