

[KD Validated] Anti-GSDME Rabbit mAb

Purified Recombinant Rabbit Monoclonal Antibody

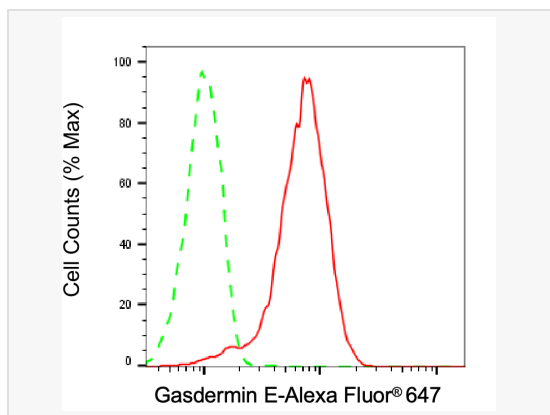
Catalog # R020411

Product Information

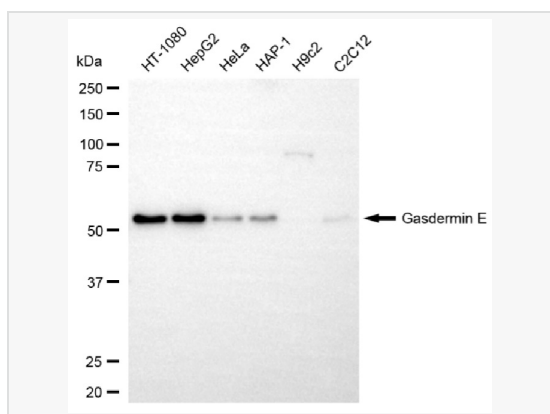
Application	WB, FC
Reactivity	Human, Mouse
Dilution	WB 1:1,000~1:5,000; FC 1:200~1:2,000
Host	Rabbit
Clonality	Monoclonal
Clone No.	25L82A81
Isotype	IgG
Label	Unconjugated
Immunogen	Recombinant protein of human GSDME
Format	Affinity purified monoclonal antibody supplied in PBS with 0.02% sodium azide and 50% glycerol, pH 7.3.
Storage	Shipped on wet ice. Store at -20°C. Stable for 12 months from date of receipt. Aliquoting is unnecessary for -20°C storage.
Precautions	[KD Validated] Anti-GSDME Rabbit mAb [25L82A81] is for research use only and not for use in diagnostic or therapeutic procedures.

Protein Information

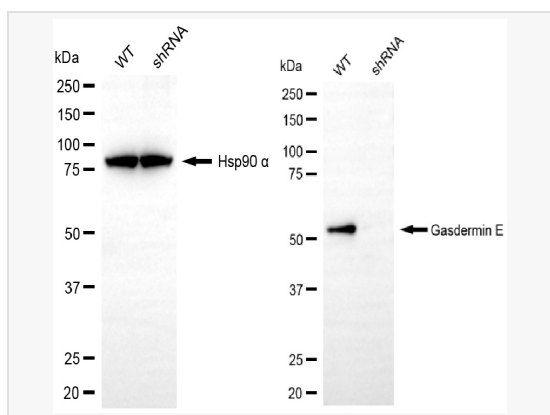
Synonyms	GSDME; Gasdermin E; ICERE-1; DFNA5; Inversely Correlated With Estrogen Receptor Expression 1; DFNA5, Deafness Associated Tumor Suppressor; Non-Syndromic Hearing Impairment Protein 5; Gasdermin-E; Inversely Correlated With Estrogen Receptor Expression; Nonsyndromic Hearing Impairment Protein; Deafness, Autosomal Dominant 5; ICERE1.
Calculated MW	Calculated MW: 55 kDa; Observed MW: 55 kDa
Uniprot ID	O60443
Gene ID	1687
Background	Hearing impairment is a heterogeneous condition with over 40 loci described. The protein encoded by this gene is expressed in fetal cochlea, however, its function is not known. Nonsyndromic hearing impairment is associated with a mutation in this gene. Three transcript variants encoding two different isoforms have been found for this gene. [provided by RefSeq, Jul 2008]
Cellular Location	Gasdermin-E, N-terminal.Cell membrane.Multi-pass membrane protein.Gasdermin-E.Cytoplasm.Cytosol.
Tissue Location	Expressed in cochlea (PubMed:9771715). Low level of expression in heart, brain, placenta, lung, liver, skeletal muscle, kidney and pancreas, with highest expression in placenta (PubMed:9771715).



Flow cytometric analysis of Gasdermin E expression in HepG2 cells using Gasdermin E antibody (R020411, 1:2,000). Green, isotype control; red, Gasdermin E.



Western blotting analysis using gasdermin E antibody (R020411). Total cell lysates (30 μ g) from various cell lines were loaded and separated by SDS-PAGE. The blot was incubated with gasdermin E antibody (R020411, 1:5,000) and HRP-conjugated goat anti-rabbit secondary antibody (1:20,000) respectively. Image was developed using ECL Substrate Kit.



Western blotting analysis using gasdermin E antibody (R020411). Gasdermin E expression in wild-type (WT) and gasdermin E (GSDME) shRNA knockdown (KD) HeLa cells with 20 μ g of total cell lysates. Hsp90 α serves as a loading control. The blot was incubated with gasdermin E antibody (R020411, 1:5,000) and HRP-conjugated goat anti-rabbit secondary antibody (1:20,000) respectively. Image was developed using ECL Substrate Kit.