

## [KD Validated] Anti-EEF1A2 Rabbit mAb

Purified Recombinant Rabbit Monoclonal Antibody

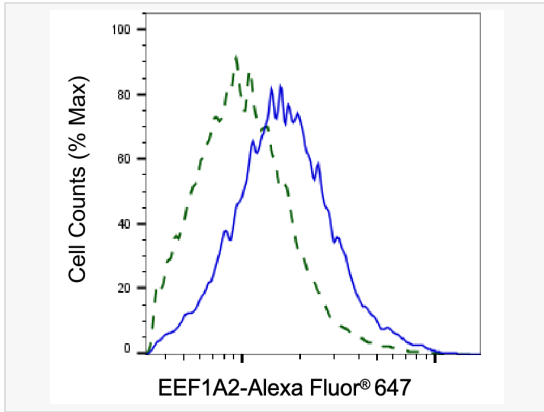
Catalog # R020371

### Product Information

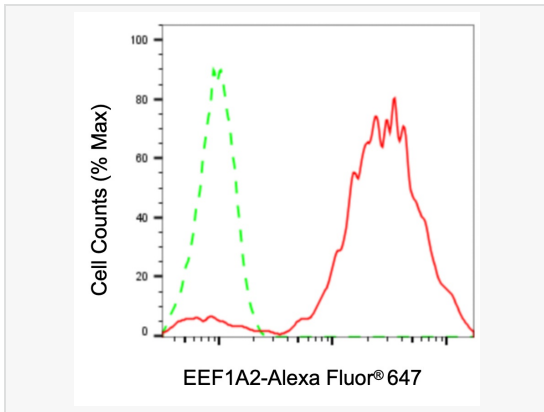
Application	WB, FC
Reactivity	Human
Dilution	WB 1:1,000~1:5,000; FC 1:200~1:2,000
Host	Rabbit
Clonality	Monoclonal
Clone No.	40D44E33
Isotype	IgG
Label	Unconjugated
Immunogen	A synthesized peptide derived from human EEF1A2
Format	Affinity purified monoclonal antibody supplied in PBS with 0.02% sodium azide and 50% glycerol, pH 7.3.
Storage	Shipped on wet ice. Store at -20°C. Stable for 12 months from date of receipt. Aliquoting is unnecessary for -20°C storage.
Precautions	[KD Validated] Anti-EEF1A2 Rabbit mAb [40D44E33] is for research use only and not for use in diagnostic or therapeutic procedures.

### Protein Information

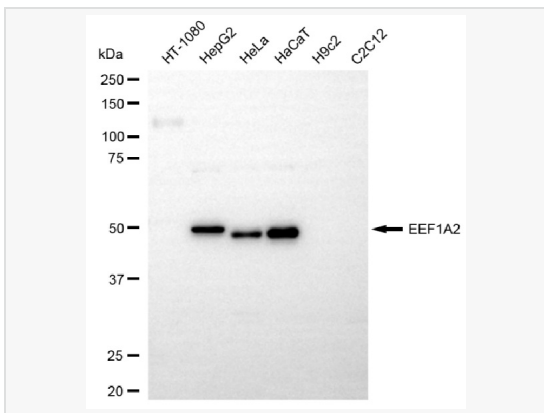
Synonyms	EEF1A2; Eukaryotic Translation Elongation Factor 1 Alpha 2; EEF1AL; HS1; STN; Eukaryotic Elongation Factor 1 A-2; Elongation Factor 1-Alpha 2; EF-1-Alpha-2; Statin-S1; STNL; Statin-Like; EEF1A-2; Statin; EIEE33; DEE33; MRD38; EF1A.
Calculated MW	Calculated MW: 50 kDa; Observed MW: 48-50 kDa
Uniprot ID	Q05639
Gene ID	1917
Background	This gene encodes an isoform of the alpha subunit of the elongation factor-1 complex, which is responsible for the enzymatic delivery of aminoacyl tRNAs to the ribosome. This isoform (alpha 2) is expressed in brain, heart and skeletal muscle, and the other isoform (alpha 1) is expressed in brain, placenta, lung, liver, kidney, and pancreas. This gene may be critical in the development of ovarian cancer. [provided by RefSeq, Mar 2014]
Cellular Location	Nucleus.
Tissue Location	Brain, heart, and skeletal muscle.



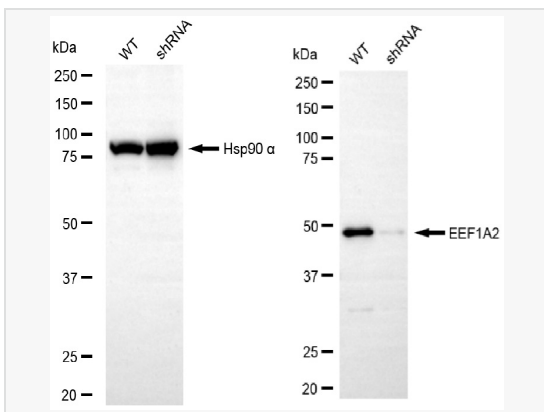
Validation of EEF1A2 knockdown using flow cytometry. Wild-type(WT, Blue) and knockdown(KD, Green) HeLa cells were stained with EEF1A2 antibody (R020371, 1:2,000) and analyzed using BD flow cytometer.



Flow cytometric analysis of EEF1A2 expression in HaCaT cells using EEF1A2 antibody (R020371,1:2,000). Green, isotype control; red, EEF1A2.



Western blotting analysis using EEF1A2 antibody (R020371). Total cell lysates (30 µg) from various cell lines were loaded and separated by SDS-PAGE. The blot was incubated with EEF1A2 antibody (R020371, 1:5,000) and HRP-conjugated goat anti-rabbit secondary antibody (1:20,000) respectively. Image was developed using ECL Substrate Kit.



Western blotting analysis using EEF1A2 antibody (R020371). EEF1A2 expression in wild-type (WT) and EEF1A2 shRNA knockdown (KD) HeLa cells with 20 µg of total cell lysates. Hsp90 α serves as a loading control. The blot was incubated with EEF1A2 antibody (R020371, 1:5,000) and HRP-conjugated goat anti-rabbit secondary antibody (1:20,000) respectively. Image was developed using ECL Substrate Kit.