

[KD Validated] Anti-NUMB Rabbit mAb

Purified Recombinant Rabbit Monoclonal Antibody

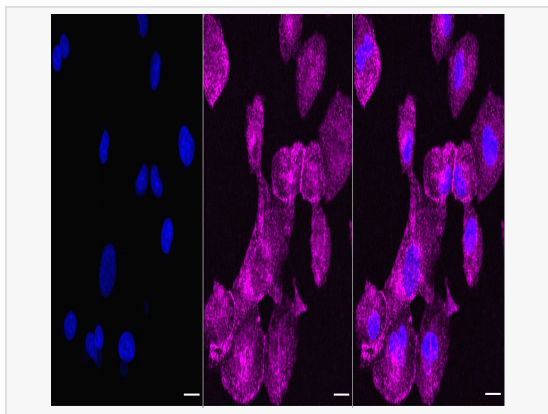
Catalog # R020368

Product Information

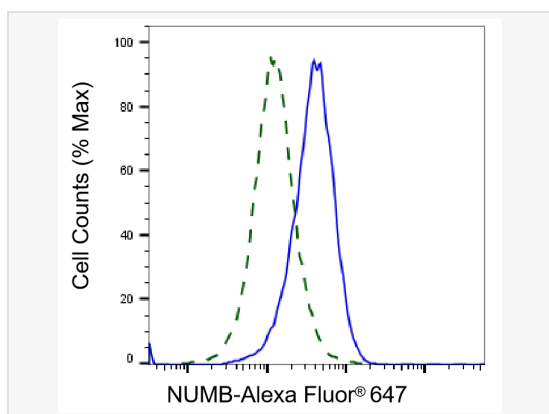
Application	WB, FC, IF (Cell)/ICC
Reactivity	Human, Mouse, Rat
Dilution	WB 1:1,000~1:5,000; FC 1:200~1:2,000; IF 1:100~1:1,000
Host	Rabbit
Clonality	Monoclonal
Clone No.	35P50Q18
Isotype	IgG
Label	Unconjugated
Immunogen	A synthesized peptide derived from human NUMB
Format	Affinity purified monoclonal antibody supplied in PBS with 0.02% sodium azide and 50% glycerol, pH 7.3.
Storage	Shipped on wet ice. Store at -20°C. Stable for 12 months from date of receipt. Aliquoting is unnecessary for -20°C storage.
Precautions	[KD Validated] Anti-NUMB Rabbit mAb [35P50Q18] is for research use only and not for use in diagnostic or therapeutic procedures.

Protein Information

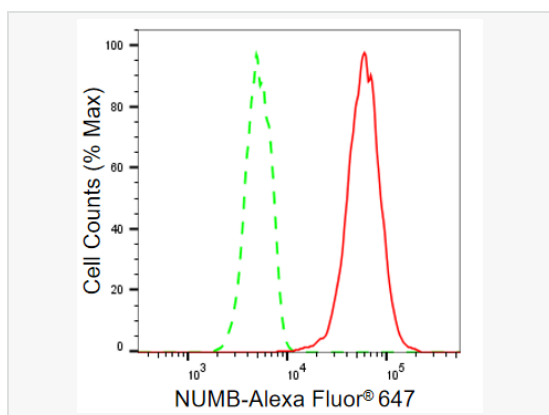
Synonyms	Numb Homolog (Drosophila); Numb (Drosophila) Homolog; C14orf41; c14_5527; h-Numb; Protein Numb Homolog; S171; Protein S171; Chromosome 14 Open Reading Frame 41.
Calculated MW	Calculated MW: 71 kDa, Observed MW: 71 kDa
Uniprot ID	P49757
Gene ID	8650
Background	Numb acts as a negative regulator of Notch signaling by promoting ubiquitination and degradation of Notch. The protein is asymmetrically segregated into one daughter cell during cell division, producing two daughter cells with different responses to Notch signaling and different cell fates. The localization of Numb can also be regulated by G-protein coupled receptor (GPCR) and PKC signaling.
Cellular Location	Membrane.



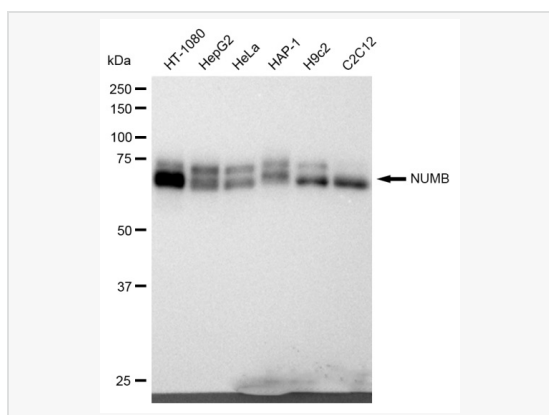
Immunocytochemical staining of HT-1080 cells with NUMB antibody(R020368, 1:1,000) . Nuclei were stained blue with DAPI; NUMB was stained magenta with Alexa Fluor® 647. Images were taken using Leica stellaris 5. Protein abundance based on laser Intensity and smart gain: Medium. Scale bar, 20 µm.



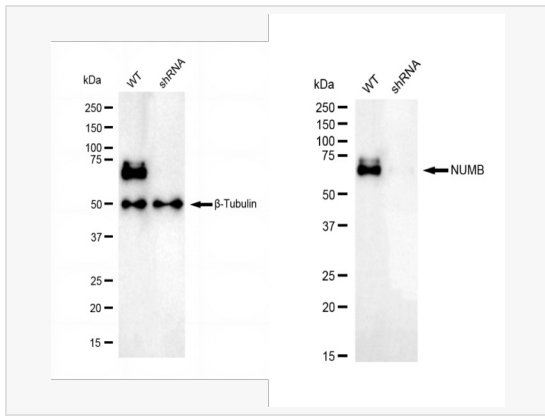
Validation of NUMB knockdown using flow cytometry. Wild-type(WT, Blue) and knockdown(KD, Green) HT-1080 cells were stained with NUMB antibody (R020368, 1:2,000) and analyzed using BD flow cytometer.



Flow cytometric analysis of NUMB expression in HT-1080 cells using NUMB antibody (R020368, 1:2,000). Green, isotype control; red, NUMB.



Western blotting analysis using NUMB antibody (R020368). Total cell lysates (30 µg) from various cell lines were loaded and separated by SDS-PAGE. The blot was incubated with NUMB antibody (R020368, 1:5,000) and HRP-conjugated goat anti-rabbit secondary antibody (1:50,000) respectively. Image was developed using ECL Substrate Kit.



Western blotting analysis using NUMB antibody (R020368). NUMB expression in wild type (WT) and NUMB shRNA knockdown (KD) HT-1080 cells with 30 μ g of total cell lysates. β -Tubulin serves as a loading control. The blot was incubated with NUMB antibody (R020368, 1:5,000) and HRP-conjugated goat anti-rabbit secondary antibody (1:20,000) respectively. Image was developed using ECL Substrate Kit.