

[KD Validated] Anti-BCL2 Rabbit mAb

Purified Recombinant Rabbit Monoclonal Antibody

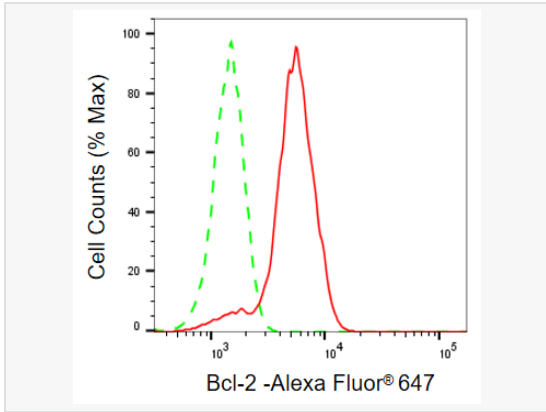
Catalog # R020321

Product Information

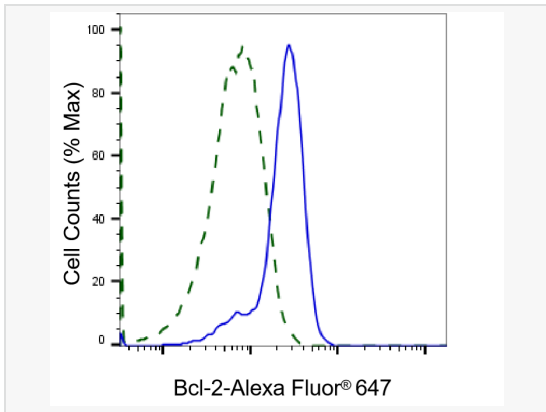
Application	WB, FC, IHC-P/IF (Tissue-P)
Reactivity	Human
Dilution	WB 1:1,000~1:5,000; FC 1:200~1:2,000; IHC-P 1:100~1:200
Host	Rabbit
Clonality	Monoclonal
Clone No.	91C78B06
Isotype	IgG
Label	Unconjugated
Immunogen	A synthesized peptide derived from human Bcl-2
Format	Affinity purified monoclonal antibody supplied in PBS with 0.02% sodium azide and 50% glycerol, pH 7.3.
Storage	Shipped on wet ice. Store at -20°C. Stable for 12 months from date of receipt. Aliquoting is unnecessary for -20°C storage.
Precautions	[KD Validated] Anti-BCL2 Rabbit mAb [91C78B06] is for research use only and not for use in diagnostic or therapeutic procedures.

Protein Information

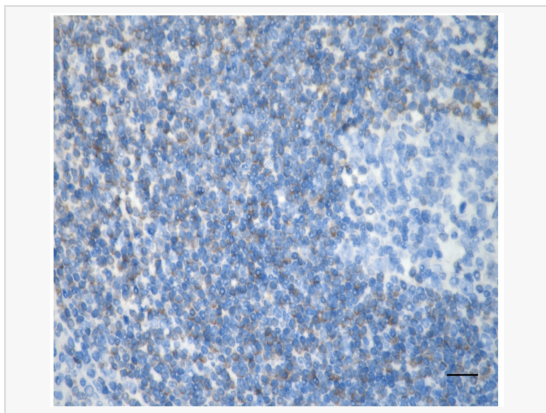
Synonyms	BCL2 Apoptosis Regulator; PPP1R50; Bcl-2; Protein Phosphatase 1, Regulatory Subunit 50; Apoptosis Regulator Bcl-2; B-Cell CLL/Lymphoma 2; BCL2, Apoptosis Regulator.
Calculated MW	Calculated MW: 26 kDa, Observed MW: 26 kDa
Uniprot ID	P10415
Gene ID	596
Background	This gene encodes an integral outer mitochondrial membrane protein that blocks the apoptotic death of some cells such as lymphocytes. Constitutive expression of BCL2, such as in the case of translocation of BCL2 to Ig heavy chain locus, is thought to be the cause of follicular lymphoma.



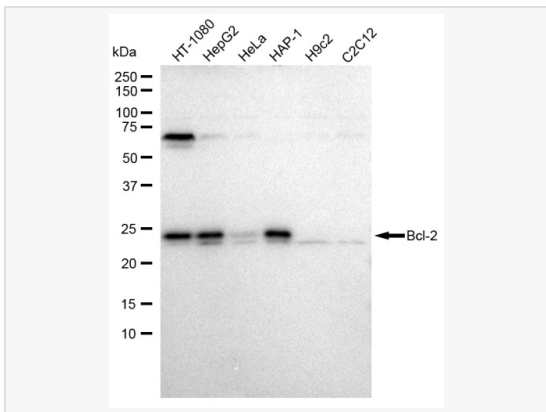
Flow cytometric analysis of Bcl-2 expression in HepG2 cells using Bcl-2 antibody (R020321, 1:2,000). Green, isotype control;red, Bcl-2.



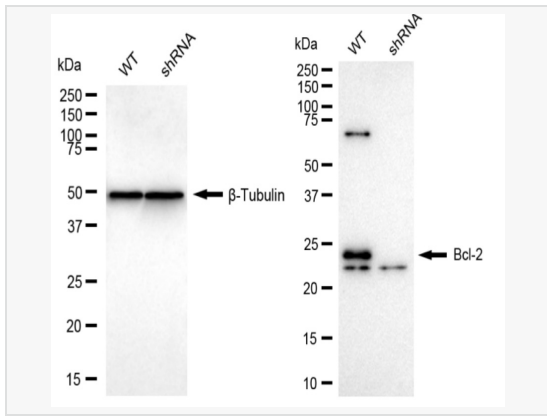
Validation of Bcl-2 knockdown using flow cytometry. Wild-type(WT, Blue) and knockdown(KD, Green) HeLa cells were stained with Bcl-2 antibody (R020321, 1:2,000) and analyzed using BD flow cytometer.



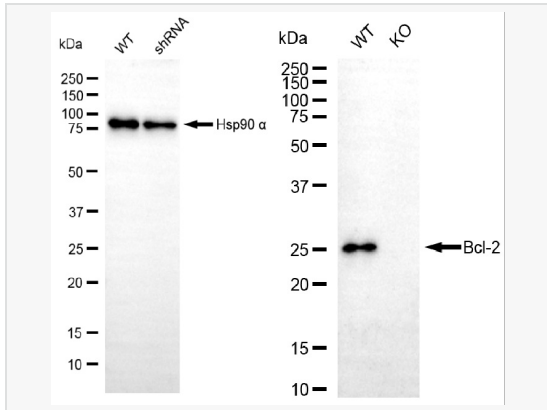
Immunohistochemistry was performed on paraffin-embedded human tonsillitis using bcl-2 antibody (R020321, 1:200). Antigen retrieval was done in sodium citrate buffer (pH 6.0). DAB was used for detection, with hematoxylin counterstaining. Images were acquired using a Nikon Ci-L Plus microscope (40× objective). Scale bar: 25 μm.



Western blotting analysis using Bcl 2 antibody (R020321). Total cell lysates (30 μg) from various cell lines were loaded and separated by SDS-PAGE. The blot was incubated with Bcl 2 antibody (R020321, 1:5,000) and HRP-conjugated goat anti-rabbit secondary antibody (1:20,000) respectively. Image was developed using ECL Substrate Kit.



Western blotting analysis using Bcl-2 antibody (R020321). Bcl-2 expression in wild type (WT) and Bcl-2 shRNA knockdown (KD) HeLa cells with 20 μ g of total cell lysates. β -Tubulin serves as a loading control. The blot was incubated with Bcl-2 antibody (R020321, 1:5,000) and HRP-conjugated goat anti-rabbit secondary antibody (1:20,000) respectively. Image was developed using ECL Substrate Kit.



Western blotting analysis using Bcl-2 antibody (R020321). Bcl-2 expression in wild type (WT) and BCL2 knockout (KO) HeLa cells with 20 μ g of total cell lysates. Hsp90 α serves as a loading control. The blot was incubated with Bcl-2 antibody (R020321, 1:5,000) and HRP-conjugated goat anti-rabbit secondary antibody (1:20,000) respectively. Image was developed using ECL Substrate Kit.