

[KD Validated] Anti-CCNB1 Rabbit mAb

Purified Recombinant Rabbit Monoclonal Antibody

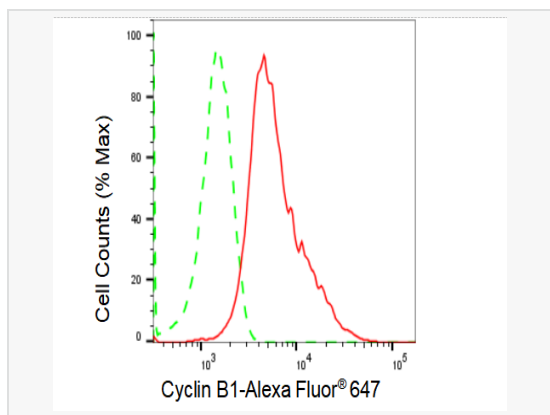
Catalog # R020291

Product Information

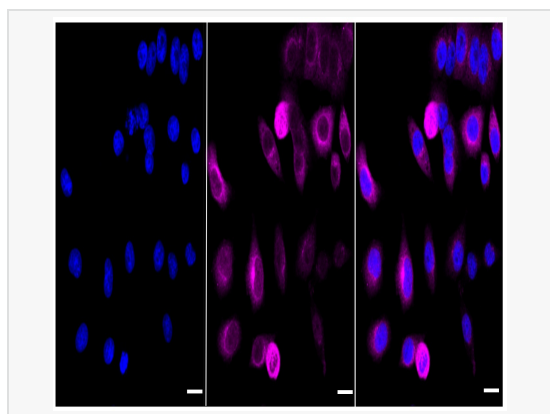
Application	WB, FC, IF (Cell)/ICC
Reactivity	Human, Mouse, Rat
Dilution	WB 1:1,000~1:5,000; FC 1:200~1:2,000; IF 1:100~1:1,000
Host	Rabbit
Clonality	Monoclonal
Clone No.	51O04N11
Isotype	IgG
Label	Unconjugated
Immunogen	A synthesized peptide derived from human Cyclin B1
Format	Affinity purified monoclonal antibody supplied in PBS with 0.02% sodium azide and 50% glycerol, pH 7.3.
Storage	Shipped on wet ice. Store at -20°C. Stable for 12 months from date of receipt. Aliquoting is unnecessary for -20°C storage.
Precautions	[KD Validated] Anti-CCNB1 Rabbit mAb [51O04N11] is for research use only and not for use in diagnostic or therapeutic procedures.

Protein Information

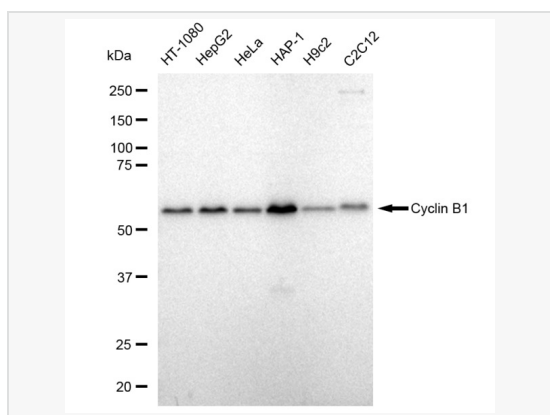
Synonyms	CCNB1; Cyclin B1; CCNB; G2/Mitotic-Specific Cyclin-B1; G2/Mitotic-Specific Cyclin B1.
Calculated MW	Calculated MW: 48 kDa, Observed MW: 55 kDa
Uniprot ID	P14635
Gene ID	891
Background	Essential for the control of the cell cycle at the G2/M (mitosis) transition. a member of the highly conserved cyclin family, whose members are characterized by a dramatic periodicity in protein abundance through the cell cycle. Cyclins function as regulators of CDK kinases.



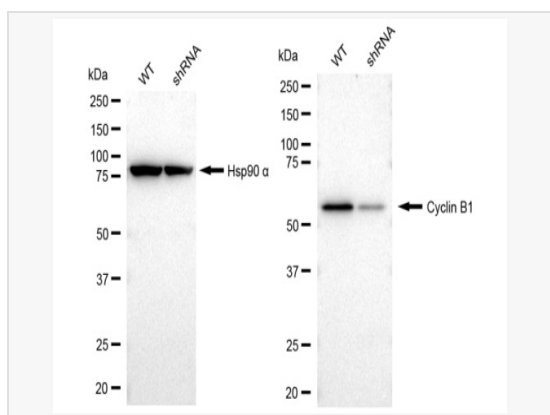
Flow cytometric analysis of Cyclin B1 expression in HepG2 cells using Cyclin B1 antibody (R020291, 1:2,000). Green, isotype control; red, Cyclin B1.



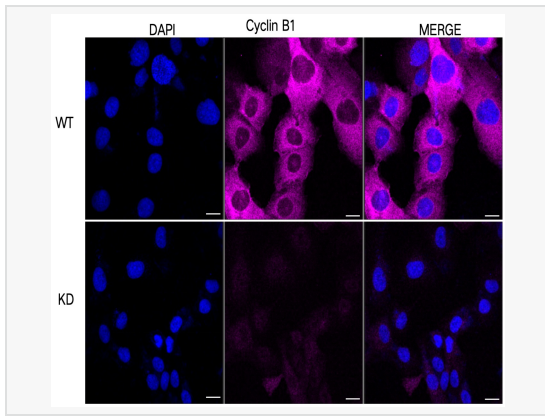
Immunocytochemical staining of HepG2 cells with Cyclin B1 antibody (R020291, 1:1,000). Nuclei were stained blue with DAPI; Cyclin B1 was stained magenta with Alexa Fluor® 647. Images were taken using Leica stellaris 5. Protein abundance based on laser Intensity and smart gain: High. Scale bar: 20 µm.



Western blotting analysis using Cyclin B1 antibody (R020291). Total cell lysates (30 µg) from various cell lines were loaded and separated by SDS-PAGE. The blot was incubated with Cyclin B1 antibody (R020291, 1:5,000) and HRP-conjugated goat anti-rabbit secondary antibody (1:20,000) respectively. Image was developed using ECL Substrate Kit.



Western blotting analysis using Cyclin B1 antibody (R020291). Cyclin B1 expression in wild type (WT) and cyclin B1 shRNA knockdown (KD) HT-1080 cells with 30 µg of total cell lysates. Hsp90 α serves as a loading control. The blot was incubated with Cyclin B1 antibody (R020291, 1:5,000) and HRP-conjugated goat anti-rabbit secondary antibody (1:20,000) respectively. Image was developed using ECL Substrate Kit.



Immunocytochemical staining of HT-1080 cells using Cyclin B1 antibody (R020291, 1:1,000), Top panel: wild-type (WT); Bottom panel: Cyclin B1 shRNA knockdown (KD). Nuclei were stained blue with DAPI; Cyclin B1 was stained magenta with Alexa Fluor® 647. Scale bar, 20 μ m.