

[KD Validated] Anti-BMI1 Rabbit mAb

Purified Recombinant Rabbit Monoclonal Antibody

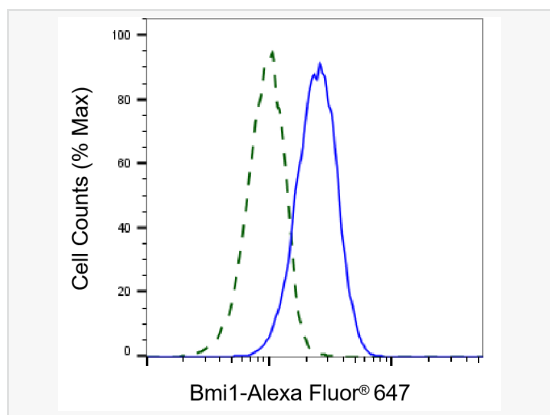
Catalog # R020267

Product Information

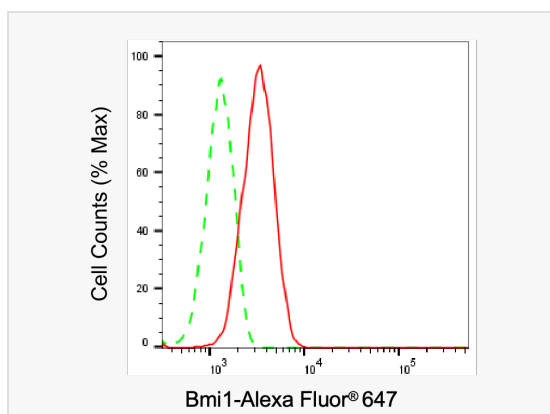
Application	WB, FC, IF (Cell)/ICC
Reactivity	Human, Rat
Dilution	WB 1:1,000~1:5,000; FC 1:200~1:2,000; IF 1:100~1:1,000
Host	Rabbit
Clonality	Monoclonal
Clone No.	49P13O11
Isotype	IgG
Label	Unconjugated
Immunogen	A synthesized peptide derived from human BMI1
Format	Affinity purified monoclonal antibody supplied in PBS with 0.02% sodium azide and 50% glycerol, pH 7.3.
Storage	Shipped on wet ice. Store at -20°C. Stable for 12 months from date of receipt. Aliquoting is unnecessary for -20°C storage.
Precautions	[KD Validated] Anti-BMI1 Rabbit mAb [49P13O11] is for research use only and not for use in diagnostic or therapeutic procedures.

Protein Information

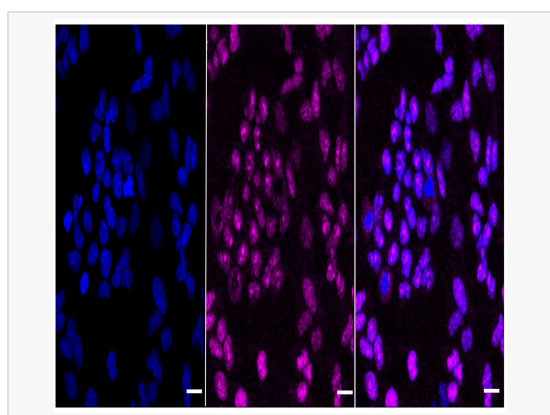
Synonyms	BMI1 Proto-Oncogene, Polycomb Ring Finger; RNF51; PCGF4; Polycomb Group RING Finger Protein 4; Polycomb Complex Protein BMI-1; B Lymphoma Mo-MLV Insertion Region 1 Homolog (Mouse); Murine Leukemia Viral (Bmi-1) Oncogene Homolog; B Lymphoma Mo-MLV Insertion Region 1 Homolog; BMI1 Polycomb Ring Finger Proto-Oncogene; BMI1 Polycomb Ring Finger Oncogene; Polycomb Group Ring Finger 4; Polycomb Group Protein Bmi1; Ring Finger Protein 51; RING Finger Protein 51; Flvi-2/Bmi-1; FLVI2/BMI1.
Calculated MW	Calculated MW: 37 kDa, Observed MW: 40 kDa
Uniprot ID	P35226
Gene ID	648
Background	This locus represents naturally occurring read-through transcription between the neighboring COMM domain-containing protein 3 and polycomb complex protein BMI-1 genes on chromosome 10. The read-through transcript produces a fusion protein that shares sequence identity with each individual gene product. [provided by RefSeq, Feb 2011]
Cellular Location	Nucleus.Cytoplasm.



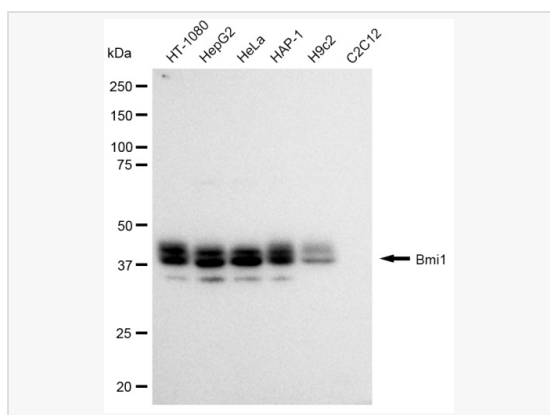
Validation of Bmi1 knockdown using flow cytometry. Wild-type(WT, Blue) and knockdown(KD, Green) HeLa cells were stained with Bmi1 antibody (R020267, 1:2,000) and analyzed using BD flow cytometer.



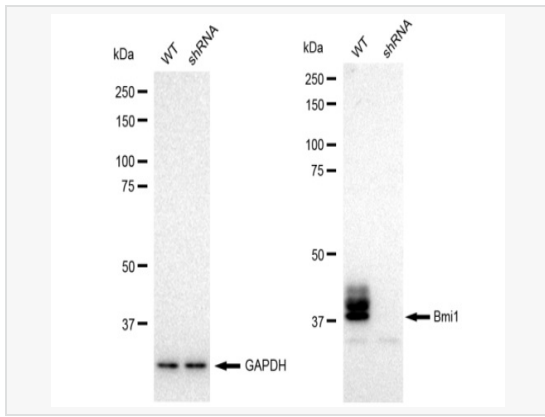
Flow cytometric analysis of Bmi1 expression in HepG2 cells using Bmi1 antibody (R020267, 1:2,000). Green, isotype control; red, Bmi1.



Immunocytochemical staining of HeLa cells with Bmi1 antibody (R020267, 1:1,000). Nuclei were stained blue with DAPI; Bmi1 was stained magenta with Alexa Fluor® 647. Images were taken using Leica stellaris 5. Protein abundance based on laser Intensity and smart gain: Medium. Scale bar: 20 μ m.



Western blotting analysis using Bmi1 antibody (R020267). Total cell lysates (30 μ g) from various cell lines were loaded and separated by SDS-PAGE. The blot was incubated with Bmi1 antibody (R020267, 1:5,000) and HRP-conjugated goat anti rabbit secondary antibody (1:50,000) respectively. Image was developed using ECL Substrate Kit.



Western blotting analysis using Bmi1 antibody (R020267). Bmi1 expression in wild type (WT) and Bmi1 shRNA knockdown (KD) 293T cells with 30 μ g of total cell lysates. GAPDH serves as a loading control. The blot was incubated with Bmi1 antibody (R020267, 1:5,000) and HRP-conjugated goat anti rabbit secondary antibody (1:50,000) respectively. Image was developed using ECL Substrate Kit.