

[KD Validated] Anti-CCND1 Rabbit mAb

Purified Recombinant Rabbit Monoclonal Antibody

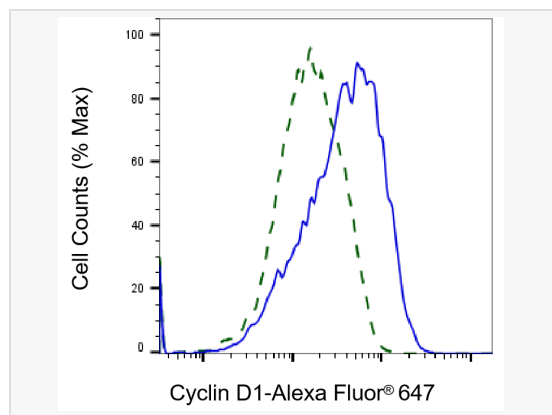
Catalog # R020266

Product Information

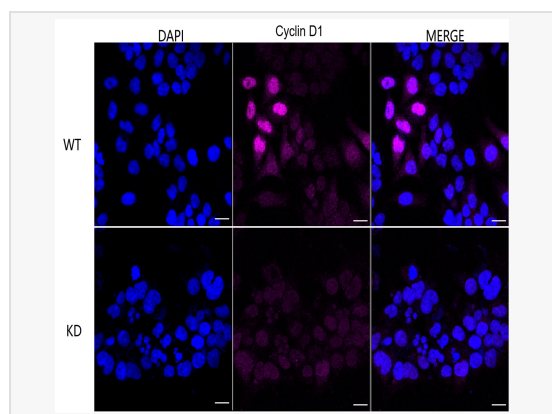
Application	WB, FC, IF (Cell)/ICC
Reactivity	Human, Mouse, Rat
Dilution	WB 1:2,000~1:10,000; FC 1:200~1:2,000; IF 1:100~1:1,000
Host	Rabbit
Clonality	Monoclonal
Clone No.	49S10E73
Isotype	IgG
Label	Unconjugated
Immunogen	A synthesized peptide derived from human Cyclin D1
Format	Affinity purified monoclonal antibody supplied in PBS with 0.02% sodium azide and 50% glycerol, pH 7.3.
Storage	Shipped on wet ice. Store at -20°C. Stable for 12 months from date of receipt. Aliquoting is unnecessary for -20°C storage.
Precautions	[KD Validated] Anti-CCND1 Rabbit mAb [49S10E73] is for research use only and not for use in diagnostic or therapeutic procedures.

Protein Information

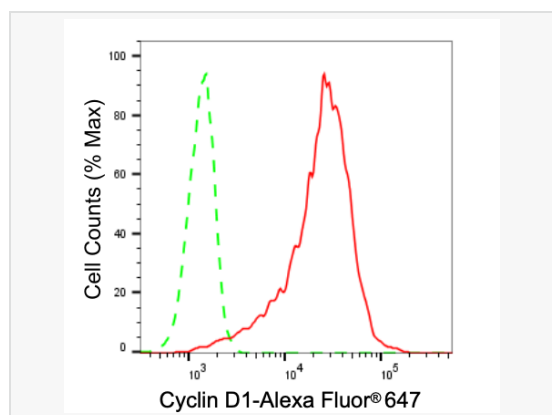
Synonyms	CCND1; Cyclin D1; U21B31; PRAD1; BCL1; B-Cell Lymphoma 1 Protein; G1/S-Specific Cyclin-D1; B-Cell CLL/Lymphoma 1; BCL-1 Oncogene; PRAD1 Oncogene; D11S287E; Cyclin D1 (PRAD1: Parathyroid Adenomatosis 1); Parathyroid Adenomatosis 1; G1/S-Specific Cyclin D1; BCL-1.
Calculated MW	Calculated MW: 34 kDa, Observed MW: 34 kDa
Uniprot ID	P24385
Gene ID	595
Background	Phosphorylation of RB1 allows dissociation of the transcription factor E2F from the RB/E2F complex and the subsequent transcription of E2F target genes which are responsible for the progression through the G1 phase. Hypophosphorylates RB1 in early G1 phase. Cyclin D-CDK4 complexes are major integrators of various mitogenic and antimitogenic signals.



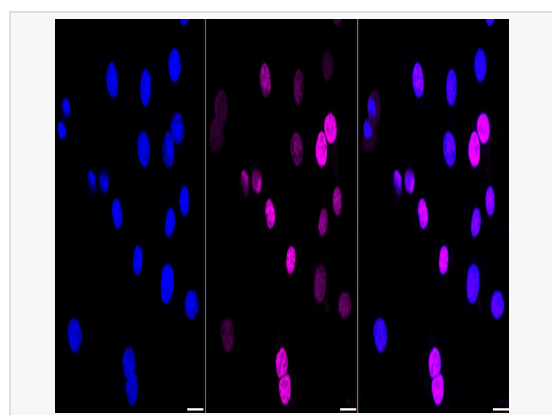
Validation of Cyclin D1 knockdown using flow cytometry. Wild-type(WT, Blue) and knockdown(KD, Green) HeLa cells were stained with Cyclin D1 antibody (R020266, 1:2,000) and analyzed using BD flow cytometer.



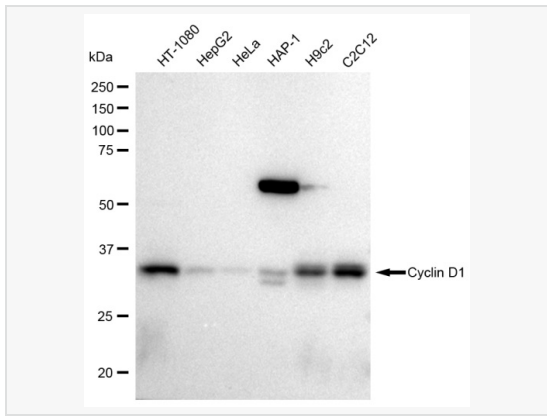
Immunocytochemical staining of HeLa cells using Cyclin D1 antibody (R020266, 1:1,000), Top panel: wild-type (WT); Bottom panel: Cyclin D1 shRNA knockdown (KD). Nuclei were stained blue with DAPI; Cyclin D1 was stained magenta with Alexa Fluor® 647. Scale bar, 20 μ m. Permeabilization: Triton.



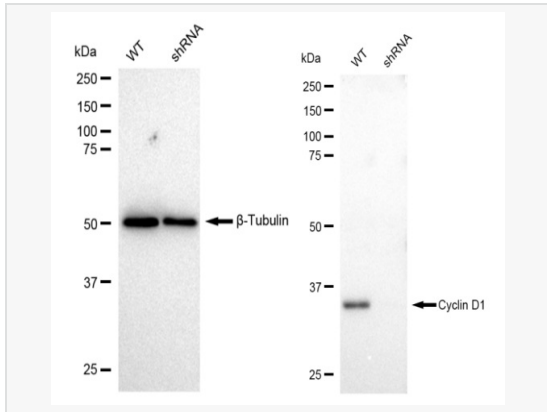
Flow cytometric analysis of Cyclin D1 expression in C2C12 cells using Cyclin D1 antibody (R020266, 1:2,000). Green, isotype control; red, Cyclin D1.



Immunocytochemical staining of C2C12 cells with Cyclin D1 antibody (R020266, 1:1,000). Nuclei were stained blue with DAPI; Cyclin D1 was stained magenta with Alexa Fluor® 647. Images were taken using Leica stellaris 5. Protein abundance based on laser Intensity and smart gain: High. Scale bar: 20 μ m.



Western blotting analysis using Cyclin D1 antibody (R020266). Total cell lysates (30 μ g) from various cell lines were loaded and separated by SDS-PAGE. The blot was incubated with Cyclin D1 antibody (R020266, 1:10,000) and HRP-conjugated goat anti rabbit secondary antibody (1:50,000) respectively. Image was developed using ECL Substrate Kit.



Western blotting analysis using Cyclin D1 antibody (R020266). Cyclin D1 expression in wild type (WT) and Cyclin D1 shRNA knockdown (KD) HeLa cells with 30 μ g of total cell lysates. β -Tubulin serves as a loading control. The blot was incubated with Cyclin D1 antibody (R020266, 1:10,000) and HRP-conjugated goat anti rabbit secondary antibody (1:50,000) respectively. Image was developed using ECL Substrate Kit.