

[KD Validated] Anti-CRK Rabbit mAb

Purified Recombinant Rabbit Monoclonal Antibody

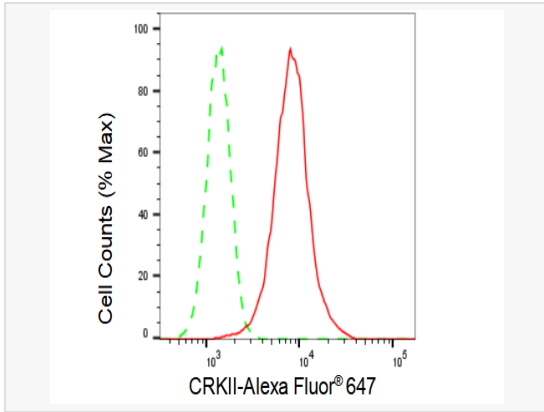
Catalog # R020259

Product Information

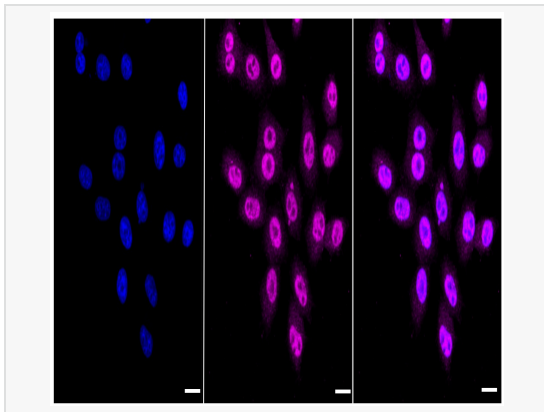
Application	WB, FC, IF (Cell)/ICC
Reactivity	Human, Mouse, Rat
Dilution	WB 1:1,000~1:5,000; FC 1:200~1:2,000; IF 1:100~1:1,000
Host	Rabbit
Clonality	Monoclonal
Clone No.	63S33Q59
Isotype	IgG
Label	Unconjugated
Immunogen	A synthesized peptide derived from human CRKII
Format	Affinity purified monoclonal antibody supplied in PBS with 0.02% sodium azide and 50% glycerol, pH 7.3.
Storage	Shipped on wet ice. Store at -20°C. Stable for 12 months from date of receipt. Aliquoting is unnecessary for -20°C storage.
Precautions	[KD Validated] Anti-CRK Rabbit mAb [63S33Q59] is for research use only and not for use in diagnostic or therapeutic procedures.

Protein Information

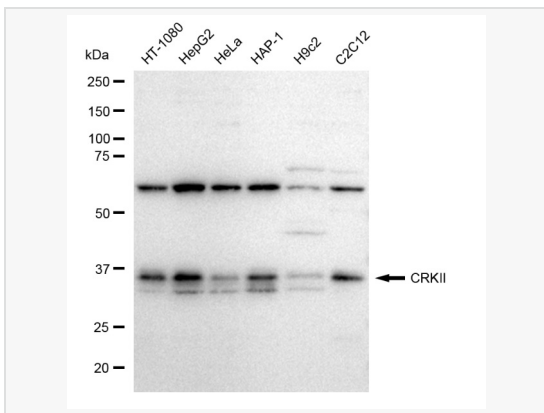
Synonyms	CRK; CRK Proto-Oncogene, Adaptor Protein; V-Crk Avian Sarcoma Virus CT10 Oncogene Homolog; Adapter Molecule Crk; Proto-Oncogene C-Crk; P38; V-Crk Sarcoma Virus CT10 Oncogene-Like Protein; CRKII.
Calculated MW	Calculated MW: 34 kDa, Observed MW: 35 kDa
Uniprot ID	P46108
Gene ID	1398
Background	The Crk-I and Crk-II forms differ in their biological activities. Crk-II has less transforming activity than Crk-I. Crk-II mediates attachment-induced MAPK8 activation, membrane ruffling and cell motility in a Rac-dependent manner. Involved in phagocytosis of apoptotic cells and cell motility via its interaction with DOCK1 and DOCK4. May regulate the EFNA5-EPHA3 signaling.



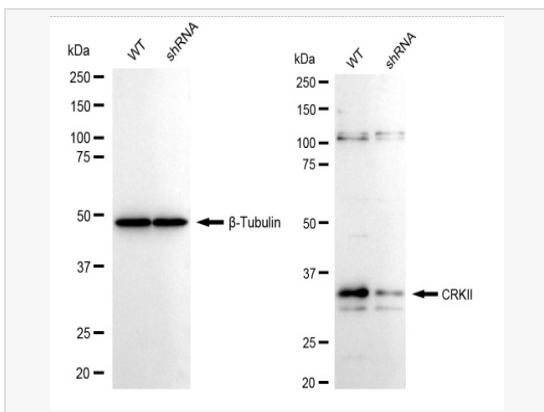
Flow cytometric analysis of CRKII expression in HepG2 cells using CRKII antibody (R020259, 1:2,000). Green, isotype control; red, CRKII.



Immunocytochemical staining of HepG2 cells with CRKII antibody (R020259, 1:1,000). Nuclei were stained blue with DAPI; CRKII was stained magenta with Alexa Fluor® 647. Images were taken using Leica stellaris 5. Protein abundance based on laser Intensity and smart gain: High. Scale bar: 20 μ m.



Western blotting analysis using CRKII antibody (R020259). Total cell lysates (30 μ g) from various cell lines were loaded and separated by SDS-PAGE. The blot was incubated with CRKII antibody (R020259, 1:5,000) and HRP-conjugated goat anti-rabbit secondary antibody (1:20,000) respectively. Image was developed using ECL Substrate Kit.



Western blotting analysis using CRKII antibody (R020259). CRKII expression in wild type (WT) and CRKII shRNA knockdown (KD) HeLa cells with 30 μ g of total cell lysates. β -Tubulin serves as a loading control. The blot was incubated with CRKII antibody (R020259, 1:5,000) and HRP-conjugated goat anti-rabbit secondary antibody (1:20,000) respectively. Image was developed using ECL Substrate Kit.