

[KD Validated] Anti-APP Rabbit mAb

Purified Recombinant Rabbit Monoclonal Antibody

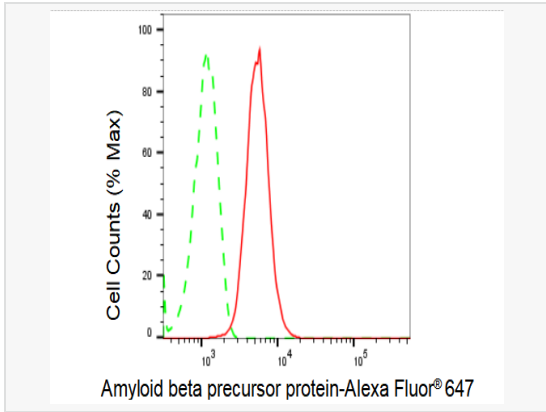
Catalog # R020255

Product Information

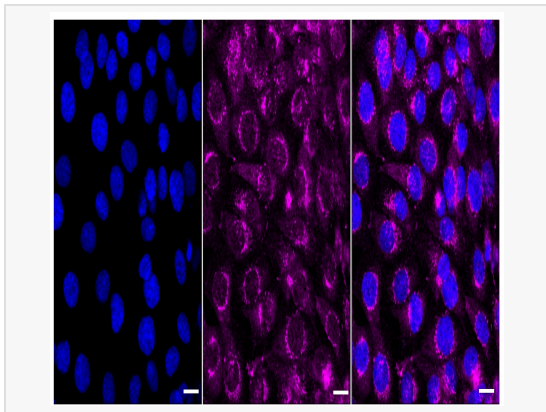
Application	WB, FC, IF (Cell)/ICC
Reactivity	Human, Mouse, Rat
Dilution	WB 1:1,000~1:5,000; FC 1:200~1:2,000; IF 1:100~1:1,000
Host	Rabbit
Clonality	Monoclonal
Clone No.	76L88M26
Isotype	IgG
Label	Unconjugated
Immunogen	A synthesized peptide derived from human Amyloid beta A4
Format	Affinity purified monoclonal antibody supplied in PBS with 0.02% sodium azide and 50% glycerol, pH 7.3.
Storage	Shipped on wet ice. Store at -20°C. Stable for 12 months from date of receipt. Aliquoting is unnecessary for -20°C storage.
Precautions	[KD Validated] Anti-APP Rabbit mAb [76L88M26] is for research use only and not for use in diagnostic or therapeutic procedures.

Protein Information

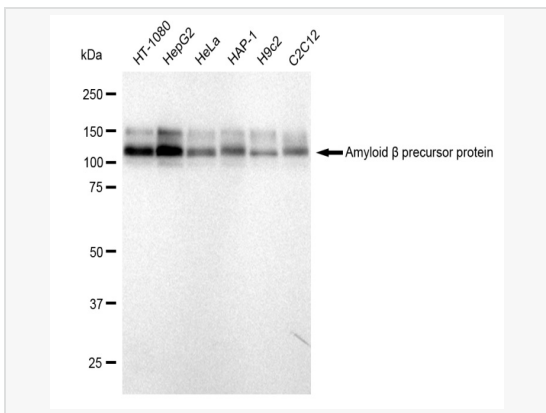
Synonyms	A4; AAA; ABETA; ABPP; AD1; AICD-50; AICD-57; AICD-59; AID(50); AID(57); AID(59); amyloid beta (A4) precursor protein; Amyloid beta A4 protein; CTFgamma ; PN 2;CD31; CVAP; APP.
Calculated MW	Calculated MW: 87 kDa, Observed MW: 110 kDa
Uniprot ID	P05067
Gene ID	351
Background	APP a cell surface receptor that influences neurite growth, neuronal adhesion and axonogenesis. Cleaved by secretases to form a number of peptides, some of which bind to the acetyltransferase complex Fe65/TIP60 to promote transcriptional activation.



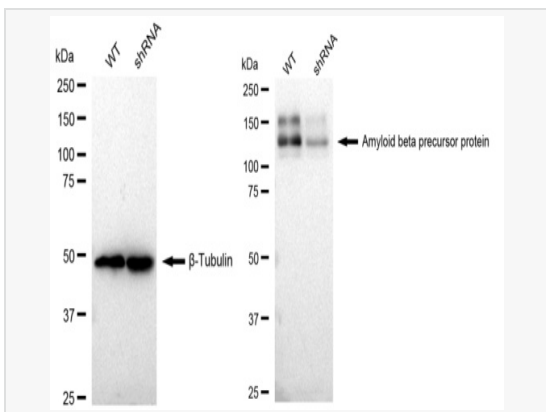
Flow cytometric analysis of Amyloid beta precursor protein expression in HepG2 cells using Amyloid beta precursor protein antibody (R020255, 1:2,000). Green, isotype control; red, Amyloid beta precursor protein.



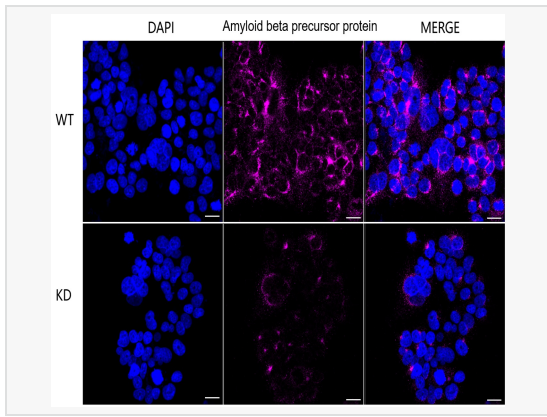
Immunocytochemical staining of HT-1080 cells with Amyloid beta precursor protein antibody (R020255, 1:1,000). Nuclei were stained blue with DAPI; Amyloid beta precursor protein was stained magenta with Alexa Fluor® 647. Images were taken using Leica stellaris 5. Protein abundance based on laser Intensity and smart gain: Medium. Scale bar: 20 µm.



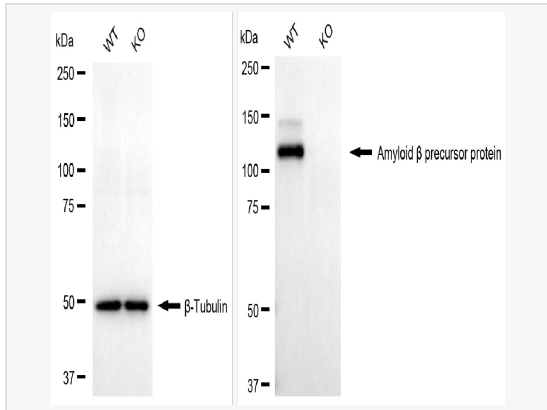
Western blotting analysis using Amyloid beta precursor protein antibody (R020255). Total cell lysates (30 µg) from various cell lines were loaded and separated by SDS-PAGE. The blot was incubated with Amyloid beta precursor protein antibody (R020255, 1:5,000) and HRP-conjugated goat anti-rabbit secondary antibody (1:20,000) respectively. Image was developed using ECL Substrate Kit.



Western blotting analysis using Amyloid beta precursor protein antibody (R020255). Amyloid beta precursor protein expression in wild type (WT) and amyloid beta precursor protein shRNA knockdown (KD) HeLa cells with 30 µg of total cell lysates. β-Tubulin serves as a loading control. The blot was incubated with Amyloid beta precursor protein antibody (R020255, 1:5,000) and HRP-conjugated goat anti-rabbit secondary antibody (1:20,000) respectively. Image was developed using ECL Substrate Kit.



Immunocytochemical staining of HeLa cells using Amyloid beta precursor protein antibody (R020255, 1:1,000), Top panel: wild-type (WT); Bottom panel: Amyloid beta precursor protein shRNA knockdown (KD). Nuclei were stained blue with DAPI; Amyloid beta precursor protein was stained magenta with Alexa Fluor® 647. Scale bar, 20 μ m. Permeabilization: Triton.



Western blotting analysis using amyloid beta precursor protein antibody (R020255). Amyloid beta precursor protein expression in wild type (WT) and amyloid beta precursor protein (APP) knockout (KO) 293T cells with 20 μ g of total cell lysates. β -Tubulin serves as a loading control. The blot was incubated with amyloid beta precursor protein antibody (R020255, 1:5,000) and HRP-conjugated goat anti-rabbit secondary antibody (1:20,000) respectively. Image was developed using ECL Substrate Kit.