

[KD Validated] Anti-STAT6 Rabbit mAb

Purified Recombinant Rabbit Monoclonal Antibody

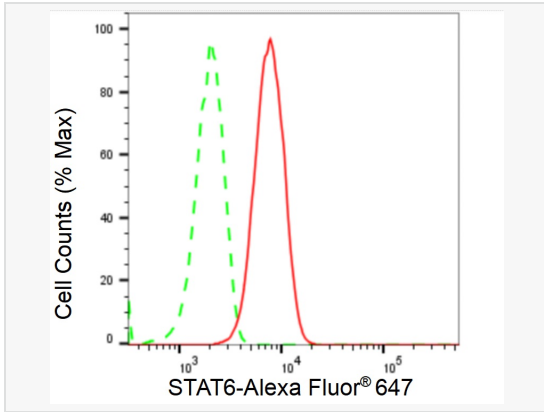
Catalog # R020246

Product Information

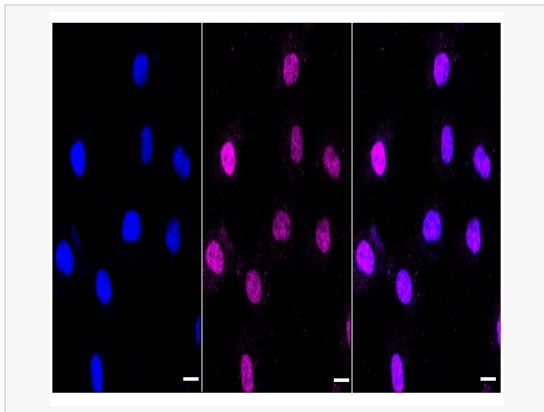
Application	WB, FC, IF (Cell)/ICC
Reactivity	Human
Dilution	WB 1:1,000~1:5,000; FC 1:200~1:2,000; IF 1:100~1:1,000
Host	Rabbit
Clonality	Monoclonal
Clone No.	48E40Q12
Isotype	IgG
Label	Unconjugated
Immunogen	A synthesized peptide derived from human STAT6
Format	Affinity purified monoclonal antibody supplied in PBS with 0.02% sodium azide and 50% glycerol, pH 7.3.
Storage	Shipped on wet ice. Store at -20°C. Stable for 12 months from date of receipt. Aliquoting is unnecessary for -20°C storage.
Precautions	[KD Validated] Anti-STAT6 Rabbit mAb [48E40Q12] is for research use only and not for use in diagnostic or therapeutic procedures.

Protein Information

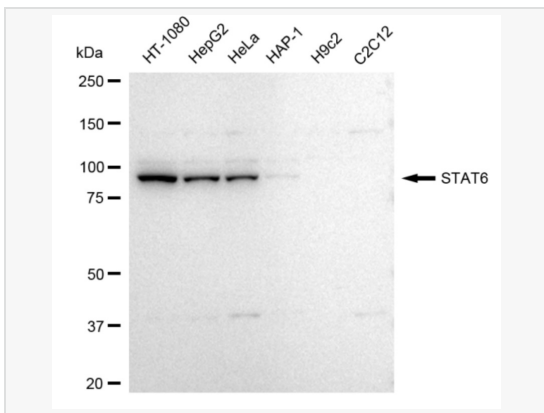
Synonyms	STAT6; Signal Transducer And Activator Of Transcription 6; IL-4-STAT; D12S1644; Signal Transducer And Activator Of Transcription 6, Interleukin-4 Induced; Transcription Factor IL-4 STAT; STAT, Interleukin4-Induced; EC 2.4.1.227; EC 2.7.7.6; IL-4 Stat; STAT6B; STAT6C.
Calculated MW	Calculated MW: 94 kDa, Observed MW: 94 kDa
Uniprot ID	P42226
Gene ID	6778
Background	STAT6 transcription factor of the STAT family. Plays a central role in IL4-mediated biological responses. Induces the expression of BCL2L1/BCL-X(L), which is responsible for the anti-apoptotic activity of IL4.



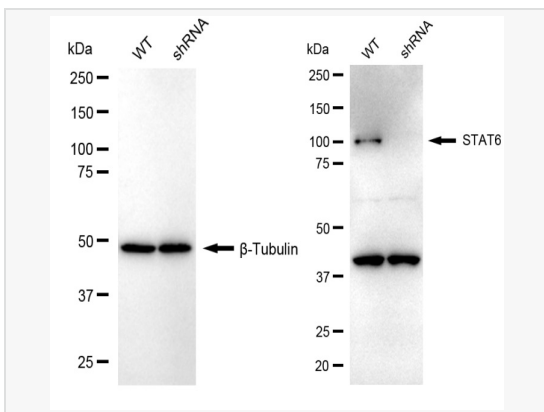
Flow cytometric analysis of STAT6 expression in HT-1080 cells using STAT6 antibody (R020246, 1:2,000). Green, isotype control; red, STAT6.



Immunocytochemical staining of HT-1080 cells with STAT6 antibody (R020246, 1:1,000). Nuclei were stained blue with DAPI; STAT6 was stained magenta with Alexa Fluor® 647. Images were taken using Leica stellaris 5. Protein abundance based on laser Intensity and smart gain: Medium. Scale bar: 20 µm.



Western blotting analysis using STAT6 antibody (R020246). Total cell lysates (30 µg) from various cell lines were loaded and separated by SDS-PAGE. The blot was incubated with STAT6 antibody (R020246, 1:5,000) and HRP-conjugated goat anti-rabbit secondary antibody (1:20,000) respectively. Image was developed using ECL Substrate Kit.



Western blotting analysis using STAT6 antibody (R020246). STAT6 expression in wild-type (WT) and STAT6 shRNA knockdown (KD) HeLa cells with 20 µg of total cell lysates. β-Tubulin serves as a loading control. The blot was incubated with STAT6 antibody (R020246, 1:5,000) and HRP-conjugated goat anti-rabbit secondary antibody (1:20,000) respectively. Image was developed using ECL Substrate Kit.