

[KD Validated] Anti-CSK Rabbit mAb

Purified Recombinant Rabbit Monoclonal Antibody

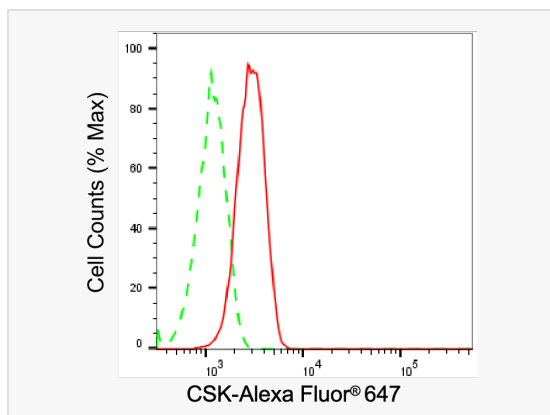
Catalog # R020243

Product Information

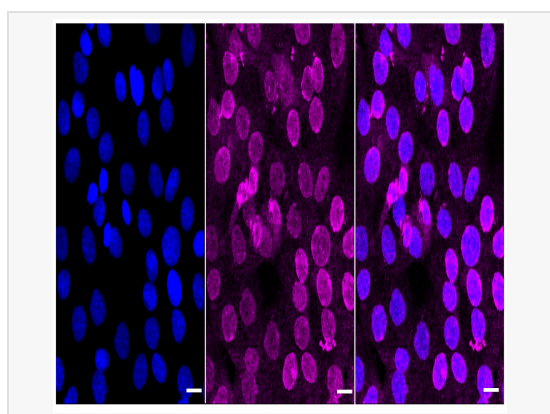
Application	WB, FC, IF (Cell)/ICC
Reactivity	Human, Mouse, Rat
Dilution	WB 1:1,000~1:5,000; FC 1:200~1:2,000; IF 1:100~1:1,000
Host	Rabbit
Clonality	Monoclonal
Clone No.	33M43L48
Isotype	IgG
Label	Unconjugated
Immunogen	A synthesized peptide derived from human CSK
Format	Affinity purified monoclonal antibody supplied in PBS with 0.02% sodium azide and 50% glycerol, pH 7.3.
Storage	Shipped on wet ice. Store at -20°C. Stable for 12 months from date of receipt. Aliquoting is unnecessary for -20°C storage.
Precautions	[KD Validated] Anti-CSK Rabbit mAb [33M43L48] is for research use only and not for use in diagnostic or therapeutic procedures.

Protein Information

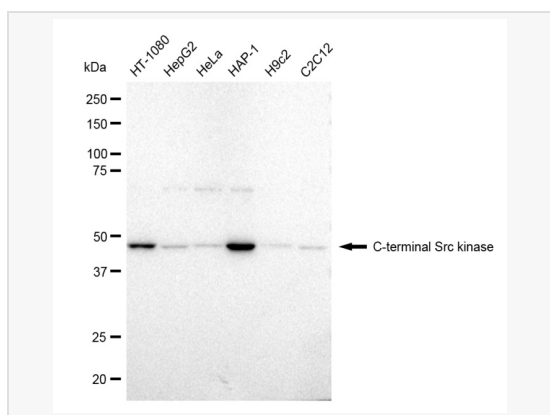
Synonyms	CSK; C-Terminal Src Kinase; CSK, Non-Receptor Tyrosine Kinase; Tyrosine-Protein Kinase CSK; Protein-Tyrosine Kinase CYL; C-Src Tyrosine Kinase; C-Src Kinase; EC 2.7.10.2; EC 2.7.10.
Calculated MW	Calculated MW: 51 kDa, Observed MW: 48 kDa
Uniprot ID	P41240
Gene ID	1445
Background	Specifically phosphorylates 'Tyr-504' on LCK, which acts as a negative regulatory site. Can also act on the LYN and FYN kinases.



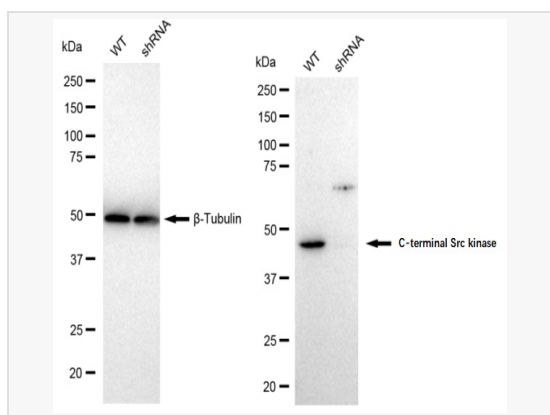
Flow cytometric analysis of CSK expression in HT-1080 cells using CSK antibody (R020243, 1:2,000). Green, isotype control; red, CSK.



Immunocytochemical staining of HT-1080 cells with C-terminal Src kinase antibody (R020243, 1:1,000). Nuclei were stained blue with DAPI; C-terminal Src kinase was stained magenta with Alexa Fluor® 647. Images were taken using Leica stellaris 5. Protein abundance based on laser Intensity and smart gain: Medium. Scale bar: 20 µm.



Western blotting analysis using C-terminal Src kinase antibody (R020243). Total cell lysates (30 µg) from various cell lines were loaded and separated by SDS-PAGE. The blot was incubated with C-terminal Src kinase antibody (R020243, 1:5,000) and HRP-conjugated goat anti-rabbit secondary antibody (1:20,000) respectively. Image was developed using ECL Substrate Kit.



Western blotting analysis using C-terminal Src kinase antibody (R020243). C-terminal Src kinase expression in wild type (WT) and C-terminal Src kinase shRNA knockdown (KD) HeLa cells with 30 µg of total cell lysates. β-Tubulin serves as a loading control. The blot was incubated with C-terminal Src kinase antibody (R020243, 1:5,000) and HRP-conjugated goat anti-rabbit secondary antibody (1:20,000) respectively. Image was developed using ECL Substrate Kit.