

[KD Validated] Anti-NUMB Rabbit mAb

Purified Recombinant Rabbit Monoclonal Antibody

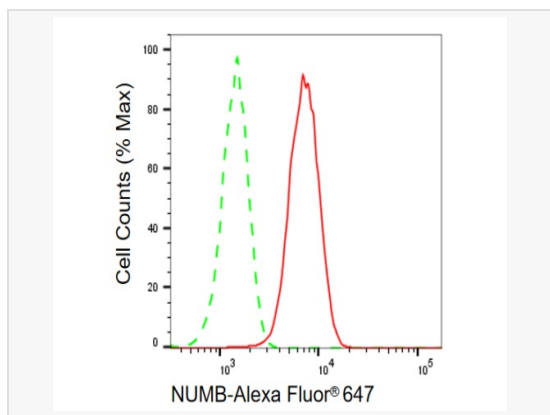
Catalog # R020240

Product Information

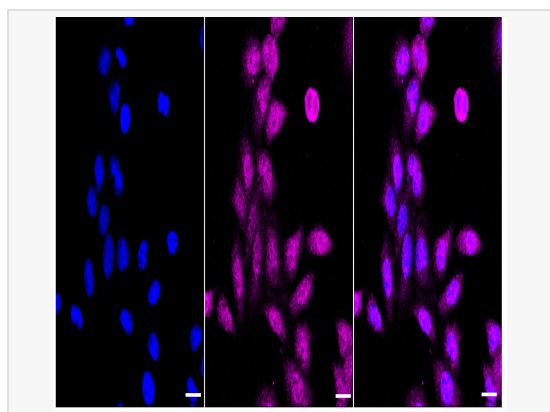
| | |
|-------------|--|
| Application | WB, FC, IF (Cell)/ICC |
| Reactivity | Human, Mouse, Rat |
| Dilution | WB 1:1,000~1:5,000; FC 1:200~1:2,000; IF 1:100~1:1,000 |
| Host | Rabbit |
| Clonality | Monoclonal |
| Clone No. | 61H40L78 |
| Isotype | IgG |
| Label | Unconjugated |
| Immunogen | A synthesized peptide derived from human NUMB |
| Format | Affinity purified monoclonal antibody supplied in PBS with 0.02% sodium azide and 50% glycerol, pH 7.3. |
| Storage | Shipped on wet ice. Store at -20°C. Stable for 12 months from date of receipt. Aliquoting is unnecessary for -20°C storage. |
| Precautions | [KD Validated] Anti-NUMB Rabbit mAb [61H40L78] is for research use only and not for use in diagnostic or therapeutic procedures. |

Protein Information

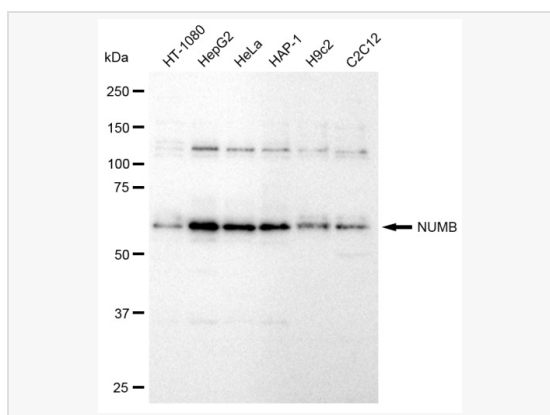
| | |
|-------------------|--|
| Synonyms | NUMB Endocytic Adaptor Protein; C14orf41; Protein Numb Homolog; H-Numb; Chromosome 14 Open Reading Frame 41; Numb (Drosophila) Homolog; Numb Homolog (Drosophila); Numb Homolog; Protein S171; C14_5527; S171. |
| Calculated MW | Calculated MW: 71 kDa, Observed MW: 71 kDa |
| Uniprot ID | P49757 |
| Gene ID | 8650 |
| Background | Numb acts as a negative regulator of Notch signaling by promoting ubiquitination and degradation of Notch. The protein is asymmetrically segregated into one daughter cell during cell division, producing two daughter cells with different responses to Notch signaling and different cell fates. The localization of Numb can also be regulated by G-protein coupled receptor (GPCR) and PKC signaling. |
| Cellular Location | Membrane. |



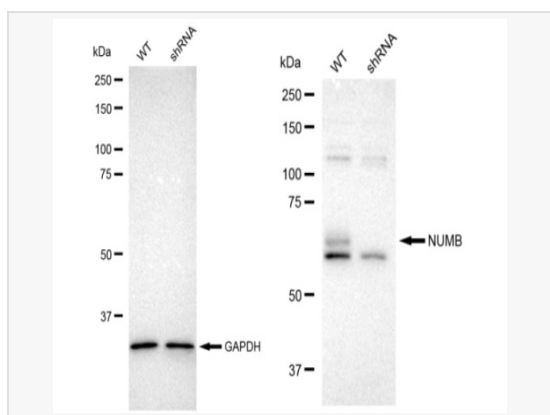
Flow cytometric analysis of NUMB expression in HepG2 cells using NUMB antibody (R020240, 1:2,000). Green, isotype control; red, NUMB.



Immunocytochemical staining of HepG2 cells with NUMB antibody (R020240, 1:1,000). Nuclei were stained blue with DAPI; NUMB was stained magenta with Alexa Fluor® 647. Images were taken using Leica stellaris 5. Protein abundance based on laser Intensity and smart gain: Medium. Scale bar: 20 µm.



Western blotting analysis using NUMB antibody (R020240). Total cell lysates (30 µg) from various cell lines were loaded and separated by SDS-PAGE. The blot was incubated with NUMB antibody (R020240, 1:5,000) and HRP-conjugated goat anti-rabbit secondary antibody (1:50,000) respectively. Image was developed using ECL Substrate Kit.



Western blotting analysis using NUMB antibody (R020240). NUMB expression in wild type (WT) and NUMB shRNA knockdown (KD) HT-1080 cells with 30 µg of total cell lysates. GAPDH serves as a loading control. The blot was incubated with NUMB antibody (R020240, 1:5,000) and HRP-conjugated goat anti-rabbit secondary antibody (1:50,000) respectively. Image was developed using ECL Substrate Kit.