

[KO Validated] Anti-BCL2L11 Rabbit mAb

Purified Recombinant Rabbit Monoclonal Antibody

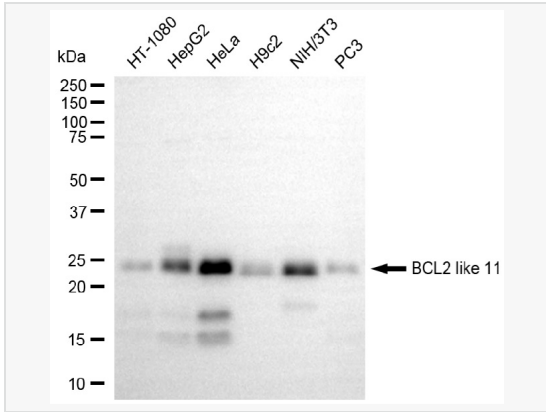
Catalog # R020225

Product Information

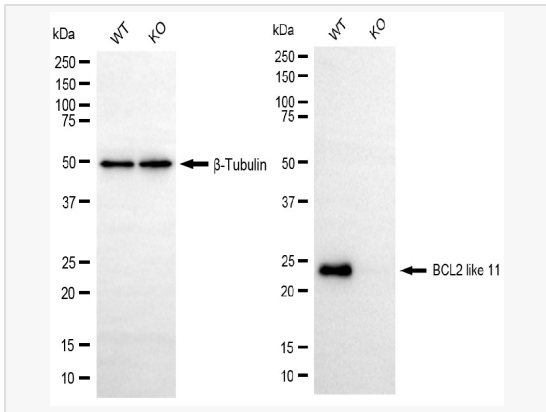
Application	WB, FC, IF (Cell)/ICC
Reactivity	Human, Mouse, Rat
Dilution	WB 1:1,000~1:5,000; FC 1:200~1:2,000; IF 1:100~1:1,000
Host	Rabbit
Clonality	Monoclonal
Clone No.	27T47R90
Isotype	IgG
Label	Unconjugated
Immunogen	A synthesized peptide derived from human Bim
Format	Affinity purified monoclonal antibody supplied in PBS with 0.02% sodium azide and 50% glycerol, pH 7.3.
Storage	Shipped on wet ice. Store at -20°C. Stable for 12 months from date of receipt. Aliquoting is unnecessary for -20°C storage.
Precautions	[KO Validated] Anti-BCL2L11 Rabbit mAb [27T47R90] is for research use only and not for use in diagnostic or therapeutic procedures.

Protein Information

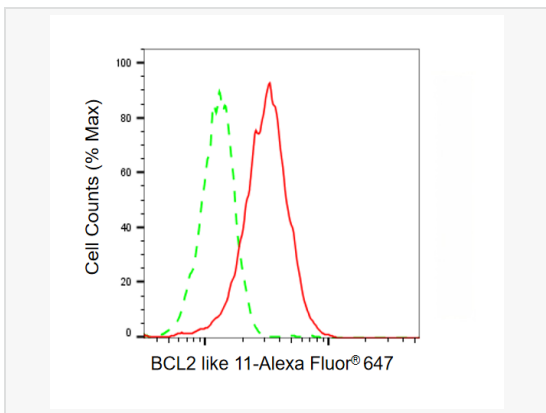
Synonyms	BCL2L11; BCL2 Like 11; BIM; BOD; BCL2-Like 11 (Apoptosis Facilitator); Bcl-2-Like Protein 11; BimEL; BimL; BimS; Bcl-2 Interacting Mediator Of Cell Death; Bcl2-Interacting Mediator Of Cell Death; Bcl-2-Related Ovarian Death Agonist; Bcl-2 Interacting Protein Bim; Bcl2-L-11; BAM.
Calculated MW	Calculated MW: 22 kDa, Observed MW: 22 kDa
Uniprot ID	O43521
Gene ID	10018
Background	Induces apoptosis and anoikis. Isoform BimL is more potent than isoform BimEL. Isoform Bim-alpha1, isoform Bim-alpha2 and isoform Bim-alpha3 induce apoptosis, although less potent than isoform BimEL, isoform BimL and isoform BimS. Isoform Bim-gamma induces apoptosis. Isoform Bim-alpha3 induces apoptosis possibly through a caspase-mediated pathway. Isoform BimAC and isoform BimABC lack the ability to induce apoptosis.



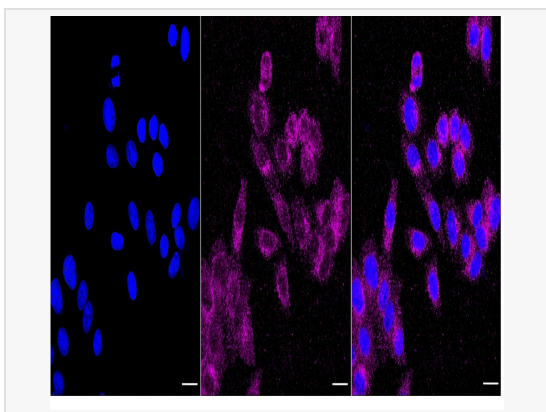
Western blotting analysis using BCL2 like 11 antibody (R020225). Total cell lysates (30 μ g) from various cell lines were loaded and separated by SDS-PAGE. The blot was incubated with BCL2 like 11 antibody (R020225, 1:5,000) and HRP-conjugated goat anti-rabbit secondary antibody (1:20,000) respectively. Image was developed using ECL Substrate Kit.



Western blotting analysis using BCL2 like 11 antibody (R020225). BCL2 like 11 expression in wild type (WT) and BCL2 like 11 (BCL2L11) knockout (KO) HSHC cells with 20 μ g of total cell lysates. β -Tubulin serves as a loading control. The blot was incubated with BCL2 like 11 antibody (R020225, 1:5,000) and HRP-conjugated goat anti-rabbit secondary antibody (1:20,000) respectively. Image was developed using ECL Substrate Kit.



Flow cytometric analysis of BCL2 like 11 expression in HepG2 cells using BCL2 like 11 antibody (R020225, 1:2,000). Green, isotype control; red, BCL2 like 11.



Immunocytochemical staining of HepG2 cells with BCL2 like 11 antibody (R020225, 1:1,000). Nuclei were stained blue with DAPI; BCL2 like 11 was stained magenta with Alexa Fluor[®] 647. Images were taken using Leica stellaris 5. Protein abundance based on laser Intensity and smart gain: Medium. Scale bar, 20 μ m.