

[KO Validated] Anti-CREB1 Mouse mAb

Purified Recombinant Rabbit Monoclonal Antibody

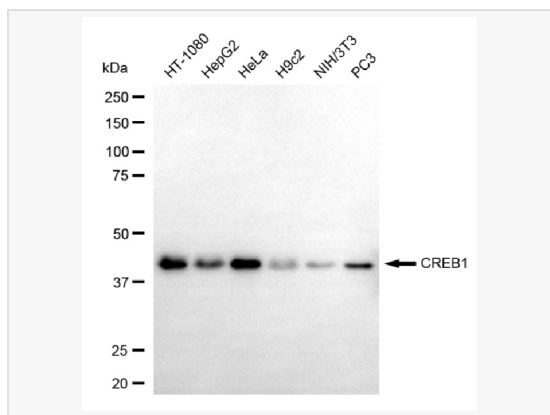
Catalog # M020222

Product Information

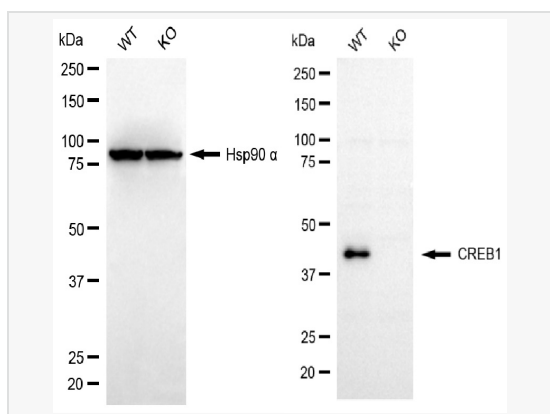
Application	WB, IF (Cell)/ICC
Reactivity	Human, Mouse, Rat
Dilution	WB 1:2,500~1:5,000; IF 1:100~1:1,000
Host	Mouse
Clonality	Monoclonal
Clone No.	73D16B47
Isotype	IgG
Label	Unconjugated
Immunogen	Recombinant protein of human CREB
Format	Affinity purified monoclonal antibody supplied in PBS with 0.02% sodium azide and 50% glycerol, pH 7.3.
Storage	Shipped on wet ice. Store at -20°C. Stable for 12 months from date of receipt. Aliquoting is unnecessary for -20°C storage.
Precautions	[KO Validated] Anti-CREB1 Mouse mAb [73D16B47] is for research use only and not for use in diagnostic or therapeutic procedures.

Protein Information

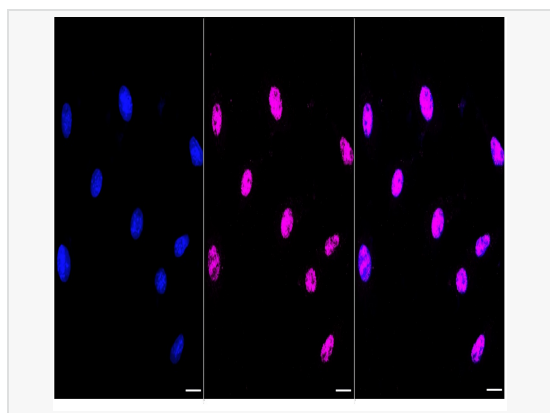
Synonyms	CREB1; CAMP Responsive Element Binding Protein 1; Cyclic AMP-Responsive Element-Binding Protein 1; CREB-1; Cyclic Adenosine 3',5'-Monophosphate Response Element-Binding Protein CREB; Cyclic Adenosine 3',5'-Monophosphate Response Element Binding Protein; CAMP-Responsive Element-Binding Protein 1; CAMP-Response Element-Binding Protein-1; Active Transcription Factor CREB; Transactivator Protein; CREB.
Calculated MW	Calculated MW: 35 kDa, Observed MW: 43 kDa
Uniprot ID	P16220
Gene ID	1385
Background	This gene encodes a transcription factor that is a member of the leucine zipper family of DNA binding proteins. This protein binds as a homodimer to the cAMP-responsive element, an octameric palindrome.



Western blotting analysis using CREB1 antibody (M020222). Total cell lysates (30 μ g) from various cell lines were loaded and separated by SDS-PAGE. The blot was incubated with CREB1 antibody (M020222, 1:5,000) and HRP-conjugated goat anti-mouse secondary antibody (1:20,000) respectively. Image was developed using ECL Substrate Kit. CREB1, cAMP responsive element binding protein 1.



Western blotting analysis using CREB1 antibody (M020222). CREB1 expression in wild type (WT) and CREB1 knockout (KO) 293T cells with 20 μ g of total cell lysates. Hsp90 α serves as a loading control. The blot was incubated with CREB1 antibody (M020222, 1:5,000) and HRP-conjugated goat anti-rabbit secondary antibody (1:20,000) respectively. Image was developed using ECL Substrate Kit.



Immunocytochemical staining of C2C12 cells with CREB1 antibody (M020222, 1:1,000). Nuclei were stained blue with DAPI; CREB1 was stained magenta with Alexa Fluor[®] 647. Images were taken using Leica stellaris 5. Protein abundance based on laser Intensity and smart gain: Medium. Scale bar, 20 μ m.