

[KO Validated] Anti-CAV1 Rabbit mAb

Purified Recombinant Rabbit Monoclonal Antibody

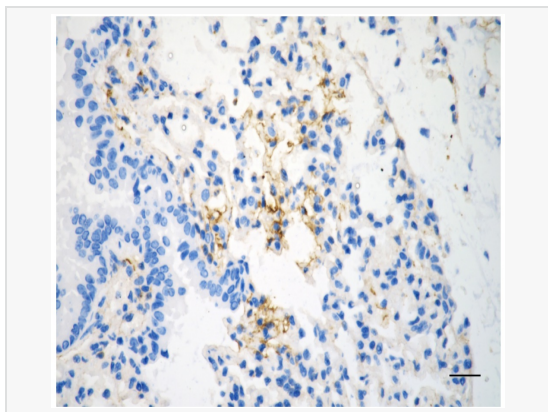
Catalog # R020217

Product Information

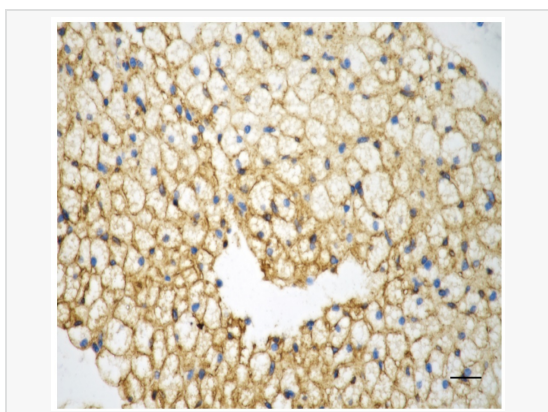
Application	WB, IHC-P/IF (Tissue-P)
Reactivity	Human, Mouse
Dilution	WB 1:1,000~1:5,000; IHC-P 1:100~1:200
Host	Rabbit
Clonality	Monoclonal
Clone No.	84D23D56
Isotype	IgG
Label	Unconjugated
Immunogen	A synthesized peptide derived from human Caveolin-1
Format	Affinity purified monoclonal antibody supplied in PBS with 0.02% sodium azide and 50% glycerol, pH 7.3.
Storage	Shipped on wet ice. Store at -20°C. Stable for 12 months from date of receipt. Aliquoting is unnecessary for -20°C storage.
Precautions	[KO Validated] Anti-CAV1 Rabbit mAb [84D23D56] is for research use only and not for use in diagnostic or therapeutic procedures.

Protein Information

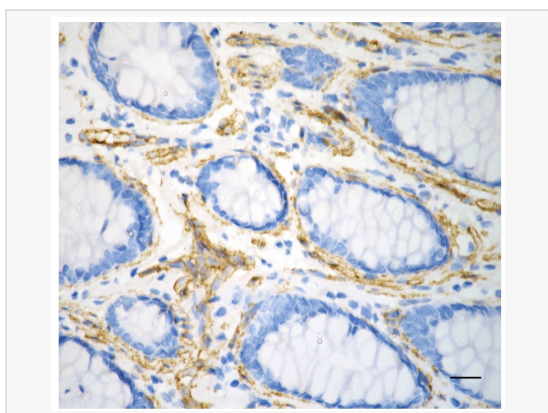
Synonyms	CAV1; Caveolin 1; Caveolin 1, Caveolae Protein, 22kDa; Caveolin-1; CAV; Caveolin 1, Caveolae Protein, 22kD; Cell Growth-Inhibiting Protein 32; MSTP085; BSCL3; LCCNS; VIP21; CGL3; PPH3.
Calculated MW	Calculated MW: 20 kDa, Observed MW: 20,24 kDa
Uniprot ID	Q03135
Gene ID	857
Background	Caveolin-1 may act as a scaffolding protein within caveolar membranes. Interacts directly with G-protein alpha subunits and can functionally regulate their activity (By similarity). Involved in the costimulatory signal essential for T-cell receptor (TCR)-mediated T-cell activation. Its binding to DPP4 induces T-cell proliferation and NF-kappa-B activation in a T-cell receptor/CD3-dependent manner. Recruits CTNNB1 to caveolar membranes and may regulate CTNNB1-mediated signaling through the Wnt pathway.



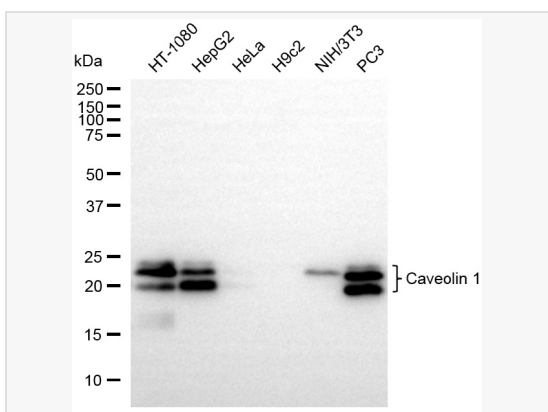
Immunohistochemistry was performed on paraffin-embedded mouse lung using caveolin 1 antibody (R020217, 1:200). Antigen retrieval was done in sodium citrate buffer (pH 6.0). DAB was used for detection, with hematoxylin counterstaining. Images were acquired using a Nikon Ci-L Plus microscope (40× objective). Scale bar: 25 μ m.



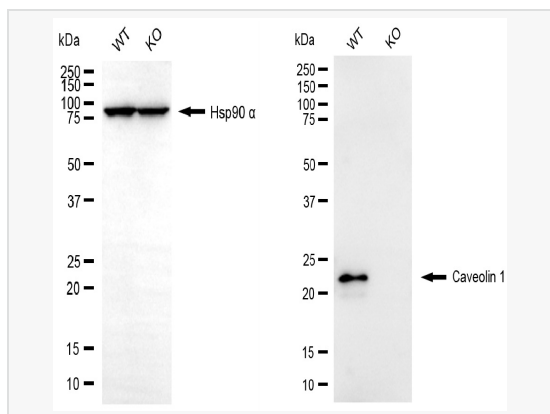
Immunohistochemistry was performed on paraffin-embedded mouse brown adipose tissue using caveolin 1 antibody (R020217, 1:200). Antigen retrieval was done in sodium citrate buffer (pH 6.0). DAB was used for detection, with hematoxylin counterstaining. Images were acquired using a Nikon Ci-L Plus microscope (40× objective). Scale bar: 25 μ m.



Immunohistochemistry was performed on paraffin-embedded human sigmoid colon carcinoma using caveolin 1 antibody (R020217, 1:200). Antigen retrieval was done in sodium citrate buffer (pH 6.0). DAB was used for detection, with hematoxylin counterstaining. Images were acquired using a Nikon Ci-L Plus microscope (40× objective). Scale bar: 25 μ m.



Western blotting analysis using Caveolin 1 antibody (R020217). Total cell lysates (5 μ g) from various cell lines were loaded and separated by SDS-PAGE. The blot was incubated with Caveolin 1 antibody (R020217, 1:5,000) and HRP-conjugated goat anti-rabbit secondary antibody (1:20,000) respectively. Image was developed using ECL Substrate Kit.



Western blotting analysis using caveolin 1 antibody (R020217). Caveolin 1 expression in wild-type (WT) and caveolin 1 (CAV1) knockout (KO) 293T cells with 30 μ g of total cell lysates. Hsp90 α serves as a loading control. The blot was incubated with caveolin 1 antibody (R020217, 1:5,000) and HRP-conjugated goat anti-rabbit secondary antibody (1:20,000) respectively. Image was developed using ECL Substrate Kit.