

[KO Validated] Anti-YWHAB Rabbit mAb

Purified Recombinant Rabbit Monoclonal Antibody

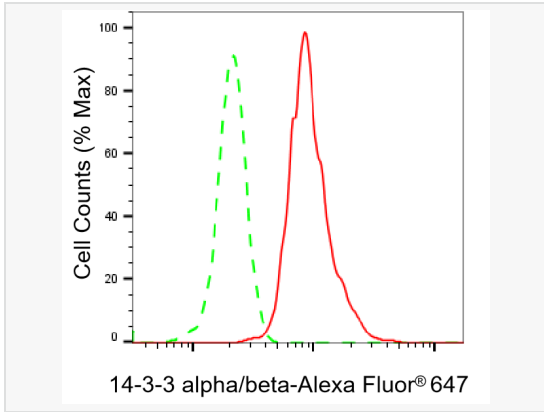
Catalog # R020210

Product Information

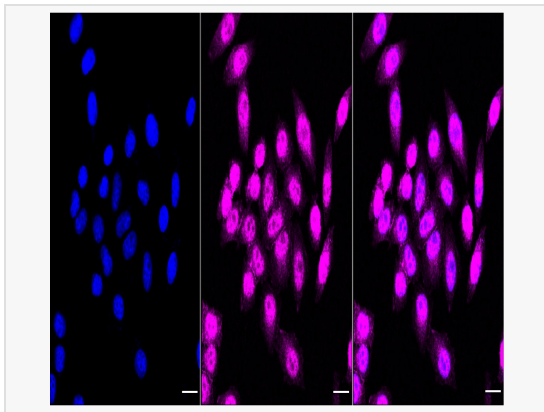
Application	WB, FC, IF (Cell)/ICC
Reactivity	Human, Mouse, Rat
Dilution	WB 1:1,000~1:5,000; FC 1:200~1:2,000; IF 1:100~1:1,000
Host	Rabbit
Clonality	Monoclonal
Clone No.	38T99R70
Isotype	IgG
Label	Unconjugated
Immunogen	A synthesized peptide derived from human 14-3-3 alpha + beta
Format	Affinity purified monoclonal antibody supplied in PBS with 0.02% sodium azide and 50% glycerol, pH 7.3.
Storage	Shipped on wet ice. Store at -20°C. Stable for 12 months from date of receipt. Aliquoting is unnecessary for -20°C storage.
Precautions	[KO Validated] Anti-YWHAB Rabbit mAb [38T99R70] is for research use only and not for use in diagnostic or therapeutic procedures.

Protein Information

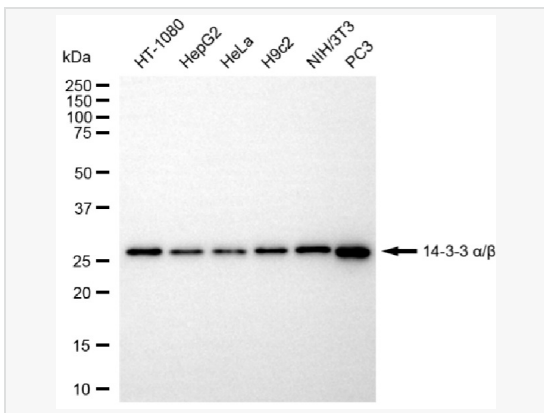
Synonyms	YWHAB; Tyrosine 3-Monooxygenase/Tryptophan 5-Monooxygenase Activation Protein Beta; Tyrosine 3-Monooxygenase/Tryptophan 5-Monooxygenase Activation Protein, Alpha Polypeptide; Tyrosine 3-Monooxygenase/Tryptophan 5-Monooxygenase Activation Protein, Beta Polypeptide; 14-3-3 Protein Beta/Alpha; 14-3-3 Alpha; Protein 1054; KCIP-1; YWHAA; Protein Kinase C Inhibitor Protein-1; Protein Kinase C Inhibitor Protein 1; Epididymis Secretory Protein Li 1; 14-3-3 Beta; HEL-S-1; GW128; HS1.
Calculated MW	Calculated MW: 28 kDa, Observed MW: 28 kDa
Uniprot ID	P31946
Gene ID	7529
Background	Adapter protein implicated in the regulation of a large spectrum of both general and specialized signaling pathways. Binds to a large number of partners, usually by recognition of a phosphoserine or phosphothreonine motif. Binding generally results in the modulation of the activity of the binding partner. Negative regulator of osteogenesis.



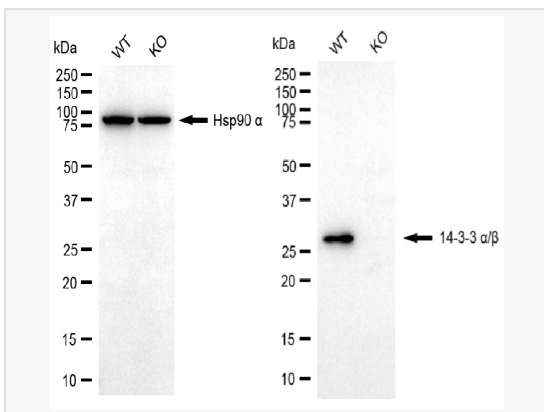
Flow cytometric analysis of 14-3-3 alpha/beta expression in HepG2 cells using 14-3-3 alpha/beta antibody (R020210, 1:2,000). Green, isotype control; red, 14-3-3 alpha/beta.



Immunocytochemical staining of HepG2 cells with 14-3-3 alpha/beta antibody (R020210, 1:1,000). Nuclei were stained blue with DAPI; 14-3-3 alpha/beta was stained magenta with Alexa Fluor® 647. Images were taken using Leica stellaris 5. Protein abundance based on laser Intensity and smart gain: Medium. Scale bar, 20 μ m.



Western blotting analysis using 14-3-3 alpha/beta antibody (R020210). Total cell lysates (30 μ g) from various cell lines were loaded and separated by SDS-PAGE. The blot was incubated with 14-3-3 alpha/beta antibody (R020210, 1:5,000) and HRP-conjugated goat anti-rabbit secondary antibody (1:20,000) respectively. Image was developed using ECL Substrate Kit.



Western blotting analysis using 14-3-3 alpha/beta antibody (R020210). 14-3-3 alpha/beta expression in wild-type (WT) and YWHAB knockout (KO) HSHC cells with 20 μ g of total cell lysates. Hsp90 α serves as a loading control. The blot was incubated with 14-3-3 alpha/beta antibody (R020210, 1:5,000) and HRP-conjugated goat anti-rabbit secondary antibody (1:20,000) respectively. Image was developed using ECL Substrate Kit.