

## [KO Validated] Anti-DIABLO Rabbit mAb

Purified Recombinant Rabbit Monoclonal Antibody

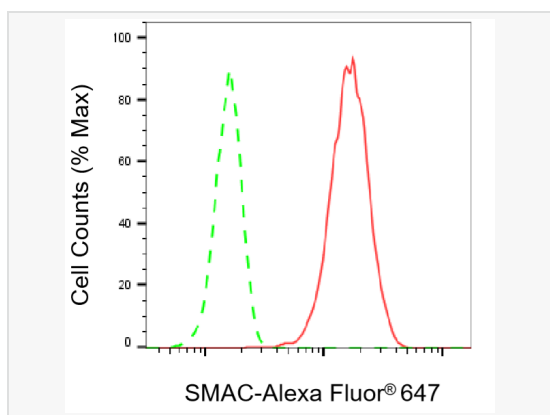
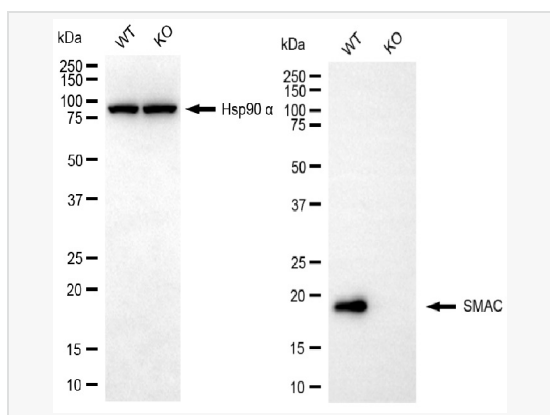
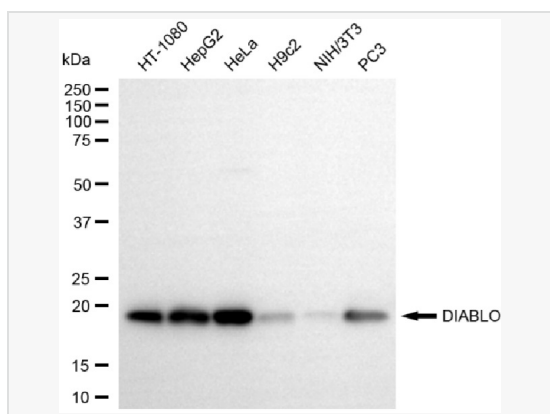
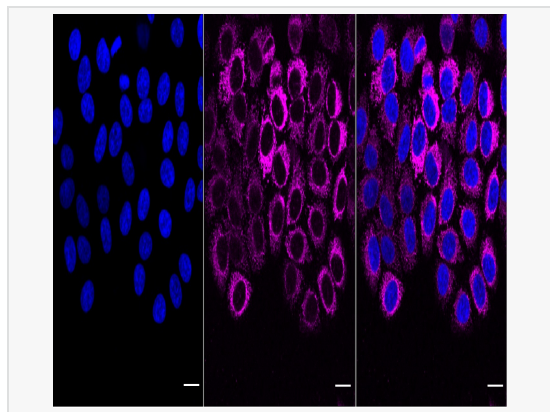
Catalog # R020209

### Product Information

Application	WB, FC, IF (Cell)/ICC
Reactivity	Human, Mouse, Rat
Dilution	WB 1:1,000~1:5,000; FC 1:200~1:2,000; IF 1:100~1:1,000
Host	Rabbit
Clonality	Monoclonal
Clone No.	36J03Q61
Isotype	IgG
Label	Unconjugated
Immunogen	A synthesized peptide derived from human Smac/Diablo
Format	Affinity purified monoclonal antibody supplied in PBS with 0.02% sodium azide and 50% glycerol, pH 7.3.
Storage	Shipped on wet ice. Store at -20°C. Stable for 12 months from date of receipt. Aliquoting is unnecessary for -20°C storage.
Precautions	[KO Validated] Anti-DIABLO Rabbit mAb [36J03Q61] is for research use only and not for use in diagnostic or therapeutic procedures.

### Protein Information

Synonyms	Diablo; IAP-Binding Mitochondrial Protein; DFNA64; Second Mitochondria-Derived Activator Of Caspase; Diablo Homolog; Mitochondrial; SMAC; Smac; Direct IAP-Binding Protein With Low PI.
Calculated MW	Calculated MW: 27 kDa; Observed MW: 21 kDa
Uniprot ID	Q9NR28
Gene ID	56616
Background	Smac/Diablo is a 21 kDa mammalian mitochondrial protein that functions as a regulatory component during apoptosis. Upon mitochondrial stress, Smac/Diablo is released from mitochondria and competes with caspases for binding of IAPs (inhibitor of apoptosis proteins). The interaction of Smac/Diablo with IAPs relieves the inhibitory effect of the IAPs on caspases.



Immunocytochemical staining of HepG2 cells with SMAC antibody (R020209, 1:1,000). Nuclei were stained blue with DAPI; SMAC was stained magenta with Alexa Fluor® 647. Images were taken using Leica stellaris 5. Protein abundance based on laser Intensity and smart gain: High. Scale bar, 20 µm.

Western blotting analysis using DIABLO antibody (R020209). Total cell lysates (30 µg) from various cell lines were loaded and separated by SDS-PAGE. The blot was incubated with DIABLO antibody (R020209, 1:5,000) and HRP-conjugated goat anti-rabbit secondary antibody (1:20,000) respectively. Image was developed using ECL Substrate Kit.

Western blotting analysis using SMAC antibody (R020209). SMAC expression in wild-type (WT) and DIABLO knockout (KO) 293T cells with 20 µg of total cell lysates. Hsp90 α serves as a loading control. The blot was incubated with SMAC antibody (R020209, 1:5,000) and HRP-conjugated goat anti-rabbit secondary antibody (1:20,000) respectively. Image was developed using ECL Substrate Kit.

Flow cytometric analysis of SMAC expression in HepG2 cells using SMAC antibody (R020209, 1:2,000). Green, isotype control; red, SMAC.