

[KO Validated] Anti-CDKN2A Rabbit mAb

Purified Recombinant Rabbit Monoclonal Antibody

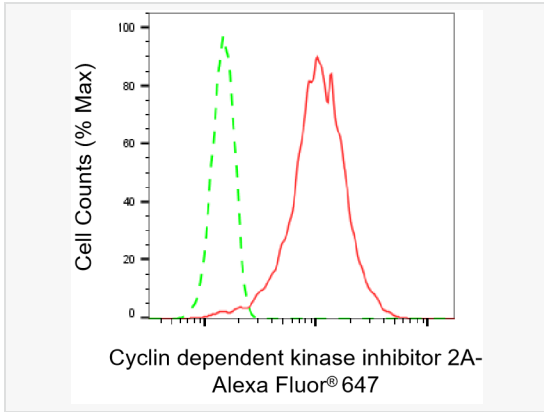
Catalog # R020208

Product Information

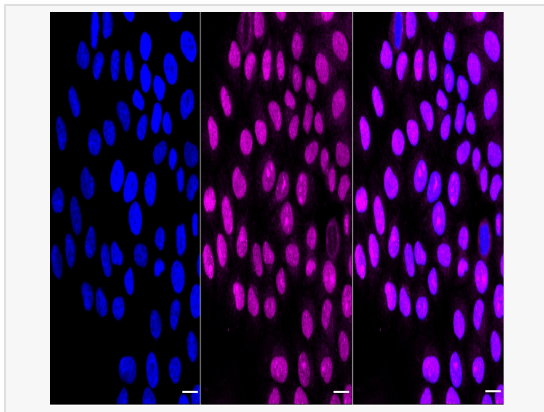
Application	WB, FC, IF (Cell)/ICC
Reactivity	Human
Dilution	WB 1:1,000~1:5,000; FC 1:200~1:2,000; IF 1:100~1:1,000
Host	Rabbit
Clonality	Monoclonal
Clone No.	91A16M62
Isotype	IgG
Label	Unconjugated
Immunogen	A synthesized peptide derived from human p16 INK
Format	Affinity purified monoclonal antibody supplied in PBS with 0.02% sodium azide and 50% glycerol, pH 7.3.
Storage	Shipped on wet ice. Store at -20°C. Stable for 12 months from date of receipt. Aliquoting is unnecessary for -20°C storage.
Precautions	[KO Validated] Anti-CDKN2A Rabbit mAb [91A16M62] is for research use only and not for use in diagnostic or therapeutic procedures.

Protein Information

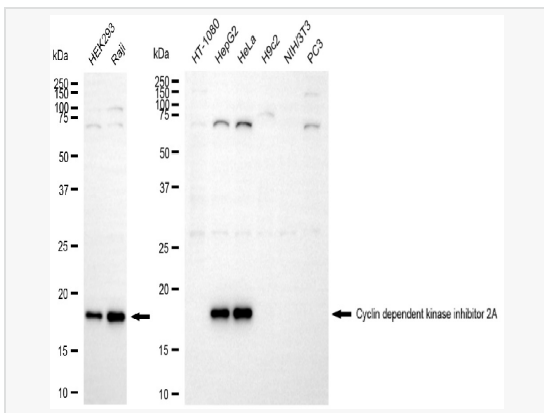
Synonyms	CDKN2A; Cyclin Dependent Kinase Inhibitor 2A; P14ARF; CDK4I; MTS1; ARF; Cyclin-Dependent Kinase 4 Inhibitor A; P16-INK4A; P16INK4A; CDKN2; CMM2; INK4; P16; P19; P14; MLM; Cyclin-Dependent Kinase Inhibitor 2A (Melanoma, P16, Inhibits CDK4); Cyclin-Dependent Kinase Inhibitor 2A; Multiple Tumour Suppressor 1; Multiple Tumor Suppressor 1; CDKN2A/ARF Intron 2 LncRNA; Alternative Reading Frame; Inhibitor Of Cdk4 A; P19ARF; INK4A; MTS-1; CAI2; Cell Cycle; Negative Regulator Beta; P19 Alternate Open Reading Frame; P14 Alternate Open Reading Frame; CDK4 Inhibitor P16-INK4; Tumor Suppressor ARF; P16-INK4a; P16INK4a; P16-INK4; P16INK4; P19Arf; INK4a; TP16.
Calculated MW	Calculated MW: 17 kDa; Observed MW: 17 kDa
Uniprot ID	P42771
Gene ID	1029
Background	p16-INK4A a cell-cycle regulatory protein that Interacts with CDK4 and CDK6, inhibiting their ability to interact with cyclins D. Inhibits the phosphorylation of the retinoblastoma protein by CDK4 or CDK6. Four alternatively spliced isoforms have been reported.



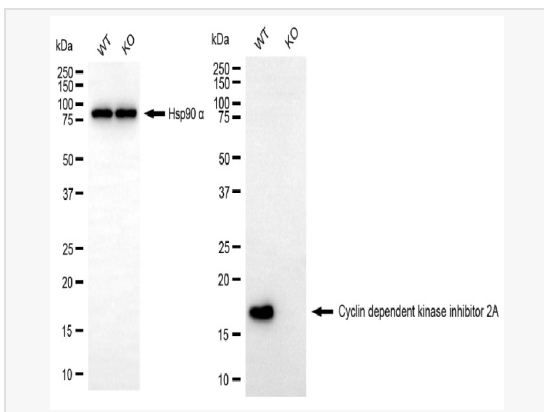
Flow cytometric analysis of Cyclin dependent kinase inhibitor 2A expression in HepG2 cells using Cyclin dependent kinase inhibitor 2A antibody (R020208, 1:2,000). Green, isotype control; red, Cyclin dependent kinase inhibitor 2A.



Immunocytochemical staining of HepG2 cells with Cyclin dependent kinase inhibitor 2A antibody (R020208, 1:1,000). Nuclei were stained blue with DAPI; Cyclin dependent kinase inhibitor 2A was stained magenta with Alexa Fluor® 647. Images were taken using Leica stellaris 5. Protein abundance based on laser Intensity and smart gain: High. Scale bar, 20 µm.



Western blotting analysis using cyclin dependent kinase inhibitor 2A antibody (R020208). Total cell lysates (30 µg) from various cell lines were loaded and separated by SDS-PAGE. The blot was incubated with cyclin dependent kinase inhibitor 2A antibody (R020208, 1:5,000) and HRP-conjugated goat anti-rabbit secondary antibody (1:20,000) respectively. Image was developed using ECL Substrate Kit.



Western blotting analysis using cyclin dependent kinase inhibitor 2A antibody (R020208). Cyclin dependent kinase inhibitor 2A expression in wild-type (WT) and cyclin dependent kinase inhibitor 2A (CDKN2A) knockout (KO) 293T cells with 20 µg of total cell lysates. Hsp90 α serves as a loading control. The blot was incubated with cyclin dependent kinase inhibitor 2A antibody (R020208, 1:5,000) and HRP-conjugated goat anti-rabbit secondary antibody (1:20,000) respectively. Image was developed using ECL Substrate Kit.