

## [KO Validated] Anti-ELK1 Rabbit mAb

Purified Recombinant Rabbit Monoclonal Antibody

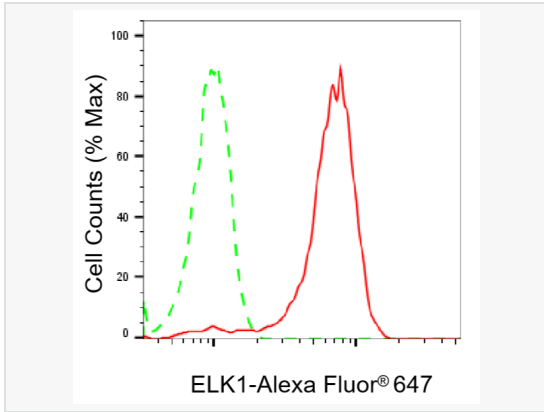
Catalog # R020179

### Product Information

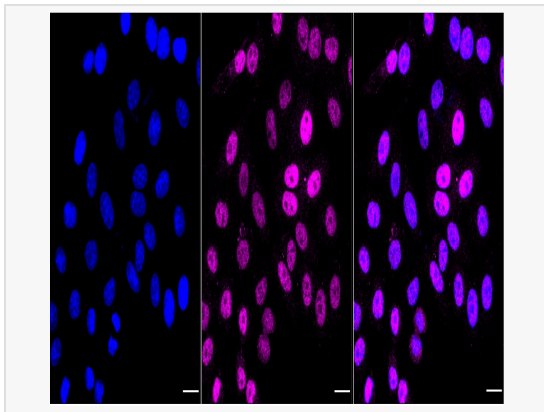
Application	WB, FC, IF (Cell)/ICC
Reactivity	Human, Mouse, Rat
Dilution	WB 1:1,000~1:5,000; FC 1:200~1:2,000; IF 1:100~1:1,000
Host	Rabbit
Clonality	Monoclonal
Clone No.	47C19R13
Isotype	IgG
Label	Unconjugated
Immunogen	A synthesized peptide derived from human ELK1
Format	Affinity purified monoclonal antibody supplied in PBS with 0.02% sodium azide and 50% glycerol, pH 7.3.
Storage	Shipped on wet ice. Store at -20°C. Stable for 12 months from date of receipt. Aliquoting is unnecessary for -20°C storage.
Precautions	[KO Validated] Anti-ELK1 Rabbit mAb [47C19R13] is for research use only and not for use in diagnostic or therapeutic procedures.

### Protein Information

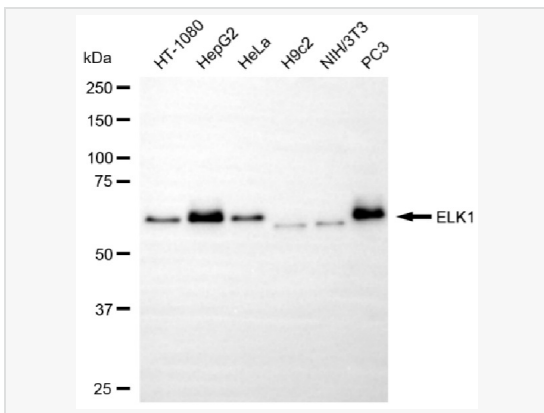
Synonyms	ELK1; ETS Transcription Factor ELK1; ELK1, Member Of ETS Oncogene Family; ETS Domain-Containing Protein Elk-1; Tyrosine Kinase (ELK1) Oncogene; ELK1, ETS Transcription Factor; ETS-Like Gene 1.
Calculated MW	Calculated MW: 45 kDa, Observed MW: 62 kDa
Uniprot ID	P19419
Gene ID	2002
Background	This gene is a member of the Ets family of transcription factors and of the ternary complex factor (TCF) subfamily. Proteins of the TCF subfamily form a ternary complex by binding to the the serum response factor and the serum response element in the promoter of the c-fos proto-oncogene. The protein encoded by this gene is a nuclear target for the ras-raf-MAPK signaling cascade. This gene produces multiple isoforms by using alternative translational start codons and by alternative splicing. Related pseudogenes have been identified on chromosomes 7 and 14. [provided by RefSeq, Mar 2012]
Cellular Location	Nucleus
Tissue Location	Lung and testis.



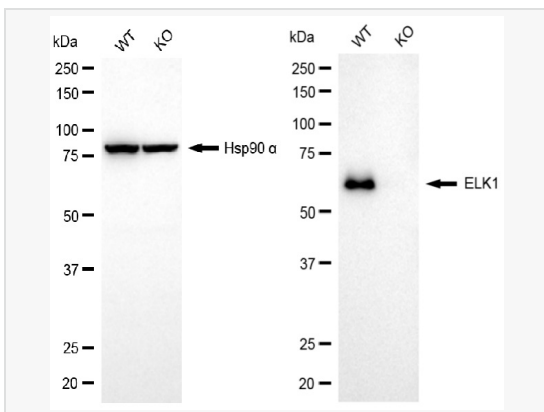
Flow cytometric analysis of ELK1 expression in HepG2 cells using ELK1 antibody (R020179, 1:2,000). Green, isotype control; red, ELK1.



Immunocytochemical staining of HepG2 cells with ELK1 antibody (R020179, 1:1,000). Nuclei were stained blue with DAPI; ELK1 was stained magenta with Alexa Fluor® 647. Images were taken using Leica stellaris 5. Protein abundance based on laser Intensity and smart gain: Medium. Scale bar, 20 µm.



Western blotting analysis using ELK1 antibody (R020179). Total cell lysates (30 µg) from various cell lines were loaded and separated by SDS-PAGE. The blot was incubated with ELK1 antibody (R020179, 1:5,000) and HRP-conjugated goat anti-rabbit secondary antibody (1:20,000) respectively. Image was developed using ECL Substrate Kit.



Western blotting analysis using ELK1 antibody (R020179). ELK1 expression in wild type (WT) and ELK1 knockout (KO) HSHC cells with 20 µg of total cell lysates. Hsp90 α serves as a loading control. The blot was incubated with ELK1 antibody (R020179, 1:5,000) and HRP-conjugated goat anti-rabbit secondary antibody (1:20,000) respectively. Image was developed using ECL Substrate Kit.