

[KO Validated] Anti-FYN Rabbit mAb

Purified Recombinant Rabbit Monoclonal Antibody

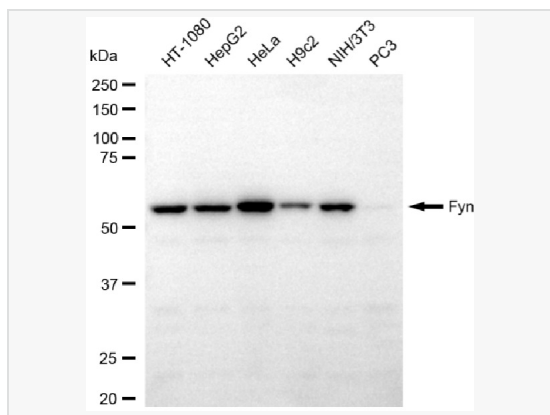
Catalog # R020176

Product Information

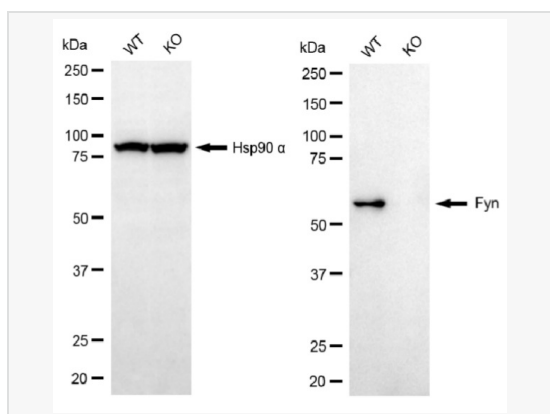
Application	WB, IF (Cell)/ICC
Reactivity	Human, Mouse, Rat
Dilution	WB 1:1,000~1:5,000; IF 1:100~1:1,000
Host	Rabbit
Clonality	Monoclonal
Clone No.	87A04H74
Isotype	IgG
Label	Unconjugated
Immunogen	A synthesized peptide derived from human Fyn
Format	Affinity purified monoclonal antibody supplied in PBS with 0.02% sodium azide and 50% glycerol, pH 7.3.
Storage	Shipped on wet ice. Store at -20°C. Stable for 12 months from date of receipt. Aliquoting is unnecessary for -20°C storage.
Precautions	[KO Validated] Anti-FYN Rabbit mAb [87A04H74] is for research use only and not for use in diagnostic or therapeutic procedures.

Protein Information

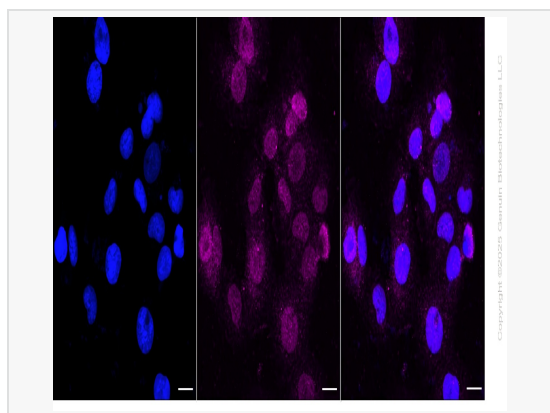
Synonyms	FYN; FYN Proto-Oncogene, Src Family Tyrosine Kinase; SLK; SYN; FYN Oncogene Related To SRC, FGR, YES; Tyrosine-Protein Kinase Fyn; Proto-Oncogene C-Fyn; Proto-Oncogene Syn; Src-Like Kinase; EC 2.7.10.2; MGC45350; OKT3-Induced Calcium Influx Regulator; Tyrosine Kinase P59fyn(T); Src/Yes-Related Novel; C-Syn Protooncogene; EC 2.7.10; P59-FYN; P59-Fyn.
Calculated MW	Calculated MW: 61 kDa; Observed MW: 61 kDa
Uniprot ID	P06241
Gene ID	2534
Background	Tyrosine-protein kinase implicated in the control of cell growth. Plays a role in the regulation of intracellular calcium levels, with isoform 2 showing the greater ability to mobilize cytoplasmic calcium in comparison to isoform 1. Required in brain development and mature brain function with important roles in the regulation of axon growth, axon guidance, and neurite extension.



Western blotting analysis using fyn antibody (R020176). Total cell lysates (30 μ g) from various cell lines were loaded and separated by SDS-PAGE. The blot was incubated with fyn antibody (R020176, 1:5,000) and HRP-conjugated goat anti-rabbit secondary antibody (1:20,000) respectively. Image was developed using ECL Substrate Kit.



Western blotting analysis using Fyn antibody (R020176). Fyn expression in wild-type (WT) and FYN knockout (KO) 293T cells with 20 μ g of total cell lysates. Hsp90 α serves as a loading control. The blot was incubated with Fyn antibody (R020176, 1:5,000) and HRP-conjugated goat anti-rabbit secondary antibody (1:20,000) respectively. Image was developed using ECL Substrate Kit.



Immunocytochemical staining of HT-1080 cells with Fyn antibody (R020176, 1:1,000). Nuclei were stained blue with DAPI; Fyn was stained magenta with Alexa Fluor[®] 647. Images were taken using Leica stellaris 5. Protein abundance based on laser Intensity and smart gain: Medium. Scale bar, 20 μ m.