

[KO Validated] Anti-RPSA Rabbit mAb

Purified Recombinant Rabbit Monoclonal Antibody

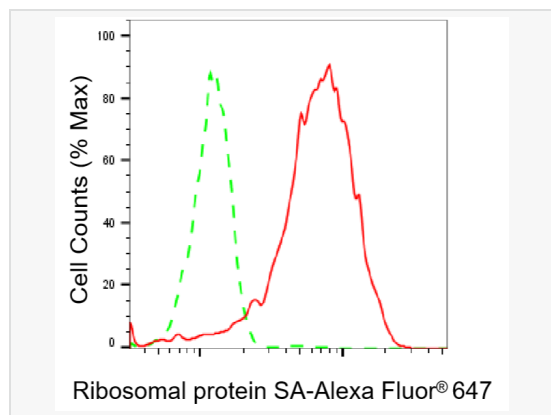
Catalog # R020175

Product Information

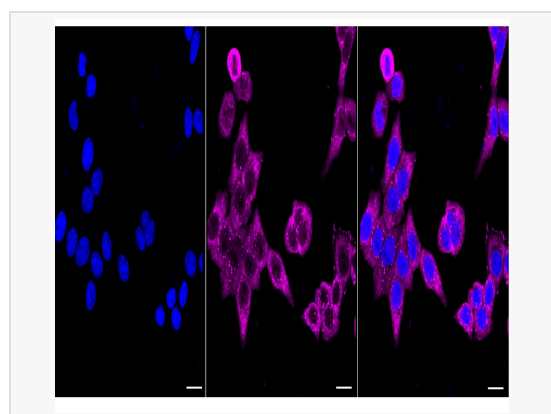
Application	WB, FC, IF (Cell)/ICC
Reactivity	Human, Mouse, Rat
Dilution	WB 1:1,000~1:5,000; FC 1:200~1:2,000; IF 1:100~1:1,000
Host	Rabbit
Clonality	Monoclonal
Clone No.	35F22A80
Isotype	IgG
Label	Unconjugated
Immunogen	A synthesized peptide derived from human 67kDa Laminin Receptor
Format	Affinity purified monoclonal antibody supplied in PBS with 0.02% sodium azide and 50% glycerol, pH 7.3.
Storage	Shipped on wet ice. Store at -20°C. Stable for 12 months from date of receipt. Aliquoting is unnecessary for -20°C storage.
Precautions	[KO Validated] Anti-RPSA Rabbit mAb [35F22A80] is for research use only and not for use in diagnostic or therapeutic procedures.

Protein Information

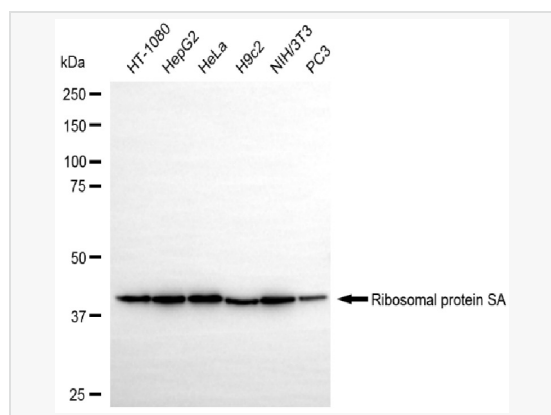
Synonyms	RPSA; Ribosomal Protein SA; 37LRP; LAMR1; LRP; P40; US2; SA; Laminin Receptor 1 (67kDa, Ribosomal Protein SA); Multidrug Resistance-Associated Protein MGr1-Ag; Colon Carcinoma Laminin-Binding Protein; Laminin-Binding Protein Precursor P40; Small Ribosomal Subunit Protein US2; 37/67 KDa Laminin Receptor; 40S Ribosomal Protein SA; 67 KDa Laminin Receptor; NEM/1CHD4; LBP/P40; LRP/LR; LAMBR; 67LR; LamR; 37 KDa Laminin Receptor Precursor; 37 KDa Laminin Receptor; Laminin Receptor 1; ICAS; LBP.
Calculated MW	Calculated MW: 33 kDa, Observed MW: 42 kDa
Uniprot ID	P08865
Gene ID	3921
Background	Required for the assembly and/or stability of the 40S ribosomal subunit. Required for the processing of the 20S rRNA-precursor to mature 18S rRNA in a late step of the maturation of 40S ribosomal subunits. Also functions as a cell surface receptor for laminin. Plays a role in cell adhesion to the basement membrane and in the consequent activation of signaling transduction pathways.



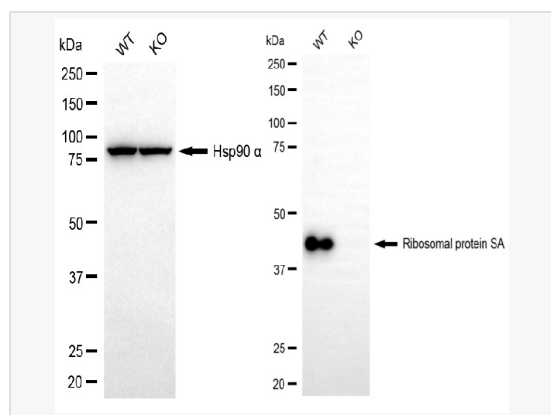
Flow cytometric analysis of Ribosomal protein SA expression in HepG2 cells using Ribosomal protein SA antibody (R020175, 1:2,000). Green, isotype control; red, Ribosomal protein SA.



Immunocytochemical staining of HepG2 cells with Ribosomal protein SA antibody (R020175, 1:1,000). Nuclei were stained blue with DAPI; Ribosomal protein SA was stained magenta with Alexa Fluor® 647. Images were taken using Leica stellaris 5. Protein abundance based on laser Intensity and smart gain: Medium. Scale bar, 20 µm.



Western blotting analysis using ribosomal protein SA antibody (R020175). Total cell lysates (30 µg) from various cell lines were loaded and separated by SDS-PAGE. The blot was incubated with ribosomal protein SA antibody (R020175, 1:5,000) and HRP-conjugated goat anti-rabbit secondary antibody (1:20,000) respectively. Image was developed using ECL Substrate Kit.



Western blotting analysis using ribosomal protein SA antibody (R020175). Ribosomal protein SA expression in wild type (WT) and ribosomal protein SA (RPSA) knockout (KO) HT-1080 cells with 20 µg of total cell lysates. Hsp90 α serves as a loading control. The blot was incubated with ribosomal protein SA antibody (R020175, 1:5,000) and HRP-conjugated goat anti-rabbit secondary antibody (1:20,000) respectively. Image was developed using ECL Substrate Kit.