

[KO Validated] Anti-ENDOG Rabbit mAb

Purified Recombinant Rabbit Monoclonal Antibody

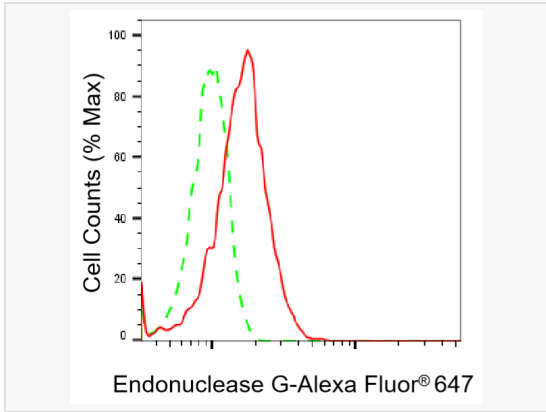
Catalog # R020173

Product Information

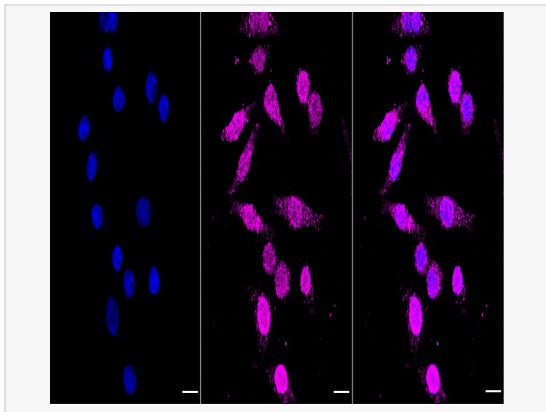
Application	WB, FC, IF (Cell)/ICC
Reactivity	Human, Mouse, Rat
Dilution	WB 1:1,000~1:5,000; FC 1:200~1:2,000; IF 1:100~1:1,000
Host	Rabbit
Clonality	Monoclonal
Clone No.	72M45R96
Isotype	IgG
Label	Unconjugated
Immunogen	A synthesized peptide derived from human Endo G
Format	Affinity purified monoclonal antibody supplied in PBS with 0.02% sodium azide and 50% glycerol, pH 7.3.
Storage	Shipped on wet ice. Store at -20°C. Stable for 12 months from date of receipt. Aliquoting is unnecessary for -20°C storage.
Precautions	[KO Validated] Anti-ENDOG Rabbit mAb [72M45R96] is for research use only and not for use in diagnostic or therapeutic procedures.

Protein Information

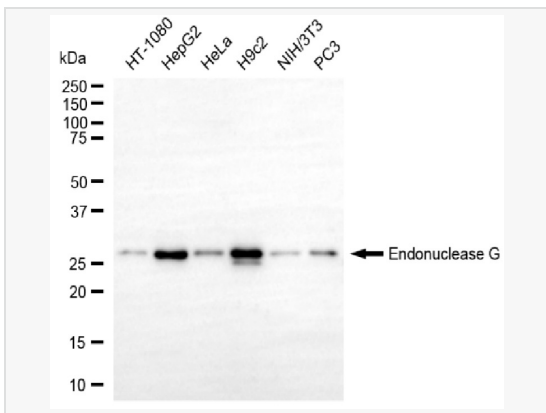
Synonyms	ENDO G; Endonuclease G; Endonuclease G, Mitochondrial; Endo G; Mitochondrial Endonuclease G; EC 3.1.30.-.
Calculated MW	Calculated MW: 33 kDa, Observed MW: 30 kDa
Uniprot ID	Q14249
Gene ID	2021
Background	The protein encoded by this gene is a nuclear encoded endonuclease that is localized in the mitochondrion. The encoded protein is widely distributed among animals and cleaves DNA at GC tracts. This protein is capable of generating the RNA primers required by DNA polymerase gamma to initiate replication of mitochondrial DNA.



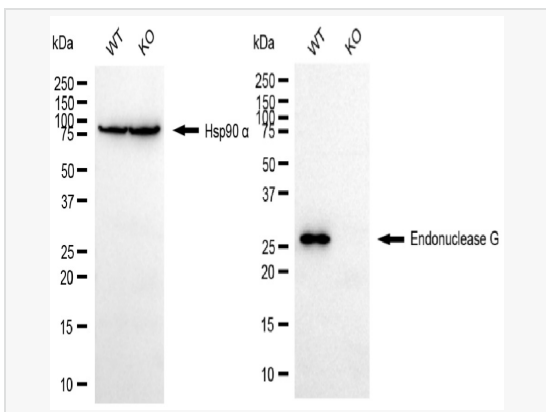
Flow cytometric analysis of Endonuclease G expression in HepG2 cells using Endonuclease G antibody (R020173, 1:2,000). Green, isotype control; red, Endonuclease G.



Immunocytochemical staining of HepG2 cells with Endonuclease G antibody (R020173, 1:1,000). Nuclei were stained blue with DAPI; Endonuclease G was stained magenta with Alexa Fluor® 647. Images were taken using Leica stellaris 5. Protein abundance based on laser Intensity and smart gain: Medium. Scale bar, 20 µm.



Western blotting analysis using endonuclease G antibody (R020173). Total cell lysates (30 µg) from various cell lines were loaded and separated by SDS-PAGE. The blot was incubated with endonuclease G antibody (R020173, 1:5,000) and HRP-conjugated goat anti-rabbit secondary antibody (1:20,000) respectively. Image was developed using ECL Substrate Kit.



Western blotting analysis using endonuclease G antibody (R020173). Endonuclease G expression in wild type (WT) and endonuclease G (ENDOG) knockout (KO) HSHC cells with 20 µg of total cell lysates. Hsp90 α serves as a loading control. The blot was incubated with endonuclease G antibody (R020173, 1:5,000) and HRP-conjugated goat anti-rabbit secondary antibody (1:20,000) respectively. Image was developed using ECL Substrate Kit.