

## [KO Validated] Anti-BAP1 Rabbit mAb

Purified Recombinant Rabbit Monoclonal Antibody

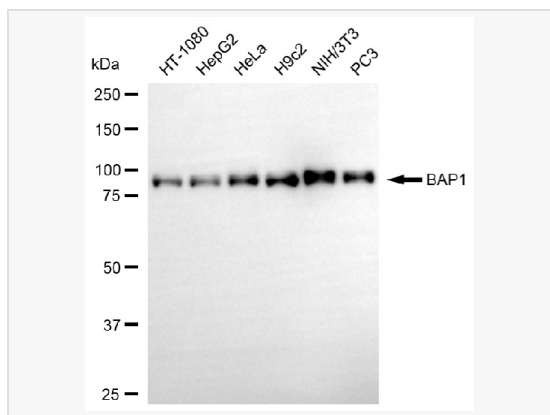
Catalog # R020148

### Product Information

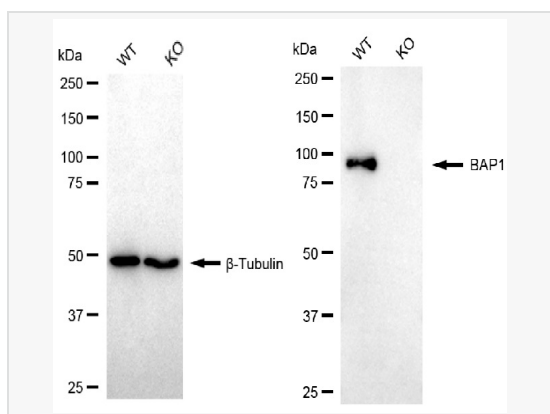
Application	WB
Reactivity	Human, Mouse, Rat
Dilution	WB 1:1,000~1:5,000
Host	Rabbit
Clonality	Monoclonal
Clone No.	37M71S60
Isotype	IgG
Label	Unconjugated
Immunogen	Recombinant protein of human BAP1
Format	Affinity purified monoclonal antibody supplied in PBS with 0.02% sodium azide and 50% glycerol, pH 7.3.
Storage	Shipped on wet ice. Store at -20°C. Stable for 12 months from date of receipt. Aliquoting is unnecessary for -20°C storage.
Precautions	[KO Validated] Anti-BAP1 Rabbit mAb [37M71S60] is for research use only and not for use in diagnostic or therapeutic procedures.

### Protein Information

Synonyms	BAP1; BRCA1 Associated Protein 1; KIAA0272; Hucep-6; UCHL2; BRCA1 Associated Protein-1 (Ubiquitin Carboxy-Terminal Hydrolase); Ubiquitin Carboxyl-Terminal Hydrolase BAP1; Cerebral Protein 6; Ubiquitin Carboxy-Terminal Hydrolase; BRCA1-Associated Protein 1; Cerebral Protein-13; EC 3.4.19.12; HUCEP-13; KURIS; TPDS1; UBM2; UVM2.
Calculated MW	Calculated MW: 80 kDa; Observed MW: 95 kDa
Uniprot ID	Q92560
Gene ID	8314
Background	This gene belongs to the ubiquitin C-terminal hydrolase subfamily of deubiquitinating enzymes that are involved in the removal of ubiquitin from proteins. The encoded enzyme binds to the breast cancer type 1 susceptibility protein (BRCA1) via the RING finger domain of the latter and acts as a tumor suppressor. In addition, the enzyme may be involved in regulation of transcription, regulation of cell cycle and growth, response to DNA damage and chromatin dynamics. Germline mutations in this gene may be associated with tumor predisposition syndrome (TPDS), which involves increased risk of cancers including malignant mesothelioma, uveal melanoma and cutaneous melanoma. [provided by RefSeq, May 2013]
Cellular Location	Cytoplasm. Nucleus. Mainly nuclear. Binds to chromatin.
Tissue Location	Highly expressed in testis, placenta and ovary. Expressed in breast.



Western blotting analysis using BAP1 antibody (R020148). Total cell lysates (30  $\mu$ g) from various cell lines were loaded and separated by SDS-PAGE. The blot was incubated with BAP1 antibody (R020148, 1:5,000) and HRP-conjugated goat anti-rabbit secondary antibody (1:20,000) respectively. Image was developed using ECL Substrate Kit.



Western blotting analysis using BAP1 antibody (R020148). BAP1 expression in wild type (WT) and BAP1 knockout (KO) HSHC cells with 20  $\mu$ g of total cell lysates.  $\beta$ -Tubulin serves as a loading control. The blot was incubated with BAP1 antibody (R020148, 1:5,000) and HRP-conjugated goat rabbit secondary antibody (1:20,000) respectively. Image was developed using ECL Substrate Kit.