

[KO Validated] Anti-ALPP Rabbit mAb

Purified Recombinant Rabbit Monoclonal Antibody

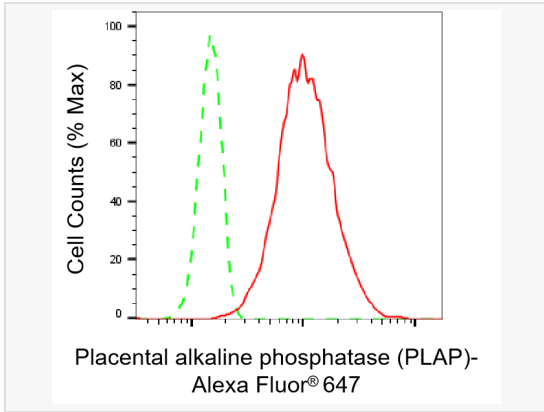
Catalog # R020128

Product Information

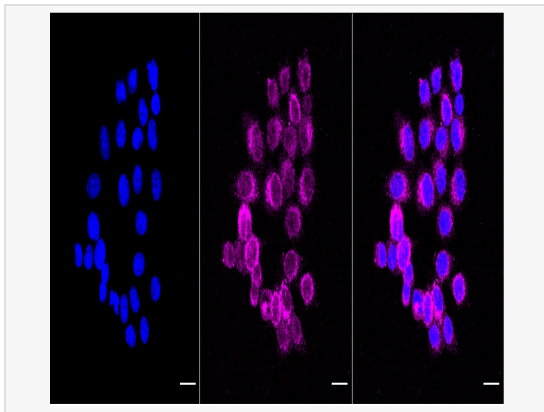
Application	WB, FC, IF (Cell)/ICC
Reactivity	Human
Dilution	WB 1:1,000~1:5,000; FC 1:200~1:2,000; IF 1:100~1:1,000
Host	Rabbit
Clonality	Monoclonal
Clone No.	75Q92S39
Isotype	IgG
Label	Unconjugated
Immunogen	A synthesized peptide derived from human Placental alkaline phosphatase (PLAP)
Format	Affinity purified monoclonal antibody supplied in PBS with 0.02% sodium azide and 50% glycerol, pH 7.3.
Storage	Shipped on wet ice. Store at -20°C. Stable for 12 months from date of receipt. Aliquoting is unnecessary for -20°C storage.
Precautions	[KO Validated] Anti-ALPP Rabbit mAb [75Q92S39] is for research use only and not for use in diagnostic or therapeutic procedures.

Protein Information

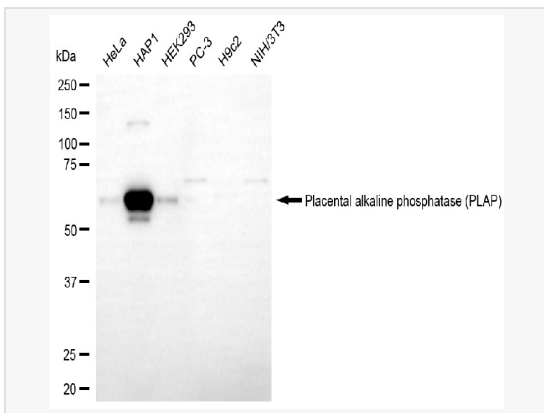
Synonyms	ALPP; Alkaline Phosphatase, Placental; PLAP; PALP; Alkaline Phosphatase, Placental Type; Alkaline Phosphatase Regan Isozyme; Placental Alkaline Phosphatase 1; EC 3.1.3.1; PLAP-1; Alkaline Phosphatase, Placental (Regan Isozyme); Intestinal-Type Alkaline Phosphatase; Intestinal Alkaline Phosphatase; Placental Alkaline Phosphatase; Alkaline Phosphomonoesterase; Glycerophosphatase; Regan Isozyme; ALPI; ALP; IAP.
Calculated MW	Calculated MW: 58 kDa; Observed MW: 70 kDa
Uniprot ID	P05187
Gene ID	250
Background	PLAP may assist in guiding migratory cells and transporting specific molecules, such as fatty acids and immunoglobulins, across the plasma membrane. The three tissue-specific APs identified in human, PLAP, germ cell AP (GCAP) and intestinal AP, are 90-98% homologous and their genes are clustered on chromosome 2q.



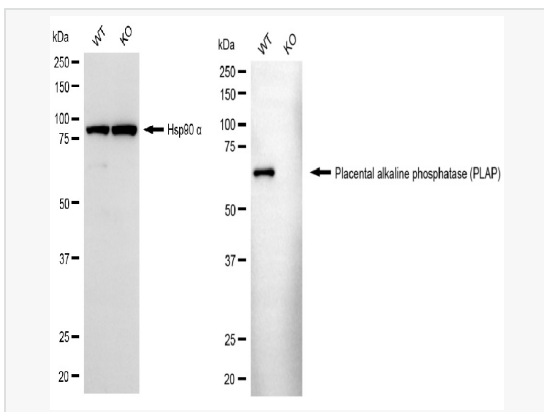
Flow cytometric analysis of Placental alkaline phosphatase (PLAP) expression in HepG2 cells using Placental alkaline phosphatase (PLAP) antibody (R020128, 1:2,000). Green, isotype control; red, Placental alkaline phosphatase (PLAP).



Immunocytochemical staining of HepG2 cells with Placental alkaline phosphatase (PLAP) antibody (R020128, 1:1,000). Nuclei were stained blue with DAPI; Placental alkaline phosphatase (PLAP) was stained magenta with Alexa Fluor® 647. Images were taken using Leica stellaris 5. Protein abundance based on laser Intensity and smart gain: Medium. Scale bar, 20 µm.



Western blotting analysis using placental alkaline phosphatase (PLAP) antibody (R020128). Total cell lysates (30 µg) from various cell lines were loaded and separated by SDS-PAGE. The blot was incubated with placental alkaline phosphatase (PLAP) antibody (R020128, 1:5,000) and HRP-conjugated goat anti-rabbit secondary antibody (1:20,000) respectively. Image was developed using ECL Substrate Kit.



Western blotting analysis using placental alkaline phosphatase (PLAP) antibody (R020128). Placental alkaline phosphatase (PLAP) expression in wild type (WT) and ALPP knockout (KO) HSHC cells with 20 µg of total cell lysates. Hsp90 α serves as a loading control. The blot was incubated with placental alkaline phosphatase (PLAP) antibody (R020128, 1:5,000) and HRP-conjugated goat anti-rabbit secondary antibody (1:20,000) respectively. Image was developed using ECL Substrate Kit.