

[KD Validated] Anti-CASP1 Rabbit mAb

Purified Recombinant Rabbit Monoclonal Antibody

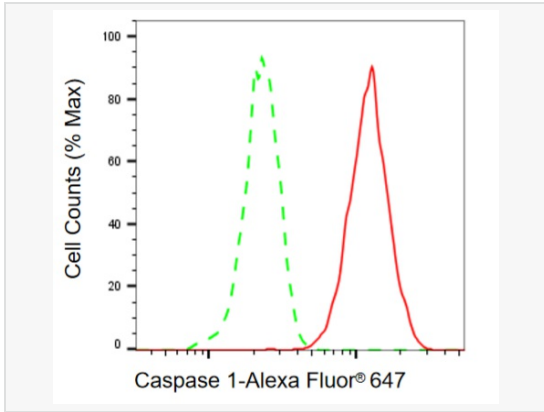
Catalog # R020099

Product Information

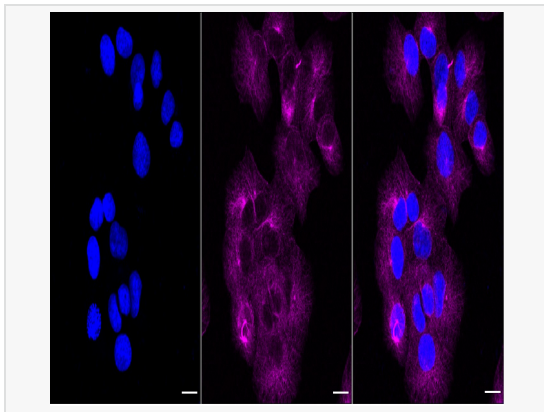
Application	WB, FC, IF (Cell)/ICC
Reactivity	Human, Mouse
Dilution	WB 1:1,000~1:5,000; FC 1:200~1:2,000; IF 1:100~1:1,000
Host	Rabbit
Clonality	Monoclonal
Clone No.	70L14C80
Isotype	IgG
Label	Unconjugated
Immunogen	A synthesized peptide derived from human Caspase-1
Format	Affinity purified monoclonal antibody supplied in PBS with 0.02% sodium azide and 50% glycerol, pH 7.3.
Storage	Shipped on wet ice. Store at -20°C. Stable for 12 months from date of receipt. Aliquoting is unnecessary for -20°C storage.
Precautions	[KD Validated] Anti-CASP1 Rabbit mAb [70L14C80] is for research use only and not for use in diagnostic or therapeutic procedures.

Protein Information

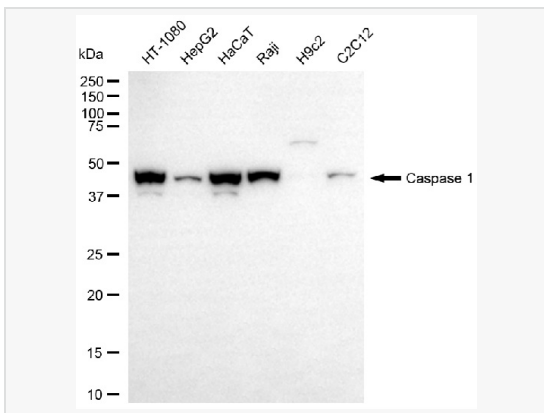
Synonyms	CASP1; Caspase 1; ICE; Caspase-1; IL1BC; Caspase 1, Apoptosis-Related Cysteine Peptidase; Interleukin 1, Beta, Convertase; IL-1 Beta-Converting Enzyme; EC 3.4.22.36; P45; Caspase 1, Apoptosis-Related Cysteine Peptidase (Interleukin 1, Beta, Convertase); Caspase 1, Apoptosis-Related Cysteine Protease (Interleukin 1, Beta, Convertase); Interleukin-1 Beta-Converting Enzyme; Interleukin 1-B Converting Enzyme; Interleukin-1 Beta Convertase; IL1B-Convertase; EC 3.4.22; IL1BCE; CASP-1; IL-1BC.
Calculated MW	Calculated MW: 45 kDa; Observed MW: 45 kDa
Uniprot ID	P29466
Gene ID	834
Background	Thiol protease that cleaves IL-1 beta between an Asp and an Ala, releasing the mature cytokine which is involved in a variety of inflammatory processes. Important for defense against pathogens. Cleaves and activates sterol regulatory element binding proteins (SREBPs). Can also promote apoptosis.



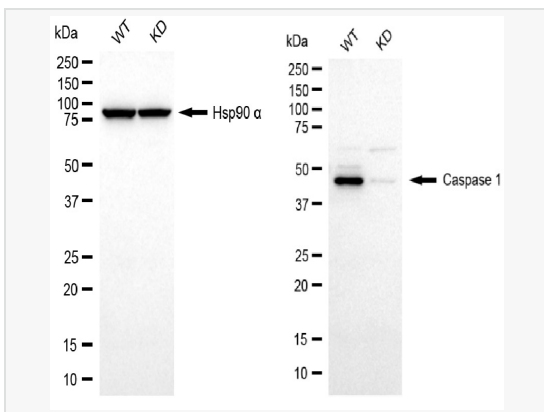
Flow cytometric analysis of Caspase 1 expression in HT-1080 cells using Caspase 1 antibody (R020099, 1:2,000). Green, isotype control; red, Caspase 1.



Immunocytochemical staining of HT-1080 cells with Caspase 1 antibody (R020099, 1:1,000). Nuclei were stained blue with DAPI; Caspase 1 was stained magenta with Alexa Fluor® 647. Images were taken using Leica stellaris 5. Protein abundance based on laser Intensity and smart gain: Medium. Scale bar, 20 µm.



Western blotting analysis using caspase 1 antibody (R020099). Total cell lysates (30 µg) from various cell lines were loaded and separated by SDS-PAGE. The blot was incubated with caspase 1 antibody (R020099, 1:5,000) and HRP-conjugated goat rabbit secondary antibody (1:20,000) respectively. Image was developed using ECL Substrate Kit.



Western blotting analysis using caspase 1 antibody (R020099). Caspase 1 expression in wild-type (WT) and caspase 1 (CASP1) knockdown (KD) HT-1080 cells with 20 µg of total cell lysates. Hsp90 α serves as a loading control. The blot was incubated with caspase 1 antibody (R020099, 1:5,000) and HRP-conjugated goat rabbit secondary antibody (1:20,000) respectively. Image was developed using ECL Substrate Kit.