

[KD Validated] Anti-LMNB1 Rabbit mAb

Purified Recombinant Rabbit Monoclonal Antibody

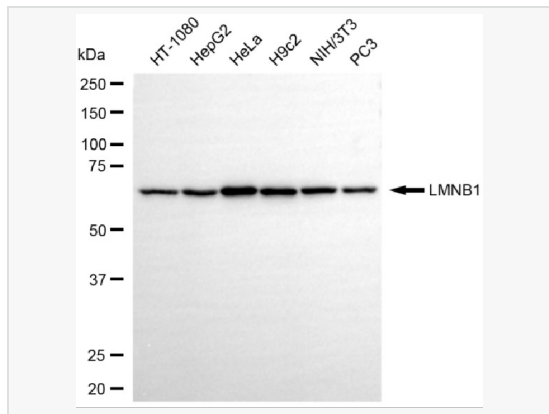
Catalog # R020087

Product Information

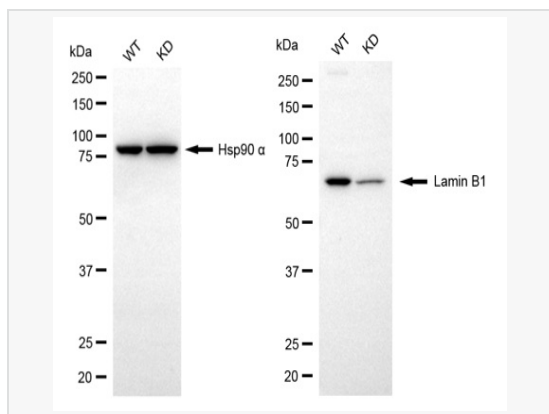
Application	WB
Reactivity	Human, Mouse, Rat
Dilution	WB 1:2,000~1:10,000
Host	Rabbit
Clonality	Monoclonal
Clone No.	94B91M23
Isotype	IgG
Label	Unconjugated
Immunogen	Recombinant protein of human Lamin B1
Format	Affinity purified monoclonal antibody supplied in PBS with 0.02% sodium azide and 50% glycerol, pH 7.3.
Storage	Shipped on wet ice. Store at -20°C. Stable for 12 months from date of receipt. Aliquoting is unnecessary for -20°C storage.
Precautions	[KD Validated] Anti-LMNB1 Rabbit mAb [94B91M23] is for research use only and not for use in diagnostic or therapeutic procedures.

Protein Information

Synonyms	Lamin B1; LMN2; LMNB; ADLD; LMN; lamin-B1.
Calculated MW	Calculated MW: 66 kDa; Observed MW: 66 kDa
Uniprot ID	P20700
Gene ID	4001
Background	This gene encodes one of the two B-type lamin proteins and is a component of the nuclear lamina. A duplication of this gene is associated with autosomal dominant adult-onset leukodystrophy (ADLD). Alternative splicing results in multiple transcript variants. [provided by RefSeq, Dec 2015]
Cellular Location	Nucleus inner membrane.



Western blotting analysis using LMNB1 antibody (R020087). Total cell lysates (30 μ g) from various cell lines were loaded and separated by SDS-PAGE. The blot was incubated with LMNB1 antibody (R020087, 1:10,000) and HRP-conjugated goat rabbit secondary antibody (1:20,000) respectively. Image was developed using ECL Substrate Kit.



Western blotting analysis using lamin B1 antibody (R020087). Lamin B1 expression in wild-type (WT) and lamin B1 (LMNB1) knockdown (KD) HSHC cells with 20 μ g of total cell lysates. Hsp90 α serves as a loading control. The blot was incubated with lamin B1 antibody (R020087, 1:10,000) and HRP-conjugated goat rabbit secondary antibody (1:20,000) respectively. Image was developed using ECL Substrate Kit.