

[KD Validated] Anti-GSN Rabbit mAb

Purified Recombinant Rabbit Monoclonal Antibody

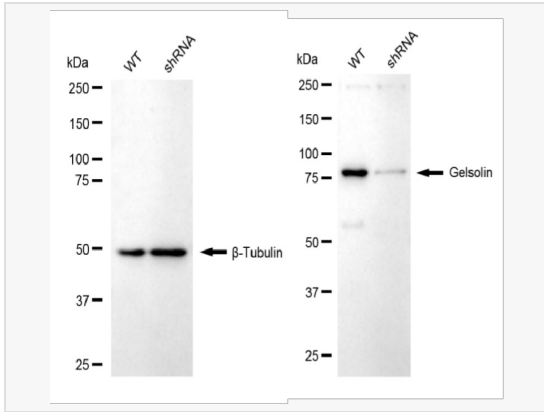
Catalog # R020082

Product Information

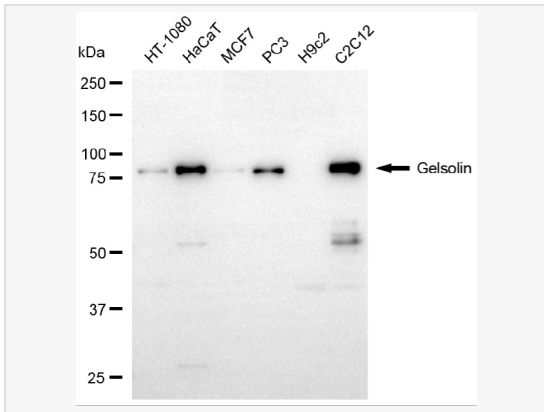
Application	WB, FC
Reactivity	Human, Mouse
Dilution	WB 1:1,000~1:5,000; FC 1:200~1:2,000
Host	Rabbit
Clonality	Monoclonal
Clone No.	67S58K70
Isotype	IgG
Label	Unconjugated
Immunogen	A synthesized peptide derived from human Gelsolin
Format	Affinity purified monoclonal antibody supplied in PBS with 0.02% sodium azide and 50% glycerol, pH 7.3.
Storage	Shipped on wet ice. Store at -20°C. Stable for 12 months from date of receipt. Aliquoting is unnecessary for -20°C storage.
Precautions	[KD Validated] Anti-GSN Rabbit mAb [67S58K70] is for research use only and not for use in diagnostic or therapeutic procedures.

Protein Information

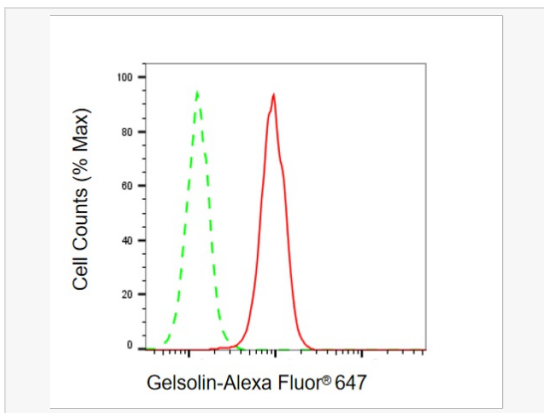
Synonyms	GSN; Gelsolin; Actin-Depolymerizing Factor; DKFZp313L0718; Brevin; AGEL; ADF; Epididymis Secretory Sperm Binding Protein; Gelsolin (Amyloidosis, Finnish Type); Amyloidosis, Finnish Type.
Calculated MW	Calculated MW: 86 kDa; Observed MW: 86 kDa
Uniprot ID	P06396
Gene ID	2934
Background	Calcium-regulated, actin-modulating protein that binds to the plus (or barbed) ends of actin monomers or filaments, preventing monomer exchange (end-blocking or capping). It can promote the assembly of monomers into filaments (nucleation) as well as sever filaments already formed. Plays a role in ciliogenesis.



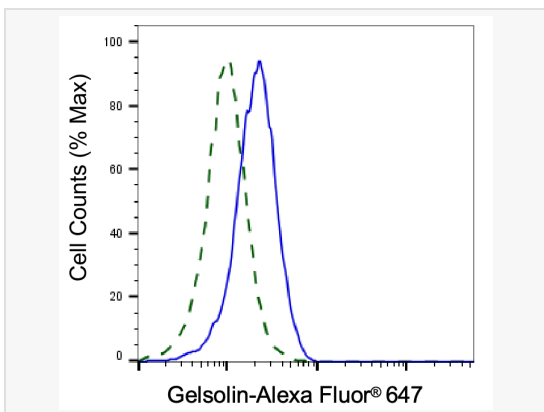
Western blotting analysis using gelsolin antibody (R020082). Gelsolin expression in wild-type (WT) and gelsolin (GSN) shRNA knockdown (KD) HT-1080 cells with 20 μ g of total cell lysates. β -Tubulin serves as a loading control. The blot was incubated with gelsolin antibody (R020082, 1:5,000) and HRP-conjugated goat rabbit secondary antibody (1:20,000) respectively. Image was developed using ECL Substrate Kit.



Western blotting analysis using gelsolin antibody (R020082). Total cell lysates (30 μ g) from various cell lines were loaded and separated by SDS-PAGE. The blot was incubated with gelsolin antibody (R020082, 1:5,000) and HRP-conjugated goat rabbit secondary antibody (1:20,000) respectively. Image was developed using ECL Substrate Kit.



Flow cytometric analysis of Gelsolin expression in C2C12 cells using Gelsolin antibody (R020082, 1:2,000). Green, isotype control; red, Gelsolin.



Validation of Gelsolin knockdown using flow cytometry. Wild-type(WT, Blue) and knockdown(KD, Green) HT-1080 cells were stained with Gelsolin antibody (R020082, 1:2,000) and analyzed using BD flow cytometer.