

## [KD Validated] Anti-BECN1 Rabbit mAb

Purified Recombinant Rabbit Monoclonal Antibody

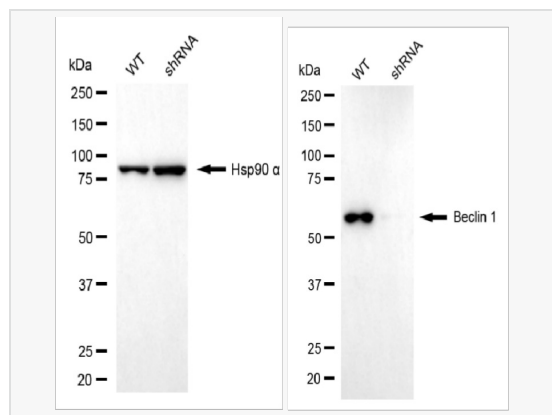
Catalog # R020080

### Product Information

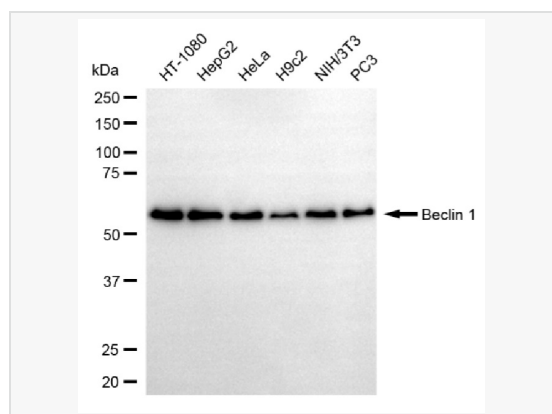
Application	WB, FC, IF (Cell)/ICC
Reactivity	Human, Mouse, Rat
Dilution	WB 1:1,000~1:5,000; FC 1:200~1:2,000; IF 1:100~1:1,000
Host	Rabbit
Clonality	Monoclonal
Clone No.	95D03H08
Isotype	IgG
Label	Unconjugated
Immunogen	A synthesized peptide derived from human Beclin 1
Format	Affinity purified monoclonal antibody supplied in PBS with 0.02% sodium azide and 50% glycerol, pH 7.3.
Storage	Shipped on wet ice. Store at -20°C. Stable for 12 months from date of receipt. Aliquoting is unnecessary for -20°C storage.
Precautions	[KD Validated] Anti-BECN1 Rabbit mAb [95D03H08] is for research use only and not for use in diagnostic or therapeutic procedures.

### Protein Information

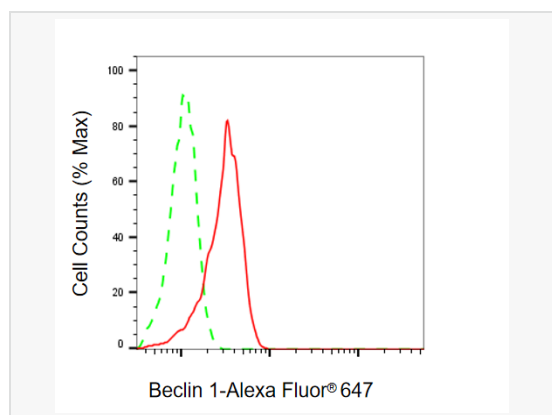
Synonyms	BECN1; Beclin 1; VPS30; ATG6; Coiled-Coil Myosin-Like BCL2-Interacting Protein; Beclin 1, Autophagy Related; Beclin-1; Beclin 1 (Coiled-Coil, Moesin-Like BCL2 Interacting Protein); Beclin 1 (Coiled-Coil, Moesin-Like BCL2-Interacting Protein); ATG6 Autophagy Related 6 Homolog (S. Cerevisiae); Testis Secretory Sperm-Binding Protein Li 215e; ATG6 Autophagy Related 6 Homolog; Beclin1-Gamma; Protein GT197; Beclin1-Beta; Beclin1; GT197.
Calculated MW	Calculated MW: 52 kDa; Observed MW: 55 kDa
Uniprot ID	Q14457
Gene ID	8678
Background	Plays a central role in autophagy. Required for the abscission step in cytokinesis. May play a role in antiviral host defense. Protects against infection by a neurovirulent strain of Sindbis virus.



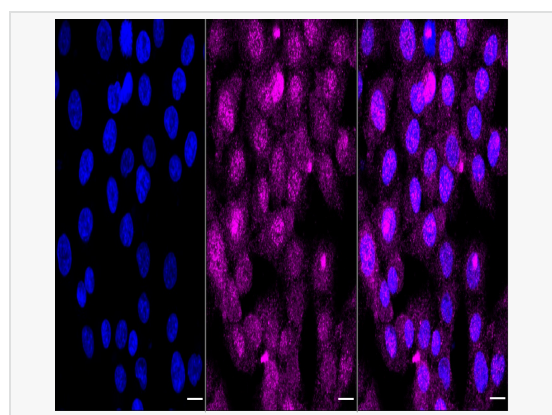
Western blotting analysis using beclin 1 antibody (R020080). Total cell lysates (30 µg) from various cell lines were loaded and separated by SDS-PAGE. The blot was incubated with beclin 1 antibody (R020080, 1:5,000) and HRP-conjugated goat rabbit secondary antibody (1:20,000) respectively. Image was developed using ECL Substrate Kit.



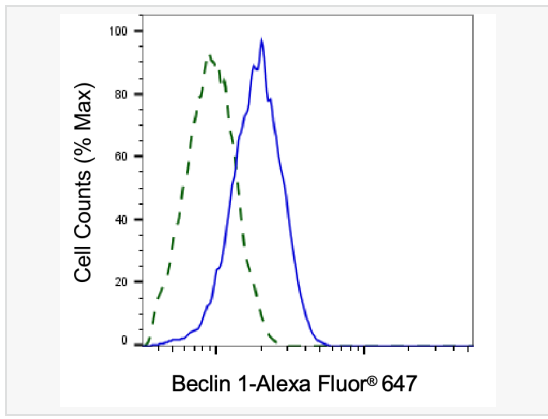
Flow cytometric analysis of Beclin 1 expression in HT-1080 cells using Beclin 1 antibody (R020080, 1:2,000). Green, isotype control; red, Beclin 1.



Immunocytochemical staining of HT-1080 cells with Beclin 1 antibody (R020080, 1:1,000). Nuclei were stained blue with DAPI; Beclin 1 was stained magenta with Alexa Fluor® 647. Images were taken using Leica stellaris 5. Protein abundance based on laser Intensity and smart gain: Medium. Scale bar, 20 µm.



Immunocytochemical staining of HT-1080 cells with Beclin 1 antibody (R020080, 1:1,000). Nuclei were stained blue with DAPI; Beclin 1 was stained magenta with Alexa Fluor® 647. Images were taken using Leica stellaris 5. Protein abundance based on laser Intensity and smart gain: Medium. Scale bar, 20 µm.



Validation of Beclin 1 knockdown using flow cytometry. Wild-type(WT, Blue) and knockdown(KD, Green) HeLa cells were stained with Beclin 1 antibody (R020080, 1:2,000) and analyzed using BD flow cytometer.