

## [KD Validated] Anti-RHOA Rabbit mAb

Purified Recombinant Rabbit Monoclonal Antibody

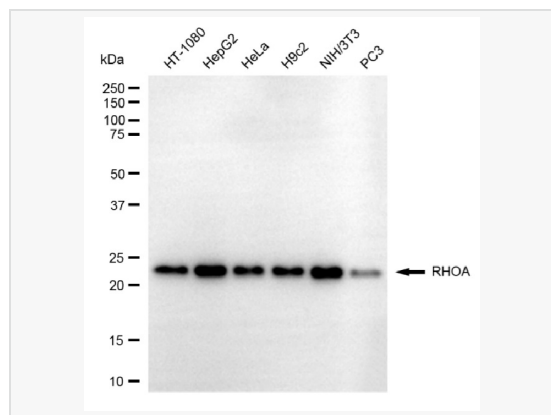
Catalog # R020077

### Product Information

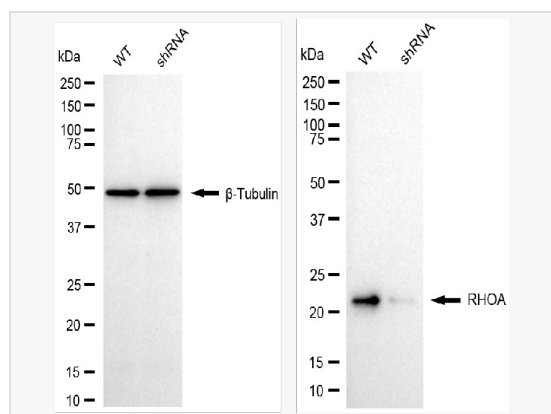
Application	WB, FC, IF (Cell)/ICC, IHC-P/IF (Tissue-P)
Reactivity	Human, Mouse, Rat
Dilution	WB 1:1,000~1:5,000; FC 1:200~1:2,000; IF 1:100~1:1,000; IHC-P 1:100~1:200
Host	Rabbit
Clonality	Monoclonal
Clone No.	27N85J50
Isotype	IgG
Label	Unconjugated
Immunogen	A synthesized peptide derived from human Rho A
Format	Affinity purified monoclonal antibody supplied in PBS with 0.02% sodium azide and 50% glycerol, pH 7.3.
Storage	Shipped on wet ice. Store at -20°C. Stable for 12 months from date of receipt. Aliquoting is unnecessary for -20°C storage.
Precautions	[KD Validated] Anti-RHOA Rabbit mAb [27N85J50] is for research use only and not for use in diagnostic or therapeutic procedures.

### Protein Information

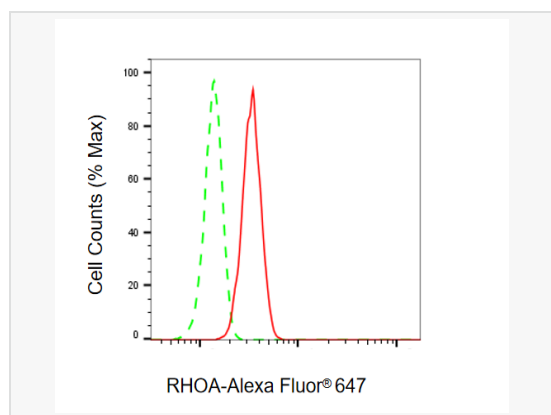
Synonyms	Ras Homolog Family Member A; RHOH12; Rho12; ARH12; ARHA; Transforming Protein RhoA; Epididymis Secretory Sperm Binding Protein; Ras Homolog Gene Family, Member A; Aplysia Ras-Related Homolog 12; Small GTP Binding Protein RhoA; Rho CDNA Clone 12; Oncogene RHO H12; EC 3.6.5.2; EDFAOB; RHO12; H12.
Calculated MW	Calculated MW: 22 kDa, Observed MW: 22 kDa
Uniprot ID	P61586
Gene ID	387
Background	Rho A is a small G protein of the Rho family. Regulates a signal transduction pathway linking plasma membrane receptors to the assembly of focal adhesions and actin stress fibers.



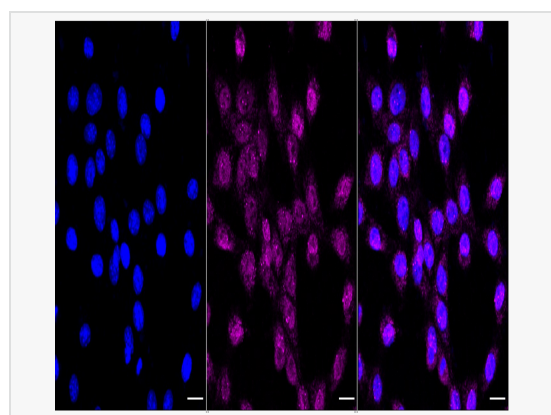
Western blotting analysis using RHOA antibody (R020077). Total cell lysates (30  $\mu$ g) from various cell lines were loaded and separated by SDS-PAGE. The blot was incubated with RHOA antibody (R020077, 1:5,000) and HRP-conjugated goat anti-rabbit secondary antibody (1:20,000) respectively. Image was developed using ECL Substrate Kit.



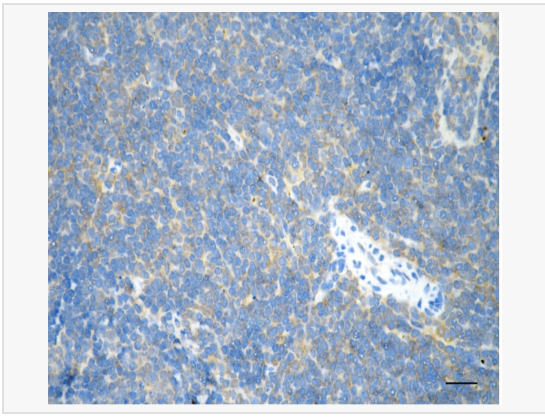
Western blotting analysis using RHOA antibody (R020077). RHOA expression in wild-type (WT) and RHOA shRNA knockdown (KD) HT-1080 cells with 20  $\mu$ g of total cell lysates.  $\beta$ -Tubulin serves as a loading control. The blot was incubated with RHOA antibody (R020077, 1:5,000) and HRP-conjugated goat anti-rabbit secondary antibody (1:20,000) respectively. Image was developed using ECL Substrate Kit.



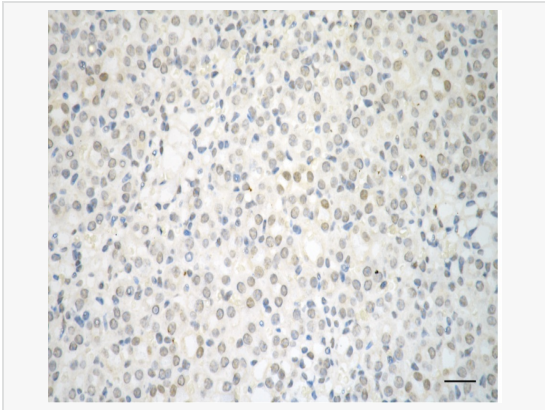
Flow cytometric analysis of RHOA expression in C2C12 cells using RHOA antibody (R020077, 1:2,000). Green, isotype control; red, RHOA.



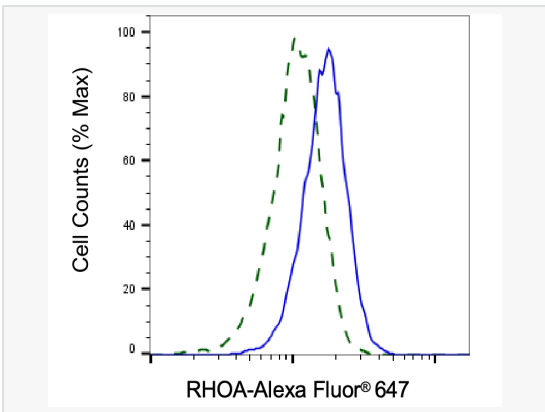
Immunocytochemical staining of C2C12 cells with RHOA antibody (R020077, 1:1,000). Nuclei were stained blue with DAPI; RHOA was stained magenta with Alexa Fluor<sup>®</sup> 647. Images were taken using Leica stellaris 5. Protein abundance based on laser Intensity and smart gain: Medium. Scale bar, 20  $\mu$ m.



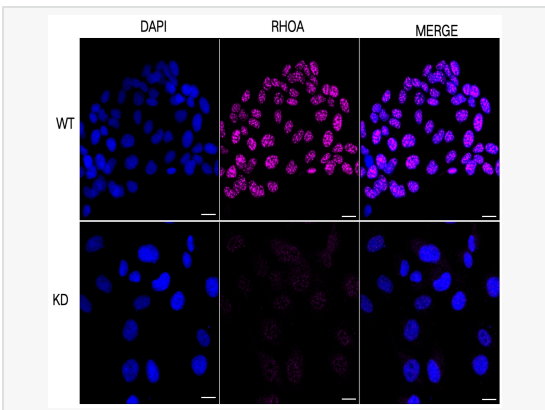
Immunohistochemistry was performed on paraffin-embedded mouse spleen using RHOA antibody (R020077, 1:200). Antigen retrieval was done in sodium citrate buffer (pH 6.0). DAB was used for detection, with hematoxylin counterstaining. Images were acquired using a Nikon Ci-L Plus microscope (40× objective). Scale bar: 25 μm.



Immunohistochemistry was performed on paraffin-embedded mouse kidney using RHOA antibody (R020077, 1:200). Antigen retrieval was done in sodium citrate buffer (pH 6.0). DAB was used for detection, with hematoxylin counterstaining. Images were acquired using a Nikon Ci-L Plus microscope (40× objective). Scale bar: 25 μm.



Validation of RHOA knockdown using flow cytometry. Wild-type(WT, Blue) and knockdown(KD, Green) HT-1080 cells were stained with RHOA antibody (R020077, 1:2,000) and analyzed using BD flow cytometer.



Immunocytochemical staining of HT-1080 cells using RHOA antibody (R020077, 1:1,000), Top panel: wild-type (WT); Bottom panel: RHOA shRNA knockdown (KD). Nuclei were stained blue with DAPI; RHOA was stained magenta with Alexa Fluor® 647. Scale bar, 20 μm.