

[KD Validated] Anti-DFFA Rabbit mAb

Purified Recombinant Rabbit Monoclonal Antibody

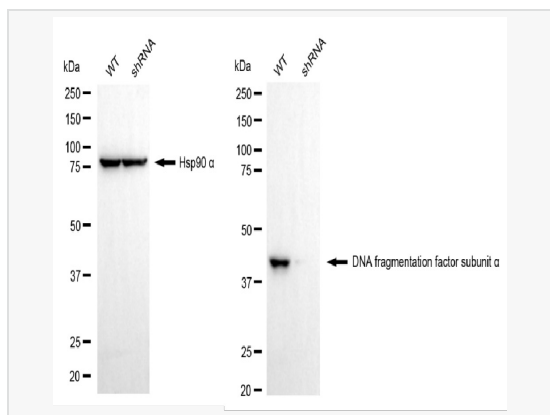
Catalog # R020073

Product Information

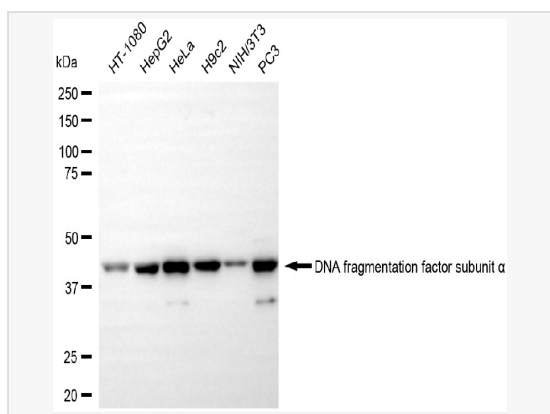
Application	WB, FC
Reactivity	Human, Mouse, Rat
Dilution	WB 1:1,000~1:5,000; FC 1:200~1:2,000
Host	Rabbit
Clonality	Monoclonal
Clone No.	52H79H34
Isotype	IgG
Label	Unconjugated
Immunogen	A synthesized peptide derived from human ICAD
Format	Affinity purified monoclonal antibody supplied in PBS with 0.02% sodium azide and 50% glycerol, pH 7.3.
Storage	Shipped on wet ice. Store at -20°C. Stable for 12 months from date of receipt. Aliquoting is unnecessary for -20°C storage.
Precautions	[KD Validated] Anti-DFFA Rabbit mAb [52H79H34] is for research use only and not for use in diagnostic or therapeutic procedures.

Protein Information

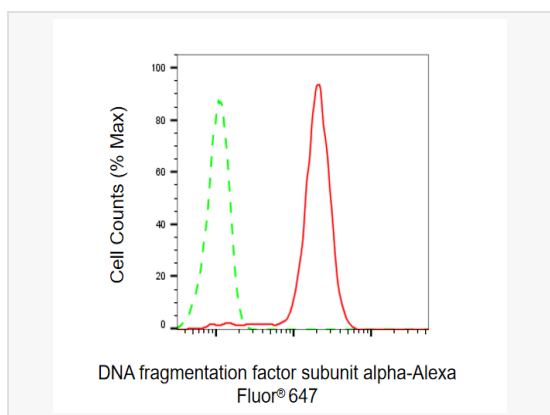
Synonyms	DFFA; DNA Fragmentation Factor Subunit Alpha; DFF-45; DFF45; ICAD; DFF1; DNA Fragmentation Factor, 45kDa, Alpha Polypeptide; DNA Fragmentation Factor 45 KDa Subunit; Inhibitor Of CAD; DNA Fragmentation Factor, 45 KD, Alpha Polypeptide; DNA Fragmentation Factor, 45 KD, Alpha Subunit.
Calculated MW	Calculated MW: 37 kDa; Observed MW: 45 kDa
Uniprot ID	O00273
Gene ID	1676
Background	Inhibitor of the caspase-activated DNase (DFF40).



Western blotting analysis using DNA fragmentation factor subunit alpha antibody (R020073). DNA fragmentation factor subunit alpha expression in wild type (WT) and DNA fragmentation factor subunit alpha (DFFA) shRNA knockdown (KD) HeLa cells with 20 μ g of total cell lysates. Hsp90 α serves as a loading control. The blot was incubated with DNA fragmentation factor subunit alpha antibody (R020073, 1:5,000) and HRP-conjugated goat rabbit secondary antibody (1:20,000) respectively. Image was developed using ECL Substrate Kit.



Western blotting analysis using DNA fragmentation factor subunit alpha antibody (R020073). Total cell lysates (20 μ g) from various cell lines were loaded and separated by SDS-PAGE. The blot was incubated with DNA fragmentation factor subunit alpha antibody (R020073, 1:5,000) and HRP-conjugated goat rabbit secondary antibody (1:20,000) respectively. Image was developed using ECL Substrate Kit.



Flow cytometric analysis of DNA fragmentation factor subunit alpha expression in HepG2 cells using DNA fragmentation factor subunit alpha antibody (R020073, 1:2,000). Green, isotype control; red, DNA fragmentation factor subunit alpha.