

## [KD Validated] Anti-PIAS1 Rabbit mAb

Purified Recombinant Rabbit Monoclonal Antibody

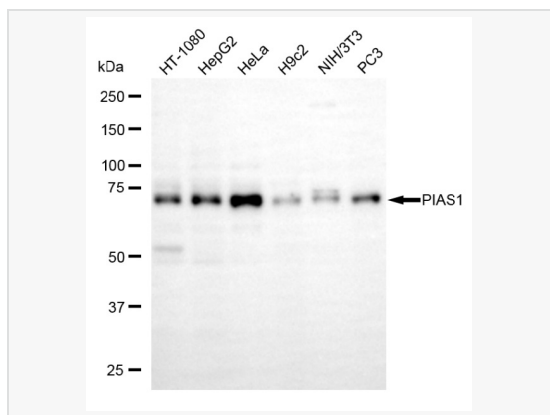
Catalog # R020068

### Product Information

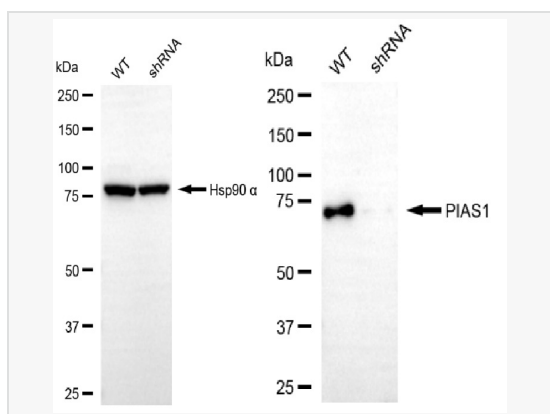
Application	WB
Reactivity	Human, Mouse, Rat
Dilution	WB 1:1,000~1:5,000
Host	Rabbit
Clonality	Monoclonal
Clone No.	12G79N18
Isotype	IgG
Label	Unconjugated
Immunogen	A synthesized peptide derived from human PIAS1
Format	Affinity purified monoclonal antibody supplied in PBS with 0.02% sodium azide and 50% glycerol, pH 7.3.
Storage	Shipped on wet ice. Store at -20°C. Stable for 12 months from date of receipt. Aliquoting is unnecessary for -20°C storage.
Precautions	[KD Validated] Anti-PIAS1 Rabbit mAb [12G79N18] is for research use only and not for use in diagnostic or therapeutic procedures.

### Protein Information

Synonyms	PIAS1; Protein Inhibitor Of Activated STAT 1; GBP; GU/RH-II; DDXBP1; ZMIZ3; DEAD/H (Asp-Glu-Ala-Asp/His) Box Binding Protein 1; Protein Inhibitor Of Activated STAT Protein 1; Zinc Finger, MIZ-Type Containing 3; E3 SUMO-Protein Transferase PIAS1; RNA Helicase II-Binding Protein; E3 SUMO-Protein Ligase PIAS1; DEAD/H Box-Binding Protein 1; Gu-Binding Protein; AR Interacting Protein; EC 2.3.2.-.
Calculated MW	Calculated MW: 72 kDa; Observed MW: 76 kDa
Uniprot ID	O75925
Gene ID	8554
Background	Functions as an E3-type small ubiquitin-like modifier (SUMO) ligase, stabilizing the interaction between UBE2I and the substrate, and as a SUMO-tethering factor. Plays a crucial role as a transcriptional coregulation in various cellular pathways, including the STAT pathway, the p53 pathway and the steroid hormone signaling pathway.
Cellular Location	Nucleus speckle. Interaction with CSRP2 may induce a partial redistribution along the cytoskeleton.
Tissue Location	Expressed in numerous tissues with highest level in testis.



Western blotting analysis using anti-PIAS1 antibody (R020068). Total cell lysates (30  $\mu$ g) from various cell lines were loaded and separated by SDS-PAGE. The blot was incubated with anti-PIAS1 antibody (R020068, 1:5,000) and HRP-conjugated goat anti rabbit secondary antibody (1:20,000) respectively. Image was developed using ECL Substrate Kit.



Western blotting analysis using PIAS1 antibody (R020068). PIAS1 expression in wild-type (WT) and PIAS1 shRNA knockdown (KD) HepG2 cells with 20  $\mu$ g of total cell lysates. Hsp90  $\alpha$  serves as a loading control. The blot was incubated with PIAS1 antibody (R020068, 1:5,000) and HRP-conjugated goat rabbit secondary antibody (1:20,000) respectively. Image was developed using ECL Substrate Kit.