

[KD Validated] Anti-RBL2 Rabbit mAb

Purified Recombinant Rabbit Monoclonal Antibody

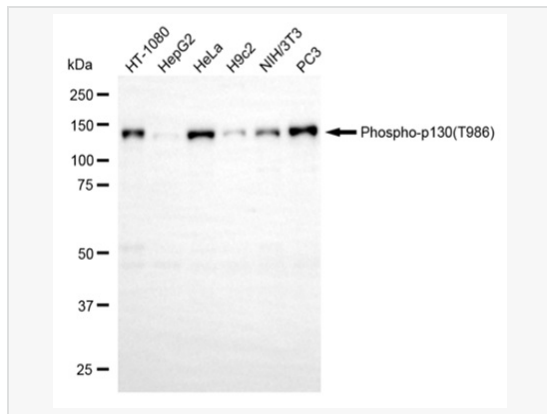
Catalog # R020064

Product Information

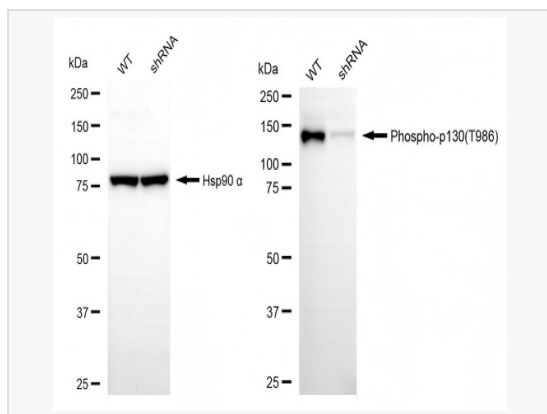
| | |
|-------------|--|
| Application | WB |
| Reactivity | Human, Mouse, Rat |
| Dilution | WB 1:1,000~1:5,000 |
| Host | Rabbit |
| Clonality | Monoclonal |
| Clone No. | 77S24D95 |
| Isotype | IgG |
| Label | Unconjugated |
| Immunogen | A synthesized peptide derived from human Phospho-p130(T986) |
| Format | Affinity purified monoclonal antibody supplied in PBS with 0.02% sodium azide and 50% glycerol, pH 7.3. |
| Storage | Shipped on wet ice. Store at -20°C. Stable for 12 months from date of receipt. Aliquoting is unnecessary for -20°C storage. |
| Precautions | [KD Validated] Anti-RBL2 Rabbit mAb [77S24D95] is for research use only and not for use in diagnostic or therapeutic procedures. |

Protein Information

| | |
|-------------------|--|
| Synonyms | RB Transcriptional Corepressor Like 2; P130; Rb2; 130 KDa Retinoblastoma-Associated Protein; Retinoblastoma-Related Protein 2; Retinoblastoma-Like Protein 2; Retinoblastoma-Like 2; RBR-2; BRUWAG ; PRB2; PRb2; RB2. |
| Calculated MW | Calculated MW: 128 kDa; Observed MW: 128 kDa |
| Uniprot ID | Q08999 |
| Gene ID | 5934 |
| Background | Key regulator of entry into cell division. Directly involved in heterochromatin formation by maintaining overall chromatin structure and, in particular, that of constitutive heterochromatin by stabilizing histone methylation. Recruits and targets histone methyltransferases KMT5B and KMT5C, leading to epigenetic transcriptional repression. Controls histone H4 'Lys-20' trimethylation. Probably acts as a transcription repressor by recruiting chromatin-modifying enzymes to promoters. Potent inhibitor of E2F-mediated trans-activation, associates preferentially with E2F5. Binds to cyclins A and E. Binds to and may be involved in the transforming capacity of the adenovirus E1A protein. May act as a tumor suppressor. |
| Cellular Location | Nucleus. |



Western blotting analysis using phospho-p130(T986) antibody (R020064). Total cell lysates (30 μ g) from various cell lines were loaded and separated by SDS-PAGE. The blot was incubated with phospho-p130(T986) antibody (R020064, 1:5,000) and HRP-conjugated goat anti-rabbit secondary antibody (1:20,000) respectively. Image was developed using ECL Substrate Kit.



Western blotting analysis using phospho-p130 (T986) antibody (R020064). Phospho-p130 (T986) expression in wild-type (WT) and RBL2 shRNA knockdown (KD) HSHC cells with 20 μ g of total cell lysates. Hsp90 α serves as a loading control. The blot was incubated with phospho-p130 (T986) antibody (R020064, 1:5,000) and HRP-conjugated goat anti-rabbit secondary antibody (1:20,000) respectively. Image was developed using ECL Substrate Kit.