

[KD Validated] Anti-PML Mouse mAb

Purified Recombinant Rabbit Monoclonal Antibody

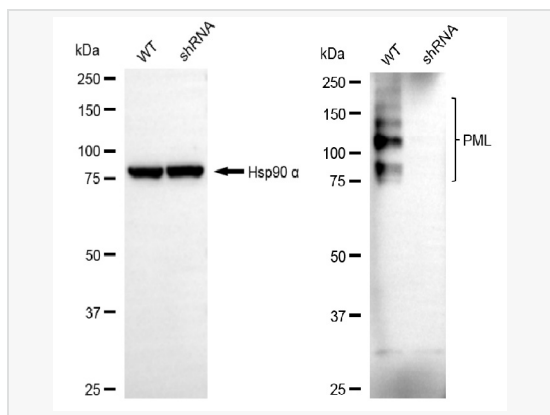
Catalog # M020046

Product Information

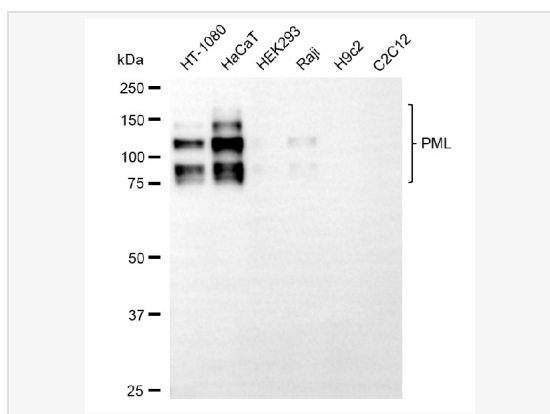
Application	WB, IHC-P/IF (Tissue-P)
Reactivity	Human
Dilution	WB 1:400~1:2,000; IHC-P 1:100~1:200
Host	Mouse
Clonality	Monoclonal
Clone No.	60T10G29
Isotype	IgG
Label	Unconjugated
Immunogen	Recombinant protein of human PML
Format	Affinity purified monoclonal antibody supplied in PBS with 0.02% sodium azide and 50% glycerol, pH 7.3.
Storage	Shipped on wet ice. Store at -20°C. Stable for 12 months from date of receipt. Aliquoting is unnecessary for -20°C storage.
Precautions	[KD Validated] Anti-PML Mouse mAb [60T10G29] is for research use only and not for use in diagnostic or therapeutic procedures.

Protein Information

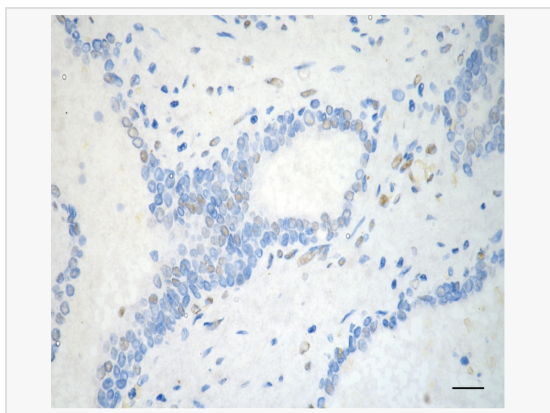
Synonyms	PML; PML Nuclear Body Scaffold; TRIM19; RNF71; MYL; Tripartite Motif-Containing Protein 19; RING-Type E3 SUMO Transferase PML; Promyelocytic Leukemia Protein; E3 SUMO-Protein Ligase PML; RING Finger Protein 71; Protein PML; PP8675; Promyelocytic Leukemia, Inducer Of; Probable Transcription Factor PML; Tripartite Motif Protein TRIM19; Promyelocytic Leukemia; PML/RARA Fusion; EC 2.3.2.-.
Calculated MW	Calculated MW: 98 kDa; Observed MW: 75-200 kDa
Uniprot ID	P29590
Gene ID	5371
Background	Regulates RBI phosphorylation and activity. Required for normal development of the brain cortex during embryogenesis. Can sequester herpes virus and varicella virus proteins inside PML bodies, and thereby inhibit the formation of infectious viral particles. Regulates phosphorylation of ITPR3 and plays a role in the regulation of calcium homeostasis at the endoplasmic reticulum (By similarity). Regulates transcription activity of ELF4.



Western blotting analysis using PML antibody (M020046). PML expression in wild-type (WT) and PML shRNA knockdown (KD) HeLa cells with 30 μ g of total cell lysates. Hsp90 α serves as a loading control. The blot was incubated with PML antibody (M020046, 1:2,000) and HRP-conjugated goat anti-mouse secondary antibody (1:20,000) respectively. Image was developed using ECL Substrate Kit.



Western blotting analysis using PML antibody (M020046). Total cell lysates (30 μ g) from various cell lines were loaded and separated by SDS-PAGE. The blot was incubated with PML antibody (M020046, 1:2,000) and HRP-conjugated goat anti-mouse secondary antibody (1:20,000) respectively. Image was developed using ECL Substrate Kit.



Immunohistochemistry was performed on paraffin-embedded human prostatic adenocarcinoma using PML antibody (M020046, 1:200). Antigen retrieval was done in sodium citrate buffer (pH 6.0). DAB was used for detection, with hematoxylin counterstaining. Images were acquired using a Nikon Ci-L Plus microscope (40 \times objective). Scale bar: 25 μ m.