

## [KD Validated] Anti-AKT2 Mouse mAb

Purified Recombinant Mouse Monoclonal Antibody

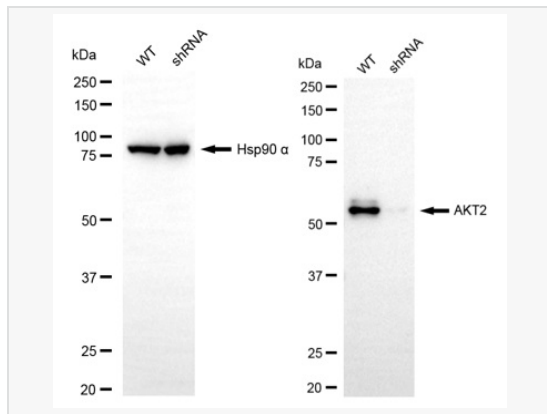
Catalog # M020028

### Product Information

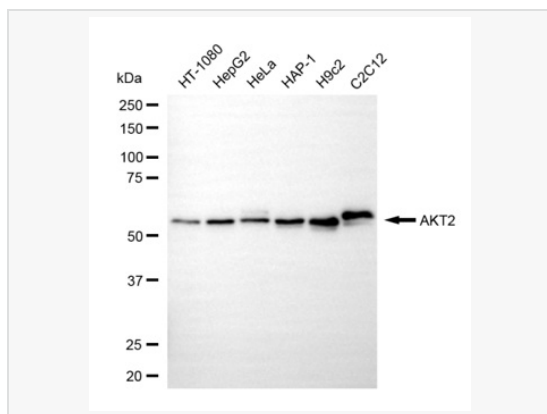
Application	WB, IF (Cell)/ICC
Reactivity	Human, Mouse, Rat
Dilution	WB 1:500~1:2,500; IF 1:100~1:1,000
Host	Mouse
Clonality	Monoclonal
Clone No.	57T56N15
Isotype	IgG
Label	Unconjugated
Immunogen	Recombinant protein of human AKT2
Format	Affinity purified monoclonal antibody supplied in PBS with 0.02% sodium azide and 50% glycerol, pH 7.3.
Storage	Shipped on wet ice. Store at -20°C. Stable for 12 months from date of receipt. Aliquoting is unnecessary for -20°C storage.
Precautions	[KD Validated] Anti-AKT2 Mouse mAb [57T56N15] is for research use only and not for use in diagnostic or therapeutic procedures.

### Protein Information

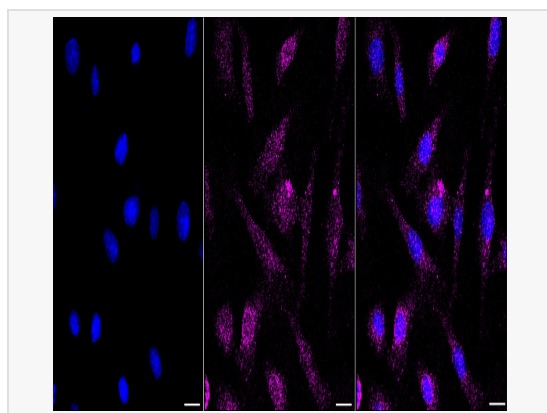
Synonyms	AKT2; AKT Serine/Threonine Kinase 2; V-Akt Murine Thymoma Viral Oncogene Homolog 2; RAC-Beta Serine/Threonine-Protein Kinase; Protein Kinase B Beta; Protein Kinase Akt-2; RAC-PK-Beta; EC 2.7.11.1; PKB Beta; PKBB; Putative V-Akt Murine Thymoma Viral Oncoprotein; Murine Thymoma Viral (V-Akt) Homolog-2; Rac Protein Kinase Beta; RAC Protein Kinase Beta; EC 2.7.11; RAC-BETA; PKBBETA; HIHGHH; PRKBB; PKBβ.
Calculated MW	Calculated MW: 56 kDa; Observed MW: 56 kDa
Uniprot ID	P31751
Gene ID	208
Background	AKT2 is a putative oncogene encoding a protein belonging to a subfamily of serine/threonine kinases containing SH2-like (Src homology 2-like) domains. AKT2 was shown to be amplified and overexpressed in 2 of 8 ovarian carcinoma cell lines and 2 of 15 primary ovarian tumors. Overexpression contributes to the malignant phenotype of a subset of human ductal pancreatic cancers. The encoded protein is a general protein kinase capable of phosphorylating several known proteins.
Tissue Location	Expressed in all human cell types so far analyzed.



Western blotting analysis using AKT2 antibody (M020028). AKT2 expression in wild-type (WT) and AKT2 shRNA knockdown (KD) HeLa cells with 20  $\mu$ g of total cell lysates. Hsp90  $\alpha$  serves as a loading control. The blot was incubated with AKT2 antibody (M020028, 1:5,000) and HRP-conjugated goat anti-mouse secondary antibody (1:20,000) respectively. Image was developed using ECL Substrate Kit.



Western blotting analysis using AKT2 antibody (M020028). Total cell lysates (30  $\mu$ g) from various cell lines were loaded and separated by SDS-PAGE. The blot was incubated with AKT2 antibody (M020028, 1:2,500) and HRP-conjugated goat anti-mouse secondary antibody (1:20,000) respectively. Image was developed using ECL Substrate Kit.



Immunocytochemical staining of C2C12 cells with AKT2 antibody (M020028, 1:1,000). Nuclei were stained blue with DAPI; AKT2 was stained magenta with Alexa Fluor<sup>®</sup> 647. Images were taken using Leica stellaris 5. Protein abundance based on laser Intensity and smart gain: Low. Scale bar, 20  $\mu$ m.