

[KD Validated] Anti-RAC1 Mouse mAb

Purified Recombinant Rabbit Monoclonal Antibody

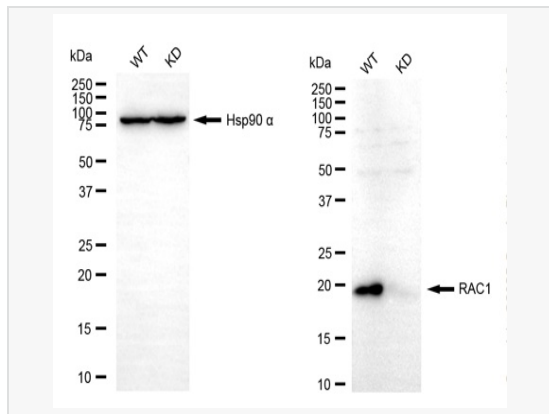
Catalog # M020023

Product Information

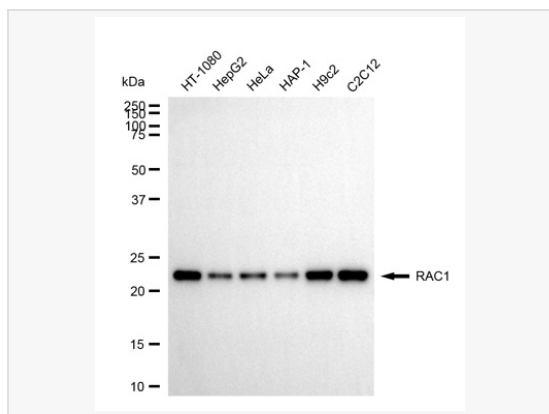
Application	WB, IF (Cell)/ICC
Reactivity	Human, Mouse, Rat
Dilution	WB 1:1,000~1:4,000; IF 1:100~1:1,000
Host	Mouse
Clonality	Monoclonal
Clone No.	56E58F01
Isotype	IgG
Label	Unconjugated
Immunogen	A synthesized peptide derived from human RAC1
Format	Affinity purified monoclonal antibody supplied in PBS with 0.02% sodium azide and 50% glycerol, pH 7.3.
Storage	Shipped on wet ice. Store at -20°C. Stable for 12 months from date of receipt. Aliquoting is unnecessary for -20°C storage.
Precautions	[KD Validated] Anti-RAC1 Mouse mAb [56E58F01] is for research use only and not for use in diagnostic or therapeutic procedures.

Protein Information

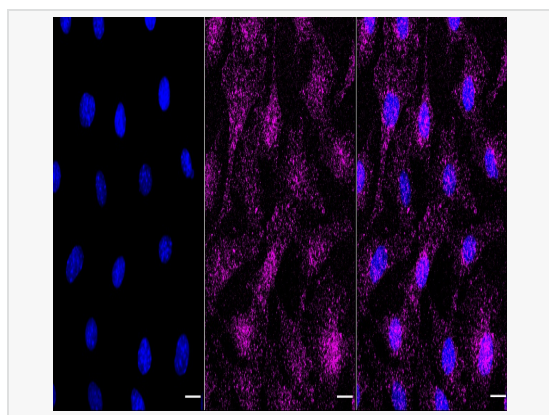
Synonyms	RAC1; Rac Family Small GTPase 1; P21-Rac1; TC-25; Rac-1; Ras-Related C3 Botulinum Toxin Substrate 1 (Rho Family, Small GTP Binding Protein Rac1); Ras-Related C3 Botulinum Toxin Substrate 1; Cell Migration-Inducing Gene 5 Protein; Ras-Like Protein TC25; EC 3.6.5.2; MRD48; MIG5; TC25.
Calculated MW	Calculated MW: 21 kDa; Observed MW: 22 kDa
Uniprot ID	P63000
Gene ID	5879
Background	Plasma membrane-associated small GTPase which cycles between active GTP-bound and inactive GDP-bound states.



Western blotting analysis using RAC1 antibody (M020023). RAC1 expression in wild-type (WT) and RAC1 knockdown (KD) HSHC cells with 20 μ g of total cell lysates. Hsp90 α serves as a loading control. The blot was incubated with RAC1 antibody (M020023, 1:4,000) and HRP-conjugated goat anti-mouse secondary antibody (1:20,000) respectively. Image was developed using ECL Substrate Kit.



Western blotting analysis using RAC1 antibody (M020023). Total cell lysates (30 μ g) from various cell lines were loaded and separated by SDS-PAGE. The blot was incubated with RAC1 antibody (M020023, 1:4,000) and HRP-conjugated goat anti-mouse secondary antibody (1:20,000) respectively. Image was developed using ECL Substrate Kit.



Immunocytochemical staining of C2C12 cells with RAC1 antibody (M020023, 1:1,000). Nuclei were stained blue with DAPI; RAC1 was stained magenta with Alexa Fluor[®] 647. Images were taken using Leica stellaris 5. Protein abundance based on laser Intensity and smart gain: Low. Scale bar, 20 μ m.