

Anti-POLR1C Rabbit mAb

Purified Recombinant Rabbit Monoclonal Antibody

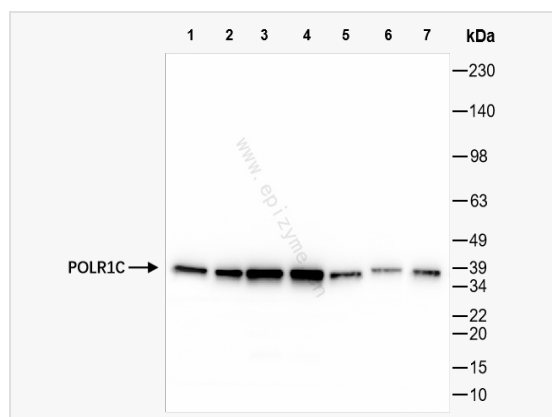
Catalog # R016063

Product Information

| | |
|-------------|---|
| Application | WB, ELISA |
| Reactivity | Human, Mouse, Rat |
| Dilution | WB 1:1,000~1:3,000 |
| Host | Rabbit |
| Clonality | Monoclonal |
| Clone No. | 92F65Q60 |
| Isotype | IgG |
| Label | Unconjugated |
| Immunogen | Recombinant protein of human POLR1C |
| Format | Affinity purified monoclonal antibody supplied in PBS with 0.02% sodium azide and 50% glycerol, pH 7.3. |
| Storage | Shipped on wet ice. Store at -20°C. Stable for 24 months from date of receipt. Aliquoting is unnecessary for -20°C storage. |
| Precautions | Anti-POLR1C Rabbit mAb [92F65Q60] is for research use only and not for use in diagnostic or therapeutic procedures. |

Protein Information

| | |
|-------------------|--|
| Synonyms | DNA-directed RNA polymerases I and III subunit RPAC1; DNA-directed RNA polymerase I subunit C; RNA polymerases I and III subunit AC1; AC40; DNA-directed RNA polymerases I and III 40 kDa polypeptide; RPA40; RPA39; RPC40; POLR1C; POLR1E. |
| Calculated MW | Calculated MW: 39 kDa; Observed MW: 39 kDa |
| Uniprot ID | O15160 |
| Gene ID | 9533 |
| Background | The protein encoded by this gene is a subunit of both RNA polymerase I and RNA polymerase III complexes. The encoded protein is part of the Pol core element. Mutations in this gene have been associated with Treacher Collins syndrome (TCS) and hypomyelinating leukodystrophy 11. Alternative splicing results in multiple transcript variants. [provided by RefSeq, Jan 2016] |
| Cellular Location | Nucleus Nucleus Nucleolus Cytoplasm Cytosol |



Western Blot - Anti-POLR1C Rabbit mAb [92F65Q60]

All lanes: R016063 at 1:3,000 dilution

Lane 1: HeLa (Human cervix adenocarcinoma epithelial cell) whole cell lysates

Lane 2: HepG2 (Human hepatocarcinoma epithelial cell) whole cell lysates

Lane 3: 293T (Human embryonic kidney cell) whole cell lysates

Lane 4: K562 (Human chronic myeloid leukemia cell) whole cell lysates

Lane 5: U87 (Human malignant glioblastoma epithelial cells) whole cell lysates

Lane 6: C2C12 (Mouse myoblasts epithelial cell) whole cell lysates

Lane 7: PC-12 (Rat adrenal pheochromocytoma epithelial cell) whole cell lysates

Lysates/proteins at 10 µg per lane.

Secondary antibody: Goat Anti-Rabbit IgG (H+L), HRP Conjugated (Cat. No. LF102) at 1:5,000 dilution

Predicted band size: 39 kDa

Observed band size: 39 kDa

Developed using the ECL technique (Cat. No. SQ201).