

Anti-Phospho-Stathmin 1 (Ser63) Rabbit mAb

Purified Recombinant Rabbit Monoclonal Antibody

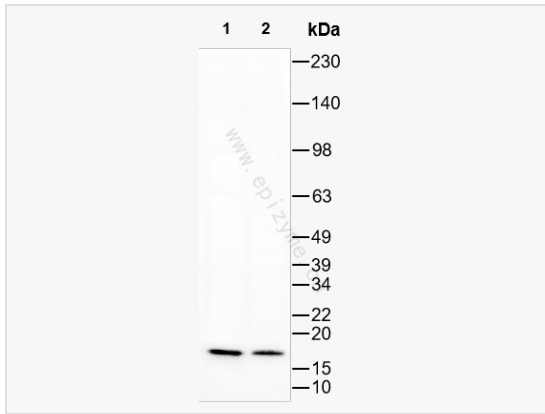
Catalog # R016054

Product Information

Application	WB, ELISA
Reactivity	Human, Mouse
Dilution	WB 1:1,000~1:2,000
Host	Rabbit
Clonality	Monoclonal
Clone No.	31A08S97
Isotype	IgG
Label	Unconjugated
Immunogen	A synthetic phosphopeptide corresponding to residues surrounding Ser63 of human Stathmin 1
Format	Affinity purified monoclonal antibody supplied in PBS with 0.02% sodium azide and 50% glycerol, pH 7.3.
Storage	Shipped on wet ice. Store at -20°C. Stable for 24 months from date of receipt. Aliquoting is unnecessary for -20°C storage.
Precautions	Anti-Phospho-Stathmin 1 (Ser63) Rabbit mAb [31A08S97] is for research use only and not for use in diagnostic or therapeutic procedures.

Protein Information

Synonyms	Stathmin 1 (phospho S63); p-Stathmin 1 (phospho S63); Stathmin 1 (Phospho-Ser63); Stathmin (Phospho Ser63); Stathmin (Phospho S63); Lag; LAP 18; LAP18; Leukemia associated phosphoprotein p18; Metablastin; Oncoprotein 18; OP 18; OP18; p18; p19; Phosphoprotein 19; Phosphoprotein p19; PP17; PP19; PR22; Pr22 protein; ProsoLin; Protein Pr22; SMN; Stathmin; Stathmin1; STMN 1; STMN1; STMN1_HUMAN.
Calculated MW	Calculated MW: 17 kDa; Observed MW: 17 kDa
Uniprot ID	P16949
Gene ID	3925
Background	This gene belongs to the stathmin family of genes. It encodes a ubiquitous cytosolic phosphoprotein proposed to function as an intracellular relay integrating regulatory signals of the cellular environment. The encoded protein is involved in the regulation of the microtubule filament system by destabilizing microtubules. It prevents assembly and promotes disassembly of microtubules. Multiple transcript variants encoding different isoforms have been found for this gene. [provided by RefSeq, Feb 2009]
Cellular Location	Cytoplasm Cytoskeleton
Tissue Location	Ubiquitous. Expression is strongest in fetal and adult brain, spinal cord, and cerebellum, followed by thymus, bone marrow, testis, and fetal liver. Expression is intermediate in colon, ovary, placenta, uterus, and trachea, and is readily detected at substantially lower levels in all other tissues examined. Lowest expression is found in adult liver. Present in much greater abundance in cells from patients with acute leukemia of different subtypes than in normal peripheral blood lymphocytes, non-



Western Blot - Anti-Phospho-Stathmin 1 (Ser63) Rabbit mAb [31A08S97]

All lanes: R016054 at 1:2,000 dilution

Lane 1: THP-1 (Human monocytic leukemia cell) whole cell lysates

Lane 2: Raw264.7 (Mouse mononuclear macrophage leukemia cell) whole cell lysates

Lysates/proteins at 10 μ g per lane.

Secondary antibody: Goat Anti-Rabbit IgG (H+L), HRP Conjugated (Cat. No. LF102) at 1:5,000 dilution

Predicted band size: 17 kDa

Observed band size: 17 kDa

Developed using the ECL technique (Cat. No. SQ201).