

## Anti-AP2B1 Rabbit mAb

Purified Recombinant Rabbit Monoclonal Antibody

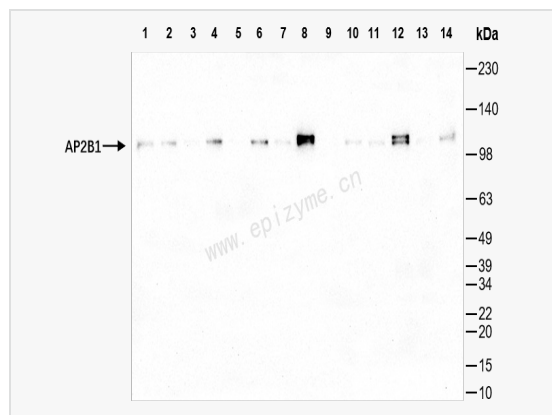
Catalog # R015954

### Product Information

Application	WB, ELISA
Reactivity	Human, Mouse, Rat
Dilution	WB 1:1,000~1:2,000
Host	Rabbit
Clonality	Monoclonal
Clone No.	61L45M14
Isotype	IgG
Label	Unconjugated
Immunogen	A synthesized peptide derived from human AP2B1
Format	Affinity purified monoclonal antibody supplied in PBS with 0.02% sodium azide and 50% glycerol, pH 7.3.
Storage	Shipped on wet ice. Store at -20°C. Stable for 24 months from date of receipt. Aliquoting is unnecessary for -20°C storage.
Precautions	Anti-AP2B1 Rabbit mAb [61L45M14] is for research use only and not for use in diagnostic or therapeutic procedures.

### Protein Information

Synonyms	ADTB2; CLAPB1; AP2B1; AP-2 complex subunit beta; AP105B; Adaptor protein complex AP-2 subunit beta; Adaptor-related protein complex 2 subunit beta; Beta-2-adaptin; Beta-adaptin; Clathrin assembly protein complex 2 beta large chain; Plasma membrane adaptor HA2/AP2 adaptin beta subunit.
Calculated MW	Calculated MW: 105 kDa; Observed MW: 105 kDa
Uniprot ID	P63010
Gene ID	163
Background	The protein encoded by this gene is one of two large chain components of the assembly protein complex 2, which serves to link clathrin to receptors in coated vesicles. The encoded protein is found on the cytoplasmic face of coated vesicles in the plasma membrane. Two transcript variants encoding different isoforms have been found for this gene. [provided by RefSeq, Jul 2008]
Cellular Location	Cell membrane Membrane Coated pit Peripheral membrane protein Cytoplasmic side AP-2 appears to be excluded from internalizing CCVs and to disengage from sites of endocytosis seconds before internalization of the nascent CCV
Tissue Location	Expressed in the brain (at protein level).



Western Blot - Anti-AP2B1 Rabbit mAb [61L45M14]

All lanes: R015954 at 1:1,000 dilution

Lane 1: HeLa (Human cervix adenocarcinoma epithelial cell) whole cell lysates

Lane 2: HepG2 (Human hepatocarcinoma epithelial cell) whole cell lysates

Lane 3: HCT116 (Human colorectal carcinoma epithelial cell) whole cell lysates

Lane 4: 293T (Human embryonic kidney cell) whole cell lysates

Lane 5: K562 (Human chronic myeloid leukemia cell) whole cell lysates

Lane 6: Caco2 (Human colorectal adenocarcinoma epithelial cell) whole cell lysates

Lane 7: U87 (Human malignant glioblastoma epithelial cells) whole cell lysates

Lane 8: Raw264.7 (Mouse mononuclear macrophage leukemia cell) whole cell lysates

Lane 9: Mouse liver whole tissue lysates

Lane 10: Mouse adipose whole tissue lysates

Lane 11: Mouse embryo whole tissue lysates

Lane 12: PC-12 (Rat adrenal pheochromocytoma epithelial cell) whole cell lysates

Lane 13: Rat liver whole tissue lysates

Lane 14: Rat adipose whole tissue lysates

Lysates/proteins at 10 µg per lane.

Secondary antibody: Goat Anti-Rabbit IgG (H+L), HRP Conjugated (Cat. No. LF102) at 1:5,000 dilution

Predicted band size: 105 kDa

Observed band size: 105 kDa

Developed using the ECL technique (Cat. No. SQ201).