

Anti-Phospho-Tau (Ser202) Rabbit mAb

Purified Recombinant Rabbit Monoclonal Antibody

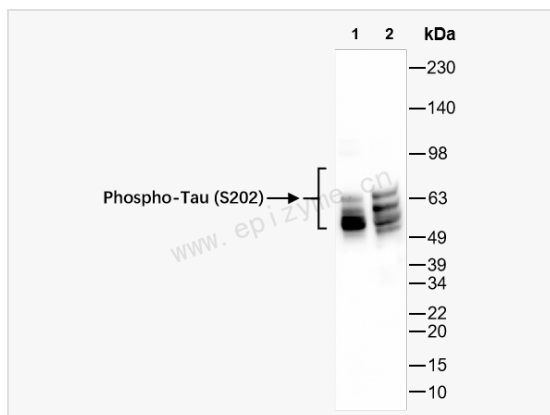
Catalog # R015918

Product Information

Application	WB, ELISA
Reactivity	Mouse, Rat
Dilution	WB 1:1,000~1:2,000
Host	Rabbit
Clonality	Monoclonal
Clone No.	27K33P39
Isotype	IgG
Label	Unconjugated
Immunogen	A synthesized peptide derived from human Phospho-Tau (S202)
Format	Affinity purified monoclonal antibody supplied in PBS with 0.02% sodium azide and 50% glycerol, pH 7.3.
Storage	Shipped on wet ice. Store at -20°C. Stable for 24 months from date of receipt. Aliquoting is unnecessary for -20°C storage.
Precautions	Anti-Phospho-Tau (Ser202) Rabbit mAb [27K33P39] is for research use only and not for use in diagnostic or therapeutic procedures.

Protein Information

Synonyms	MAPTL; MTBT1; TAU; MAPT; Microtubule-associated protein tau; Neurofibrillary tangle protein; Paired helical filament-tau; PHF-tau.
Calculated MW	Calculated MW: 79 kDa; Observed MW: 50-70 kDa
Uniprot ID	P10636
Gene ID	4137
Background	This gene encodes the microtubule-associated protein tau (MAPT) whose transcript undergoes complex, regulated alternative splicing, giving rise to several mRNA species. MAPT transcripts are differentially expressed in the nervous system, depending on stage of neuronal maturation and neuron type. MAPT gene mutations have been associated with several neurodegenerative disorders such as Alzheimer's disease, Pick's disease, frontotemporal dementia, cortico-basal degeneration and progressive supranuclear palsy. [provided by RefSeq, Jul 2008]
Cellular Location	Cytoplasm.Cytosol.Cell membrane.Peripheral membrane protein.Cytoplasmic side.Cytoplasm.Cytoskeleton.Cell projection.Axon.Cell projection.Dendrite.Secreted.Mostly found in the axons of neurons, in the cytosol and in association with plasma membrane components (PubMed:10747907). Can be secreted; the secretion is dependent on protein unfolding and facilitated by the cargo receptor TMED10; it results in protein translocation from the cytoplasm into the ERGIC (endoplasmic reticulum-Golgi intermediate compartment) followed by vesicle entry and secretion (PubMed:32272059).
Tissue Location	Expressed in neurons. Isoform PNS-tau is expressed in the peripheral nervous system while the others are expressed in the



Western Blot - Anti-Phospho-Tau (Ser202) Rabbit mAb [27K33P39]

All lanes: R015918 at 1:1,000 dilution

Lane 1: Mouse brain whole tissue lysates

Lane 2: Rat brain whole tissue lysates

Lysates/proteins at 10 μ g per lane.

Secondary antibody: Goat Anti-Rabbit IgG (H+L), HRP Conjugated (Cat. No. LF102) at 1:5,000 dilution

Predicted band size: 79 kDa

Observed band size: 50-70 kDa

Developed using the ECL technique (Cat. No. SQ201).