

## Anti-PP2A alpha Rabbit pAb

Purified Rabbit Polyclonal Antibody

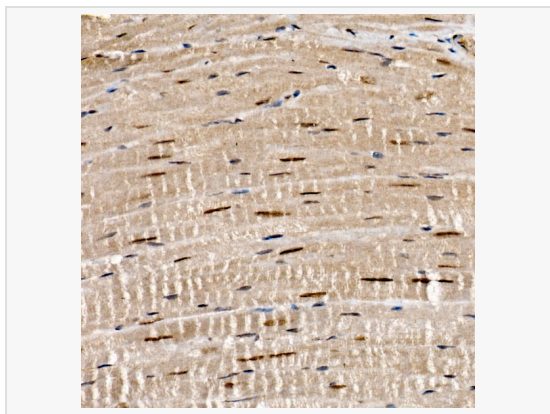
Catalog # P106982

### Product Information

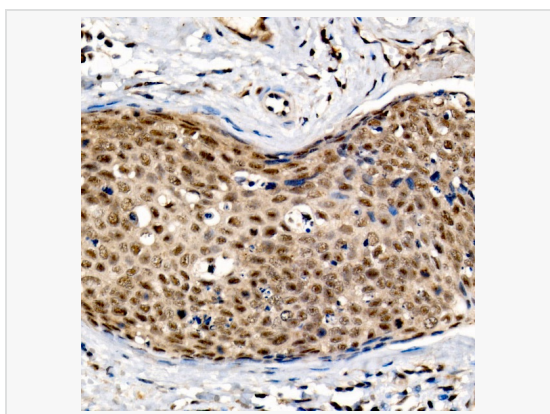
Application	WB, IHC-P/IF (Tissue-P), IF (Cell)/ICC, IP, ELISA
Reactivity	Human, Mouse, Rat
Dilution	WB 1:1,000~1:5,000; IHC-P 1:50~1:200; IF 1:50~1:200; IP 0.5μg-4μg antibody for 200μg-500μg extracts of whole cells
Host	Rabbit
Clonality	Polyclonal
Isotype	IgG
Label	Unconjugated
Immunogen	Recombinant fusion protein containing a sequence corresponding to amino acids 1-309 of human PP2A Catalytic $\alpha$ (NP_002706.1).
Format	Affinity purified polyclonal antibody supplied in PBS with 0.02% sodium azide and 50% glycerol, pH 7.3.
Storage	Shipped on wet ice. Store at -20°C. Stable for 24 months from date of receipt. Aliquoting is unnecessary for -20°C storage.
Precautions	Anti-PP2A alpha Rabbit pAb is for research use only and not for use in diagnostic or therapeutic procedures.

### Protein Information

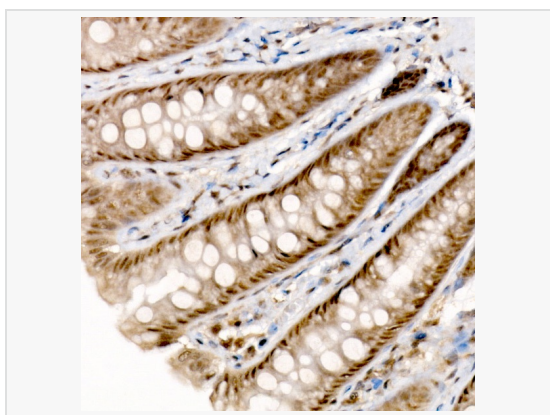
Synonyms	RP-C; PP2Ac; PP2CA; NEDLBA; PP2Calpha; PP2A Catalytic $\alpha$ .
Calculated MW	Calculated MW: 36 kDa; Observed MW: 36 kDa
Uniprot ID	P67775
Gene ID	5515
Background	This gene encodes the phosphatase 2A catalytic subunit. Protein phosphatase 2A is one of the four major Ser/Thr phosphatases, and it is implicated in the negative control of cell growth and division. It consists of a common heteromeric core enzyme, which is composed of a catalytic subunit and a constant regulatory subunit, that associates with a variety of regulatory subunits. This gene encodes an alpha isoform of the catalytic subunit.



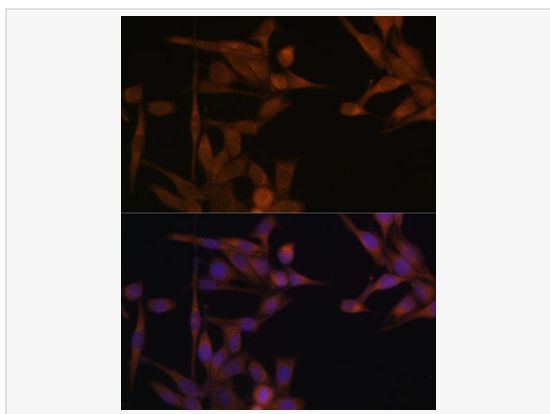
Immunohistochemistry analysis of paraffin-embedded Mouse heart tissue using PP2A Catalytic  $\alpha$  Rabbit pAb (P106982) at a dilution of 1:100 (40 $\times$  lens). High pressure antigen retrieval was performed with 0.01 M citrate buffer (pH 6.0) prior to IHC staining.



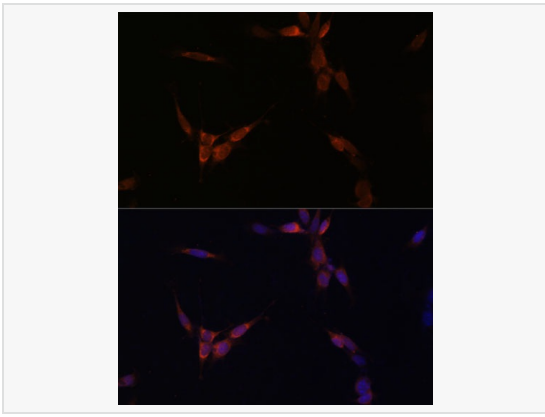
Immunohistochemistry analysis of paraffin-embedded Human cervical cancer tissue using PP2A Catalytic  $\alpha$  Rabbit pAb (P106982) at a dilution of 1:100 (40 $\times$  lens). High pressure antigen retrieval was performed with 0.01 M citrate buffer (pH 6.0) prior to IHC staining.



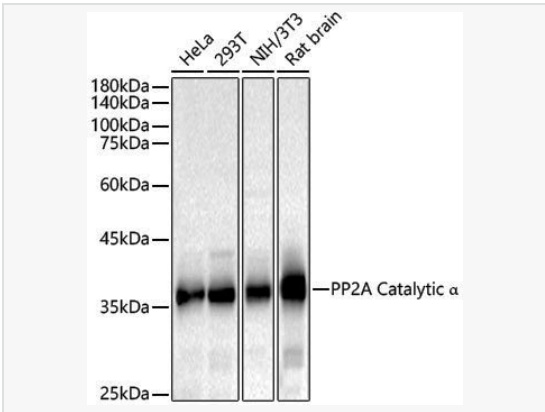
Immunohistochemistry analysis of paraffin-embedded Rat colon tissue using PP2A Catalytic  $\alpha$  Rabbit pAb (P106982) at a dilution of 1:100 (40 $\times$  lens). High pressure antigen retrieval was performed with 0.01 M citrate buffer (pH 6.0) prior to IHC staining.



Immunofluorescence analysis of HeLa cells using PP2A Catalytic  $\alpha$  Rabbit pAb (P106982) at dilution of 1:100. Secondary antibody: Cy3-conjugated Goat anti-Rabbit IgG (H+L) at 1:500 dilution. Blue: DAPI for nuclear staining.



Immunofluorescence analysis of NIH/3T3 cells using PP2A Catalytic  $\alpha$  Rabbit pAb (P106982) at dilution of 1:100. Secondary antibody: Cy3-conjugated Goat anti-Rabbit IgG (H+L) at 1:500 dilution. Blue: DAPI for nuclear staining.



Western blot analysis of various lysates, using PP2A Catalytic  $\alpha$  Rabbit pAb (P106982) at 1:2,000 dilution.

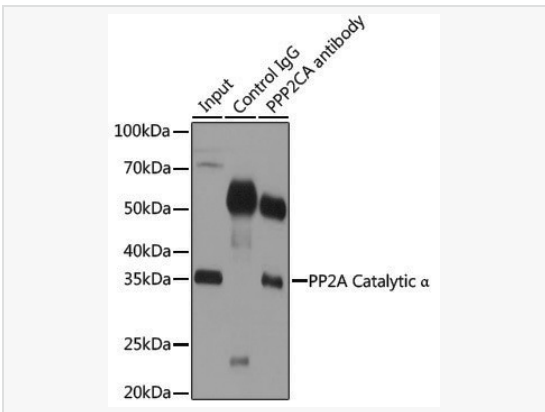
Secondary antibody: HRP-conjugated Goat anti-Rabbit IgG (H+L) (LF102) at 1:10,000 dilution.

Lysates/proteins: 25 $\mu$ g per lane.

Blocking buffer: 3% nonfat dry milk in TBST.

Detection: ECL Kit (SQ201).

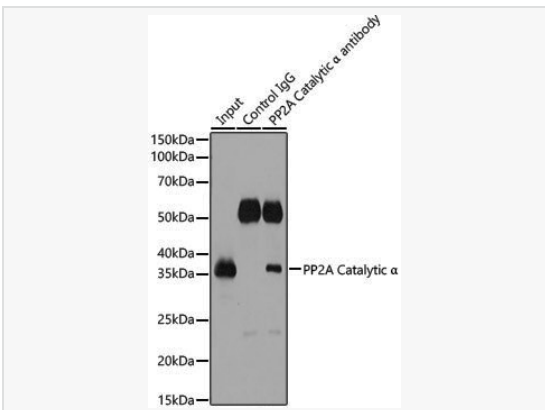
Exposure time: 10s.



Immunoprecipitation analysis of 200  $\mu$ g extracts of 293T cells using 3  $\mu$ g PP2A

Catalytic  $\alpha$  antibody (P106982). Western blot was performed from the

immunoprecipitate using PP2A Catalytic  $\alpha$  antibody (P106982) at a dilution of 1:1000.



Immunoprecipitation analysis of 500  $\mu$ g extracts of Rat brain cells using 3  $\mu$ g PP2A

Catalytic  $\alpha$  antibody (P106982). Western blot was performed from the

immunoprecipitate using PP2A Catalytic  $\alpha$  antibody (P106982) at a dilution of 1:1000.