

# Anti-ADAM9 Rabbit pAb

Purified Rabbit Polyclonal Antibody

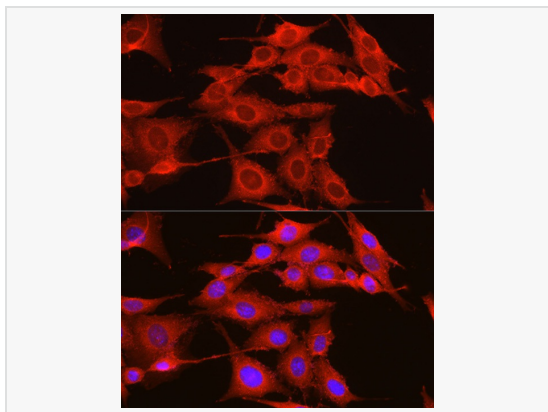
Catalog # P106103

## Product Information

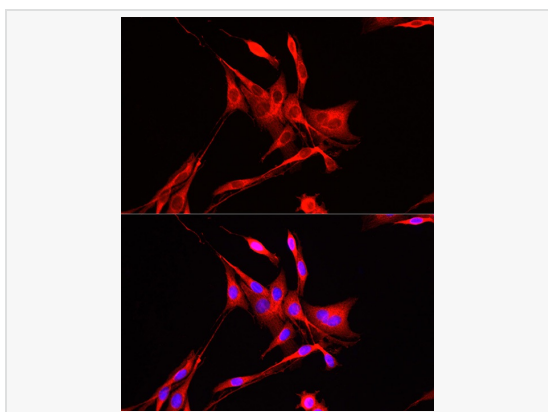
Application	WB, IF (Cell)/ICC, ELISA
Reactivity	Human, Mouse, Rat, MK
Dilution	WB 1:500~1:1,000; IF 1:50~1:200
Host	Rabbit
Clonality	Polyclonal
Isotype	IgG
Label	Unconjugated
Immunogen	Recombinant fusion protein containing a sequence corresponding to amino acids 29-210 of human ADAM9 (NP_003807.1).
Format	Affinity purified polyclonal antibody supplied in PBS with 0.02% sodium azide and 50% glycerol, pH 7.3.
Storage	Shipped on wet ice. Store at -20°C. Stable for 24 months from date of receipt. Aliquoting is unnecessary for -20°C storage.
Precautions	Anti-ADAM9 Rabbit pAb is for research use only and not for use in diagnostic or therapeutic procedures.

## Protein Information

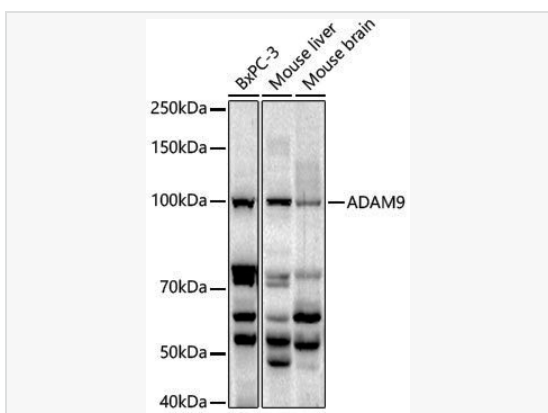
Synonyms	MCMP; MDC9; CORD9; Mltng; ADAM9.
Calculated MW	Calculated MW: 91 kDa; Observed MW: 100 kDa/
Uniprot ID	Q13443
Gene ID	8754
Background	This gene encodes a member of the ADAM (a disintegrin and metalloprotease domain) family. Members of this family are membrane-anchored proteins structurally related to snake venom disintegrins, and have been implicated in a variety of biological processes involving cell-cell and cell-matrix interactions, including fertilization, muscle development, and neurogenesis. The protein encoded by this gene interacts with SH3 domain-containing proteins, binds mitotic arrest deficient 2 beta protein, and is also involved in TPA-induced ectodomain shedding of membrane-anchored heparin-binding EGF-like growth factor. Several alternatively spliced transcript variants have been identified for this gene.



Immunofluorescence analysis of NIH/3T3 cells using ADAM9 Rabbit pAb (P106103) at dilution of 1:50 (40× lens). Secondary antibody: Cy3-conjugated Goat anti-Rabbit IgG (H+L) at 1:500 dilution. Blue: DAPI for nuclear staining.



Immunofluorescence analysis of PC-12 cells using ADAM9 Rabbit pAb (P106103) at dilution of 1:50 (40× lens). Secondary antibody: Cy3-conjugated Goat anti-Rabbit IgG (H+L) at 1:500 dilution. Blue: DAPI for nuclear staining.



Western blot analysis of various lysates using ADAM9 Rabbit pAb (P106103) at 1:1,000 dilution.

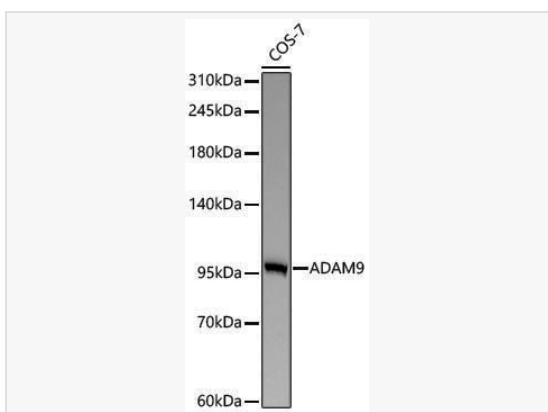
Secondary antibody: HRP-conjugated Goat anti-Rabbit IgG (H+L) (LF102) at 1:10,000 dilution.

Lysates/proteins: 25µg per lane.

Blocking buffer: 3% nonfat dry milk in TBST.

Detection: ECL Kit (SQ201).

Exposure time: 180s.



Western blot analysis of lysates from COS-7 cells using ADAM9 Rabbit pAb (P106103) at 1:1,000 dilution incubated overnight at 4°C.

Secondary antibody: HRP-conjugated Goat anti-Rabbit IgG (H+L) (LF102) at 1:10,000 dilution.

Lysates/proteins: 25 µg per lane.

Blocking buffer: 3% nonfat dry milk in TBST.

Detection: ECL Kit (SQ201).

Exposure time: 20s.