

Anti-CRTC1 Rabbit pAb

Purified Rabbit Polyclonal Antibody

Catalog # P102534

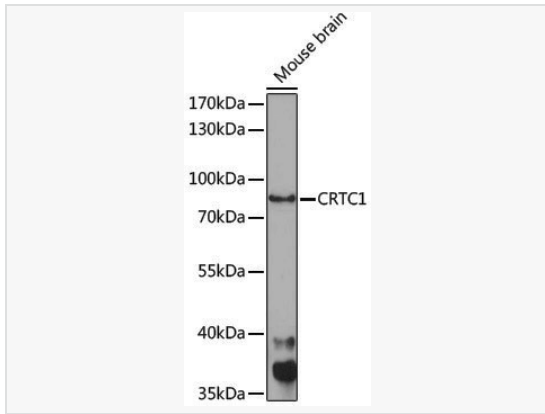
Product Information

Application	WB, ELISA
Reactivity	Mouse, Rat
Dilution	WB 1:200~1:2,000
Host	Rabbit
Clonality	Polyclonal
Isotype	IgG
Label	Unconjugated
Immunogen	Recombinant fusion protein containing a sequence corresponding to amino acids 1-200 of human CRTC1 (NP_056136.2).
Format	Affinity purified polyclonal antibody supplied in PBS with 0.02% sodium azide and 50% glycerol, pH 7.3.
Storage	Shipped on wet ice. Store at -20°C. Stable for 24 months from date of receipt. Aliquoting is unnecessary for -20°C storage.
Precautions	Anti-CRTC1 Rabbit pAb is for research use only and not for use in diagnostic or therapeutic procedures.

Protein Information

Synonyms	MAML2; MECT1; Mam-2; TORC1; TORC-1; WAMTP1; CRTC1.
Calculated MW	Calculated MW: 67 kDa; Observed MW: 80 kDa
Uniprot ID	Q6UUV9
Gene ID	23373
Background	Enables cAMP response element binding protein binding activity. Involved in positive regulation of transcription by RNA polymerase II. Located in cytosol; nuclear body; and plasma membrane.

Validation Images



Western blot analysis of lysates from Mouse brain, using CRTC1 Rabbit pAb (P102534) at 1:1,000 dilution.

Secondary antibody: HRP-conjugated Goat anti-Rabbit IgG (H+L) (LF102) at 1:10,000 dilution.

Lysates/proteins: 25 μ g per lane.

Blocking buffer: 3% nonfat dry milk in TBST.

Detection: ECL Enhanced Kit.

Exposure time: 90s.