

Anti-Calmodulin 1/2/3 Rabbit pAb

Purified Rabbit Polyclonal Antibody

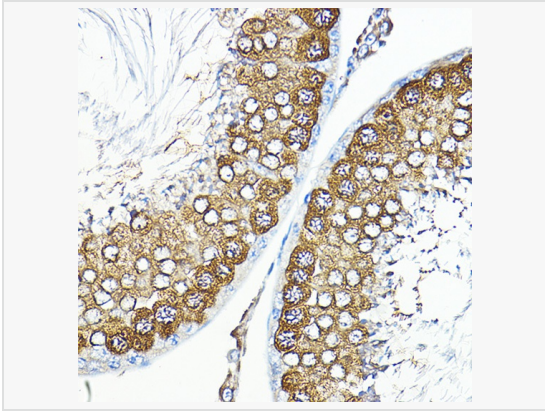
Catalog # P102317

Product Information

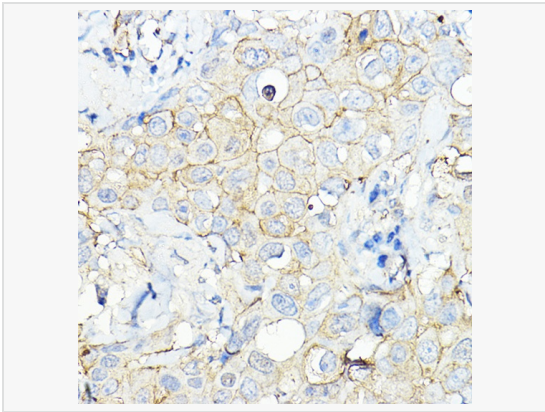
Application	IHC-P/IF (Tissue-P), IF (Cell)/ICC, ELISA
Reactivity	Human, Mouse, Rat
Dilution	IHC-P 1:50~1:200; IF 1:50~1:200
Host	Rabbit
Clonality	Polyclonal
Isotype	IgG
Label	Unconjugated
Immunogen	A synthetic peptide corresponding to a sequence within amino acids 70-149 of human Calmodulin 1/2/3 (NP_008819.1).
Format	Affinity purified polyclonal antibody supplied in PBS with 0.02% sodium azide and 50% glycerol, pH 7.3.
Storage	Shipped on wet ice. Store at -20°C. Stable for 24 months from date of receipt. Aliquoting is unnecessary for -20°C storage.
Precautions	Anti-Calmodulin 1/2/3 Rabbit pAb is for research use only and not for use in diagnostic or therapeutic procedures.

Protein Information

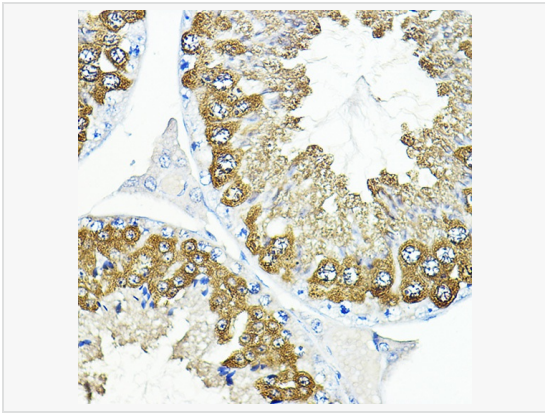
Synonyms	CALM; CALM1; CALM2; CALM3; CALML2; calmodulin 1 (phosphorylase kinase; delta); Calmodulin 1; Calmodulin 2 (phosphorylase kinase; delta); Calmodulin 2; Calmodulin 3 (phosphorylase kinase; delta); Calmodulin 3; CAM 2; CAM 3; CAM; CAM I; CAM1; CAM2; CAM3; CAMB; CAMC; CAMI; CAMII; CAMIII; CPVT4; DD132; FLJ99410; LP7057 protein; PHKD; PHKD2; PHKD3; phosphorylase kinase delta; phosphorylase kinase; delta subunit.
Calculated MW	Calculated MW: 16 kDa; Observed MW: Refer to figures
Uniprot ID	P0DP23, P0DP24, P0DP25
Gene ID	801, 805, 808
Background	This gene encodes a member of the EF-hand calcium-binding protein family. It is one of three genes which encode an identical calcium binding protein which is one of the four subunits of phosphorylase kinase. Two pseudogenes have been identified on chromosome 7 and X. Multiple transcript variants encoding different isoforms have been found for this gene.



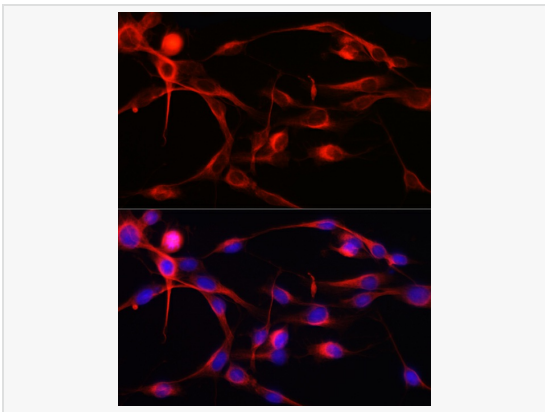
Immunohistochemistry analysis of paraffin-embedded Rat testis using Calmodulin 1/2/3 Rabbit pAb (P102317) at dilution of 1:100 (40× lens). High pressure antigen retrieval performed with 0.01M Citrate Bufferr (pH 6.0) prior to IHC staining.



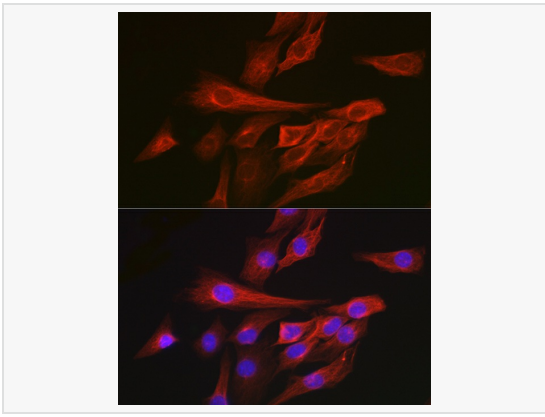
Immunohistochemistry analysis of paraffin-embedded Human breast cancer using Calmodulin 1/2/3 Rabbit pAb (P102317) at dilution of 1:100 (40× lens). High pressure antigen retrieval performed with 0.01M Citrate Bufferr (pH 6.0) prior to IHC staining.



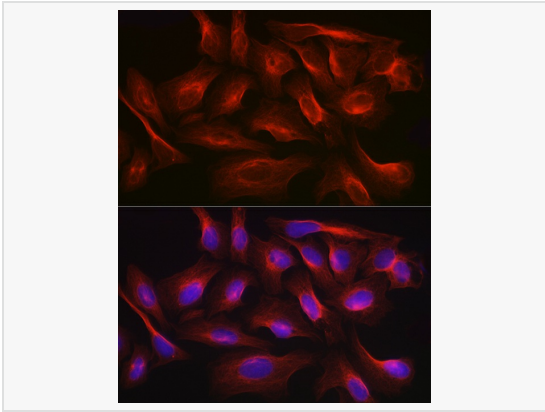
Immunohistochemistry analysis of paraffin-embedded Mouse testis using Calmodulin 1/2/3 Rabbit pAb (P102317) at dilution of 1:100 (40× lens). High pressure antigen retrieval performed with 0.01M Citrate Bufferr (pH 6.0) prior to IHC staining.



Immunofluorescence analysis of C6 cells using Calmodulin 1/2/3 Rabbit pAb (P102317) at dilution of 1:100 (40× lens). Secondary antibody: Cy3-conjugated Goat anti-Rabbit IgG (H+L) at 1:500 dilution. Blue: DAPI for nuclear staining.



Immunofluorescence analysis of NIH/3T3 cells using Calmodulin 1/2/3 Rabbit pAb (P102317) at dilution of 1:100 (40× lens). Secondary antibody: Cy3-conjugated Goat anti-Rabbit IgG (H+L) at 1:500 dilution. Blue: DAPI for nuclear staining.



Immunofluorescence analysis of U2OS cells using Calmodulin 1/2/3 Rabbit pAb (P102317) at dilution of 1:100 (40× lens). Secondary antibody: Cy3-conjugated Goat anti-Rabbit IgG (H+L) at 1:500 dilution. Blue: DAPI for nuclear staining.