

Anti-Fos B Rabbit pAb

Purified Rabbit Polyclonal Antibody

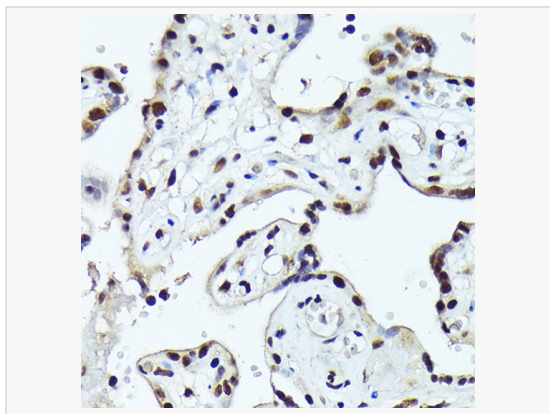
Catalog # P102236

Product Information

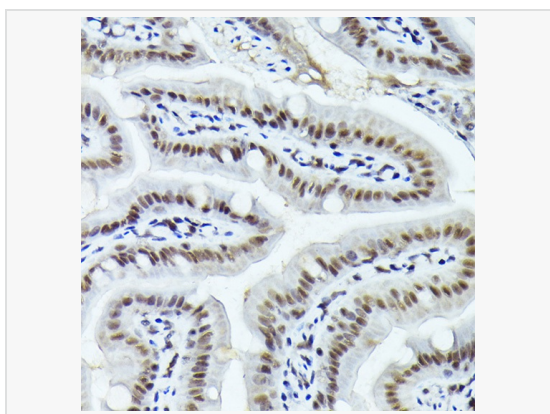
Application	WB, IHC-P/IF (Tissue-P), ELISA
Reactivity	Human, Mouse, Rat
Dilution	WB 1:500~1:1,000; IHC-P 1:50~1:200
Host	Rabbit
Clonality	Polyclonal
Isotype	IgG
Label	Unconjugated
Immunogen	A synthetic peptide corresponding to a sequence within amino acids 1-100 of human FOSB (NP_006723.2).
Format	Affinity purified polyclonal antibody supplied in PBS with 0.02% sodium azide and 50% glycerol, pH 7.3.
Storage	Shipped on wet ice. Store at -20°C. Stable for 24 months from date of receipt. Aliquoting is unnecessary for -20°C storage.
Precautions	Anti-Fos B Rabbit pAb is for research use only and not for use in diagnostic or therapeutic procedures.

Protein Information

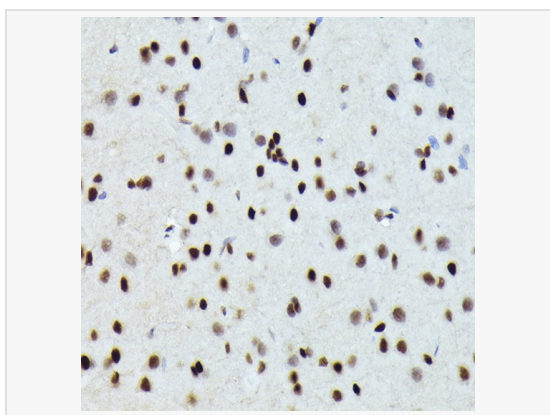
Synonyms	AP-1; G0S3; GOS3; GOSB; FOSB.
Calculated MW	Calculated MW: 36 kDa; Observed MW: 38 kDa/48 kDa
Uniprot ID	P53539
Gene ID	2354
Background	The Fos gene family consists of 4 members: FOS, FOSB, FOSL1, and FOSL2. These genes encode leucine zipper proteins that can dimerize with proteins of the JUN family, thereby forming the transcription factor complex AP-1. As such, the FOS proteins have been implicated as regulators of cell proliferation, differentiation, and transformation. Alternatively spliced transcript variants encoding different isoforms have been found for this gene.



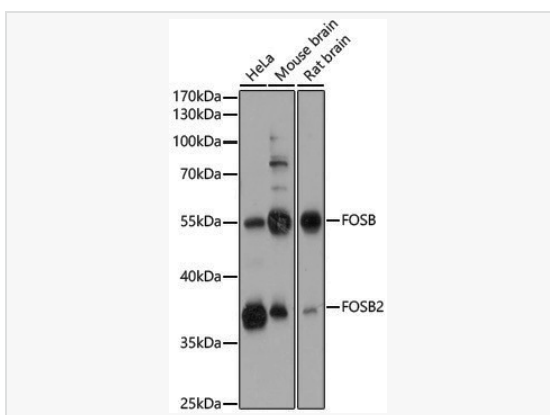
Immunohistochemistry analysis of paraffin-embedded Human placenta using FOSB Rabbit pAb (P102236) at dilution of 1:100 (40× lens). High pressure antigen retrieval performed with 0.01M Citrate Bufferr (pH 6.0) prior to IHC staining.



Immunohistochemistry analysis of paraffin-embedded Mouse stomach using FOSB Rabbit pAb (P102236) at dilution of 1:100 (40× lens). High pressure antigen retrieval performed with 0.01M Citrate Bufferr (pH 6.0) prior to IHC staining.



Immunohistochemistry analysis of paraffin-embedded Rat brain using FOSB Rabbit pAb (P102236) at dilution of 1:100 (40× lens). High pressure antigen retrieval performed with 0.01M Citrate Bufferr (pH 6.0) prior to IHC staining.



Western blot analysis of various lysates using FOSB Rabbit pAb (P102236) at 1:1,000 dilution.

Secondary antibody: HRP-conjugated Goat anti-Rabbit IgG (H+L) (LF102) at 1:10,000 dilution.

Lysates/proteins: 25µg per lane.

Blocking buffer: 3% nonfat dry milk in TBST.

Detection: ECL Kit.

Exposure time: 5s.