

# Anti-Calmodulin 1/2/3 Rabbit pAb

Purified Rabbit Polyclonal Antibody

Catalog # P100937

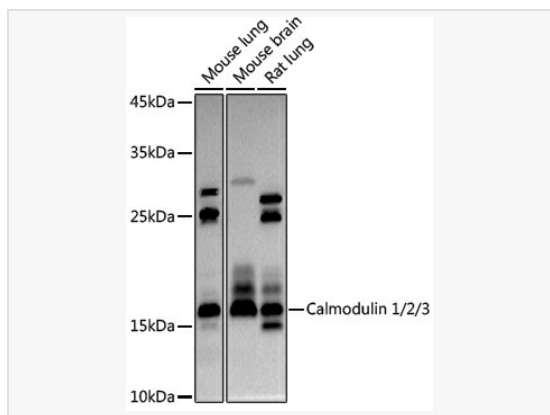
## Product Information

Application	WB, ELISA
Reactivity	Human, Mouse, Rat
Dilution	WB 1:500~1:1,000
Host	Rabbit
Clonality	Polyclonal
Isotype	IgG
Label	Unconjugated
Immunogen	A synthetic peptide corresponding to a sequence within amino acids 70-149 of human Calmodulin 1/2/3 (NP_008819.1).
Format	Affinity purified polyclonal antibody supplied in PBS with 0.02% sodium azide and 50% glycerol, pH 7.3.
Storage	Shipped on wet ice. Store at -20°C. Stable for 24 months from date of receipt. Aliquoting is unnecessary for -20°C storage.
Precautions	Anti-Calmodulin 1/2/3 Rabbit pAb is for research use only and not for use in diagnostic or therapeutic procedures.

## Protein Information

Synonyms	CALM; CALM1; CALM2; CALM3; CALML2; calmodulin 1 (phosphorylase kinase; delta); Calmodulin 1; Calmodulin 2 (phosphorylase kinase; delta); Calmodulin 2; Calmodulin 3 (phosphorylase kinase; delta); Calmodulin 3; CAM 2; CAM 3; CAM; CAM I; CAM1; CAM2; CAM3; CAMB; CAMC; CAMI; CAMII; CAMIII; CPVT4; DD132; FLJ99410; LP7057 protein; PHKD; PHKD2; PHKD3; phosphorylase kinase delta; phosphorylase kinase; delta subunit.
Calculated MW	Calculated MW: 16 kDa; Observed MW: 17 kDa
Uniprot ID	P0DP23, P0DP24, P0DP25
Gene ID	801, 805, 808
Background	This gene encodes a member of the EF-hand calcium-binding protein family. It is one of three genes which encode an identical calcium binding protein which is one of the four subunits of phosphorylase kinase. Two pseudogenes have been identified on chromosome 7 and X. Multiple transcript variants encoding different isoforms have been found for this gene.

## Validation Images



Western blot analysis of various lysates using Calmodulin 1/2/3 Rabbit pAb (P100937) at 1:1,000 dilution.

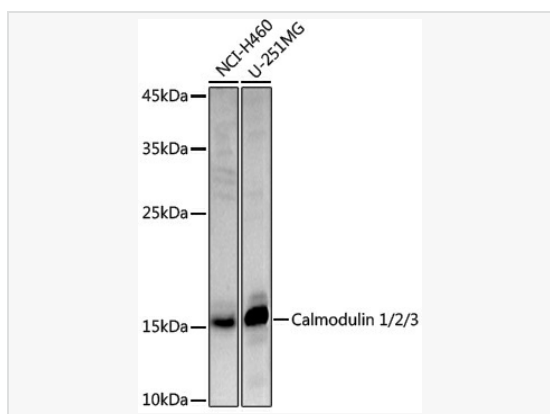
Secondary antibody: HRP-conjugated Goat anti-Rabbit IgG (H+L) (LF102) at 1:10,000 dilution.

Lysates/proteins: 25µg per lane.

Blocking buffer: 3% nonfat dry milk in TBST.

Detection: ECL Kit.

Exposure time: 30s.



Western blot analysis of various lysates using Calmodulin 1/2/3 Rabbit pAb (P100937) at 1:1,000 dilution.

Secondary antibody: HRP-conjugated Goat anti-Rabbit IgG (H+L) (LF102) at 1:10,000 dilution.

Lysates/proteins: 25µg per lane.

Blocking buffer: 3% nonfat dry milk in TBST.

Detection: ECL Kit.

Exposure time: 180s.